



SZABO SCANDIC

Part of Europa Biosite

Produktinformation



Forschungsprodukte & Biochemikalien



Zellkultur & Verbrauchsmaterial



Diagnostik & molekulare Diagnostik



Laborgeräte & Service

Weitere Information auf den folgenden Seiten!
See the following pages for more information!



Lieferung & Zahlungsart

siehe unsere [Liefer- und Versandbedingungen](#)

Zuschläge

- Mindermengenzuschlag
- Trockeneiszuschlag
- Gefahrgutzuschlag
- Expressversand

SZABO-SCANDIC HandelsgmbH

Quellenstraße 110, A-1100 Wien

T. +43(0)1 489 3961-0

F. +43(0)1 489 3961-7

mail@szabo-scandic.com

www.szabo-scandic.com

[linkedin.com/company/szaboscandic](https://www.linkedin.com/company/szaboscandic) 



KLRG1 purified MaxPab rabbit polyclonal antibody (D01P) MaxPab®

Catalog # : H00010219-D01P

規格 : [100 ug]

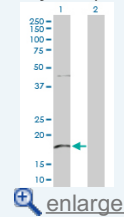
[List All](#)

Specification

Product Description:	Rabbit polyclonal antibody raised against a full-length human KLRG1 protein.
Immunogen:	KLRG1 (NP_005801.3, 1 a.a. ~ 189 a.a) full-length human protein.
Sequence:	MTDSVIYSMLELPTATQAQNDYGPQQKSSSSRPSCSCLVAIALGLLTAVL LSVLLYQWILCQGSNYSTCASCPCPDRWMKYGNHCYYFSVEEKDWNS SLEFCLARDSHLLVITDNQEMSLQVFLSEAFCWIGLRNNSGWRWEDGS PLNFSRISSNSFVQTCGAINKNGLQASSCEVPLHWVCKKVRL
Host:	Rabbit
Reactivity:	Human
Quality Control Testing:	Antibody reactive against mammalian transfected lysate.
Storage Buffer:	In 1x PBS, pH 7.4
Storage Instruction:	Store at -20°C or lower. Aliquot to avoid repeated freezing and thawing.
MSDS:	 Download
Datasheet:	 Download

Application Image

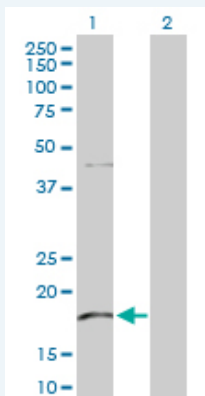
Western Blot (Transfected lysate)



 [enlarge](#)

Applications

Western Blot (Transfected lysate)



Western Blot analysis of KLRG1 expression in transfected 293T cell line ([H00010219-T02](#)) by KLRG1 MaxPab polyclonal antibody.

Lane 1: KLRG1 transfected lysate(21.20 kDa).
Lane 2: Non-transfected lysate.

 [Protocol Download](#)

Gene Information

Entrez GeneID: [10219](#)

**GeneBank
Accession#:** [NM_005810](#)

**Protein
Accession#:** [NP_005801.3](#)

Gene Name: KLRG1

Gene Alias: 2F1,CLEC15A,MAFA,MAFA-2F1,MAFA-L,MAFA-LIKE,MGC13600

**Gene
Description:** killer cell lectin-like receptor subfamily G, member 1

Omim ID: [604874](#)

Gene Ontology: [Hyperlink](#)

Gene Summary: Natural killer (NK) cells are lymphocytes that can mediate lysis of certain tumor cells and virus-infected cells without previous activation. They can also regulate specific humoral and cell-mediated immunity. The protein encoded by this gene belongs to the killer cell lectin-like receptor (KLR) family, which is a group of transmembrane proteins preferentially expressed in NK cells. Studies in mice suggested that the expression of this gene may be regulated by MHC class I molecules. Alternatively spliced transcript variants have been reported, but their full-length natures have not yet been determined. [provided by RefSeq]

**Other
Designations:** C-type lectin domain family 15, member A,mast cell function-associated antigen (ITIM-containing)

Related Disease

[Tobacco Use Disorder](#)