



SZABO SCANDIC

Part of Europa Biosite

Produktinformation



Forschungsprodukte & Biochemikalien



Zellkultur & Verbrauchsmaterial



Diagnostik & molekulare Diagnostik



Laborgeräte & Service

Weitere Information auf den folgenden Seiten!
See the following pages for more information!



Lieferung & Zahlungsart

siehe unsere [Liefer- und Versandbedingungen](#)

Zuschläge

- Mindermengenzuschlag
- Trockeneiszuschlag
- Gefahrgutzuschlag
- Expressversand

SZABO-SCANDIC HandelsgmbH

Quellenstraße 110, A-1100 Wien

T. +43(0)1 489 3961-0

F. +43(0)1 489 3961-7

mail@szabo-scandic.com

www.szabo-scandic.com

[linkedin.com/company/szaboscandic](https://www.linkedin.com/company/szaboscandic) 

KLRG1 293T Cell Transient Overexpression Lysate(Denatured)

Catalog # : H00010219-T01

規格 : [100 uL]

List All

Specification

Transfected Cell Line: 293T

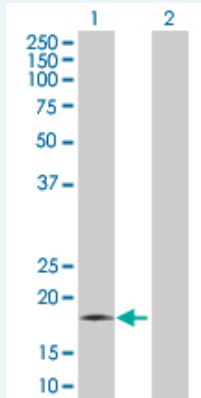
Plasmid: pCMV-KLRG1 full-length

Host: Human

Theoretical MW (kDa): 20.9

Quality Control Testing: Transient overexpression cell lysate was tested with Anti-KLRG1 antibody ([H00010219-B01](#)) by Western Blots.

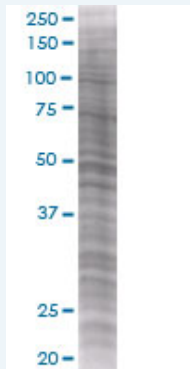
Western Blot



Lane 1: KLRG1 transfected lysate (21.2 KDa)

Lane 2: Non-transfected lysate.

SDS-PAGE Gel



KLRG1 transfected lysate.

Storage Buffer: 1X Sample Buffer (50 mM Tris-HCl, 2% SDS, 10% glycerol, 300 mM 2-mercaptoethanol, 0.01% Bromophenol blue)

Storage Instruction: Store at -80°C. Aliquot to avoid repeated freezing and thawing.

MSDS:  [Download](#)

Applications

Application Image

Western Blot

Western Blot

Gene Information

Entrez GeneID: [10219](#)

GeneBank Accession#: [NM_005810](#)

Protein Accession#: [NP_005801](#)

Gene Name: KLRG1

Gene Alias: 2F1,CLEC15A,MAFA,MAFA-2F1,MAFA-L,MAFA-LIKE,MGC13600

Gene Description: killer cell lectin-like receptor subfamily G, member 1

Omim ID: [604874](#)

Gene Ontology: [Hyperlink](#)

Gene Summary: Natural killer (NK) cells are lymphocytes that can mediate lysis of certain tumor cells and virus-infected cells without previous activation. They can also regulate specific humoral and cell-mediated immunity. The protein encoded by this gene belongs to the killer cell lectin-like receptor (KLR) family, which is a group of transmembrane proteins preferentially expressed in NK cells. Studies in mice suggested that the expression of this gene may be regulated by MHC class I molecules. Alternatively spliced transcript variants have been reported, but their full-length natures have not yet been determined. [provided by RefSeq]

Other Designations: C-type lectin domain family 15, member A,mast cell function-associated antigen (ITIM-containing)

Related Disease

[Tobacco Use Disorder](#)

[服務條款](#) | [隱私權政策](#) | [著作及商標](#) | [網站地圖](#)

©2016 亞諾法生技股份有限公司 Abnova Corporation. 版權所有.