



# SZABO SCANDIC

Part of Europa Biosite

## Produktinformation



Forschungsprodukte & Biochemikalien



Zellkultur & Verbrauchsmaterial



Diagnostik & molekulare Diagnostik



Laborgeräte & Service

Weitere Information auf den folgenden Seiten!  
See the following pages for more information!



### Lieferung & Zahlungsart

siehe unsere [Liefer- und Versandbedingungen](#)

### Zuschläge

- Mindermengenzuschlag
- Trockeneiszuschlag
- Gefahrgutzuschlag
- Expressversand

### SZABO-SCANDIC HandelsgmbH

Quellenstraße 110, A-1100 Wien

T. +43(0)1 489 3961-0

F. +43(0)1 489 3961-7

[mail@szabo-scandic.com](mailto:mail@szabo-scandic.com)

[www.szabo-scandic.com](http://www.szabo-scandic.com)

[linkedin.com/company/szaboscandic](https://www.linkedin.com/company/szaboscandic) 

## KLRG1 293T Cell Transient Overexpression Lysate(Denatured)

Catalog # : H00010219-T02

規格 : [ 100 uL ]

[List All](#)

### Specification

**Transfected Cell Line:** 293T

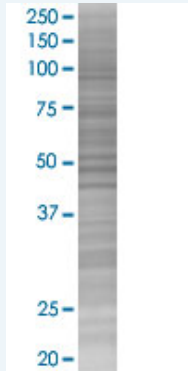
**Plasmid:** pCMV-KLRG1 full-length

**Host:** Human

**Theoretical MW (kDa):** 21.2

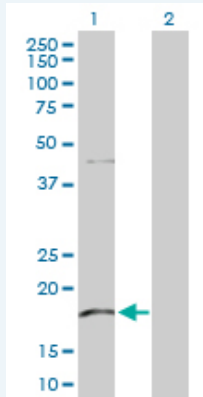
**Quality Control Testing:** Transient overexpression cell lysate was tested with Anti-KLRG1 antibody ([H00010219-D01P](#)) by Western Blots.

#### SDS-PAGE Gel



KLRG1 transfected lysate.

#### Western Blot



Lane 1: KLRG1 transfected lysate ( 21.20 KDa)

Lane 2: Non-transfected lysate.

**Storage Buffer:** 1X Sample Buffer (50 mM Tris-HCl, 2% SDS, 10% glycerol, 300 mM 2-mercaptoethanol, 0.01% Bromophenol blue)

**Storage Instruction:** Store at -80°C. Aliquot to avoid repeated freezing and thawing.

**MSDS:**  [Download](#)

### Applications

### Application Image

Western Blot

## Western Blot

### Gene Information

Entrez GeneID: [10219](#)

GeneBank Accession#: [NM\\_005810](#)

Protein Accession#: [NP\\_005801.3](#)

Gene Name: KLRG1

Gene Alias: 2F1,CLEC15A,MAFA,MAFA-2F1,MAFA-L,MAFA-LIKE,MGC13600

Gene Description: killer cell lectin-like receptor subfamily G, member 1

Omim ID: [604874](#)

Gene Ontology: [Hyperlink](#)

**Gene Summary:** Natural killer (NK) cells are lymphocytes that can mediate lysis of certain tumor cells and virus-infected cells without previous activation. They can also regulate specific humoral and cell-mediated immunity. The protein encoded by this gene belongs to the killer cell lectin-like receptor (KLR) family, which is a group of transmembrane proteins preferentially expressed in NK cells. Studies in mice suggested that the expression of this gene may be regulated by MHC class I molecules. Alternatively spliced transcript variants have been reported, but their full-length natures have not yet been determined. [provided by RefSeq]

**Other Designations:** C-type lectin domain family 15, member A,mast cell function-associated antigen (ITIM-containing)

### Related Disease

[Tobacco Use Disorder](#)

[服務條款](#) | [隱私權政策](#) | [著作及商標](#) | [網站地圖](#)

©2016 亞諾法生技股份有限公司 Abnova Corporation. 版權所有.