



SZABO SCANDIC

Part of Europa Biosite

Produktinformation



Forschungsprodukte & Biochemikalien



Zellkultur & Verbrauchsmaterial



Diagnostik & molekulare Diagnostik



Laborgeräte & Service

Weitere Information auf den folgenden Seiten!
See the following pages for more information!



Lieferung & Zahlungsart

siehe unsere [Liefer- und Versandbedingungen](#)

Zuschläge

- Mindermengenzuschlag
- Trockeneiszuschlag
- Gefahrgutzuschlag
- Expressversand

SZABO-SCANDIC HandelsgmbH

Quellenstraße 110, A-1100 Wien

T. +43(0)1 489 3961-0

F. +43(0)1 489 3961-7

mail@szabo-scandic.com

www.szabo-scandic.com

[linkedin.com/company/szaboscandic](https://www.linkedin.com/company/szaboscandic) 



GDF11 monoclonal antibody (M01), clone 3G6

Catalog # : H00010220-M01

規格 : [100 ug]

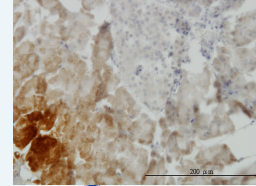
[List All](#)


Specification

Product Description:	Mouse monoclonal antibody raised against a partial recombinant GDF11.
Immunogen:	GDF11 (NP_005802, 310 a.a. ~ 407 a.a) partial recombinant protein with GST tag. MW of the GST tag alone is 26 KDa.
Sequence:	ESRCCRYPLTVDFEAFGWDWIAPKRYKANYCSGQCEYMFMMQKYPHTH LVQQANPRGSAGPCCTPTKMSPINMLYFNDKQQIYGKIPGMVVDRCGC S
Host:	Mouse
Reactivity:	Human
Isotype:	IgG2b Kappa
Quality Control Testing:	Antibody Reactive Against Recombinant Protein.
Storage Buffer:	In 1x PBS, pH 7.4
Storage Instruction:	Store at -20°C or lower. Aliquot to avoid repeated freezing and thawing.
MSDS:	 Download
Datasheet:	 Download

Application Image

Immunohistochemistry
(Formalin/PFA-fixed paraffin-
embedded sections)

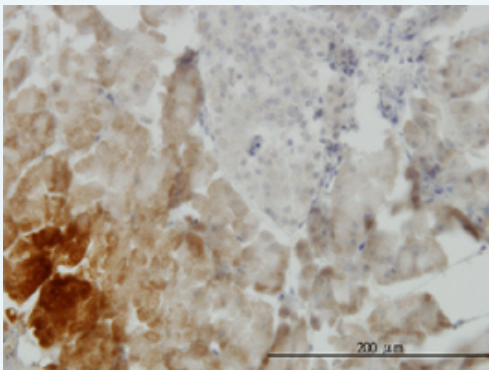


 [enlarge](#)

Sandwich ELISA (Recombinant
protein)
ELISA


Applications

Immunohistochemistry (Formalin/PFA-fixed paraffin-embedded sections)



 [enlarge this image](#)

Immunoperoxidase of monoclonal antibody to GDF11 on formalin-fixed paraffin-embedded human pancreas. [antibody concentration 3 ug/ml]

 [Protocol Download](#)

Sandwich ELISA (Recombinant protein)

Detection limit for recombinant GST tagged GDF11 is approximately 10ng/ml as a capture antibody.

 [Protocol Download](#)

ELISA

Gene Information

Entrez GeneID: [10220](#)

GeneBank Accession#: [NM_005811](#)

Protein Accession#: [NP_005802](#)

Gene Name: GDF11

Gene Alias: BMP-11,BMP11

Gene Description: growth differentiation factor 11

Omim ID: [603936](#)

Gene Ontology: [Hyperlink](#)

Gene Summary: The protein encoded by this gene is a member of the bone morphogenetic protein (BMP) family and the TGF-beta superfamily. This group of proteins is characterized by a polybasic proteolytic processing site which is cleaved to produce a mature protein containing seven conserved cysteine residues. The members of this family are regulators of cell growth and differentiation in both embryonic and adult tissues. Studies in mice and *Xenopus* suggest that this protein is involved in mesodermal formation and neurogenesis during embryonic development. [provided by RefSeq]

Other Designations: bone morphogenetic protein 11

Related Disease

[Genetic Predisposition to Disease Obesity Ovarian Failure, Premature Polycystic Ovary Syndrome Puberty, Delayed Puberty, Precocious Thrombophilia Tobacco Use Disorder](#)