



SZABO SCANDIC

Part of Europa Biosite

Produktinformation



Forschungsprodukte & Biochemikalien



Zellkultur & Verbrauchsmaterial



Diagnostik & molekulare Diagnostik



Laborgeräte & Service

Weitere Information auf den folgenden Seiten!
See the following pages for more information!



Lieferung & Zahlungsart

siehe unsere [Liefer- und Versandbedingungen](#)

Zuschläge

- Mindermengenzuschlag
- Trockeneiszuschlag
- Gefahrgutzuschlag
- Expressversand

SZABO-SCANDIC HandelsgmbH

Quellenstraße 110, A-1100 Wien

T. +43(0)1 489 3961-0

F. +43(0)1 489 3961-7

mail@szabo-scandic.com

www.szabo-scandic.com

[linkedin.com/company/szaboscandic](https://www.linkedin.com/company/szaboscandic) 

TRIB1 monoclonal antibody (M01), clone 4A10

Catalog # : H00010221-M01

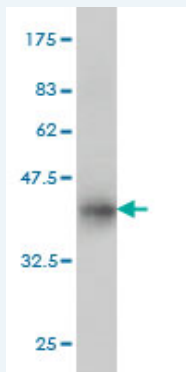
規格 : [100 ug]

[List All](#)

Specification

Product Description:	Mouse monoclonal antibody raised against a partial recombinant TRIB1.
Immunogen:	TRIB1 (NP_079471, 91 a.a. ~ 191 a.a) partial recombinant protein with GST tag. MW of the GST tag alone is 26 KDa.
Sequence:	IADYLLLPLAEREHVSRALCIHTGRELRCKVFPKHYQDKIRPYIQLPSHSNI TGIVEVILGETKAYVFFEKDFGDMHSYVRSRKRRLREEEAARLFKQIVS
Host:	Mouse
Reactivity:	Human
Isotype:	IgG1 Kappa

Quality Control Testing: Antibody Reactive Against Recombinant Protein.



Western Blot detection against Immunogen (36.85 KDa) .

Storage Buffer: In 1x PBS, pH 7.4

Storage Instruction: Store at -20°C or lower. Aliquot to avoid repeated freezing and thawing.

MSDS: [Download](#)

Datasheet: [Download](#)

Publication Reference

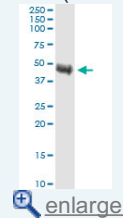
1. [Expulsion of micronuclei containing amplified genes contributes to a decrease in double minute chromosomes from malignant tumor cells.](#)
Ji W, Bian Z, Yu Y, Yuan C, Liu Y, Yu L, Li C, Zhu J, Jia X, Guan R, Zhang C, Meng X, Jin Y, Bai J, Yu J, Lee KY, Sun W, Fu S. *Int. J. Cancer*. doi: 10.1002/ijc.28467

Applications

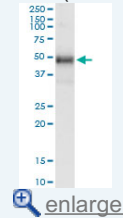
Western Blot (Tissue lysate)

Application Image

Western Blot (Tissue lysate)

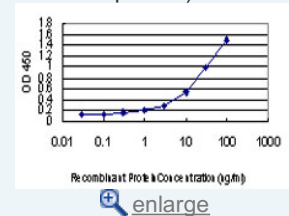


Western Blot (Tissue lysate)

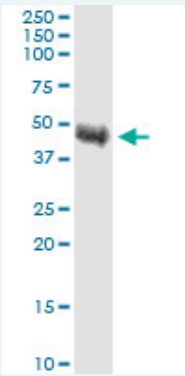


Western Blot (Recombinant protein)

Sandwich ELISA (Recombinant protein)



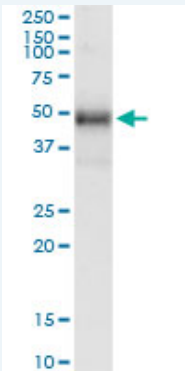
ELISA



TRIB1 monoclonal antibody (M01), clone 4A10. Western Blot analysis of TRIB1 expression in human colon.

[Protocol Download](#)

Western Blot (Tissue lysate)



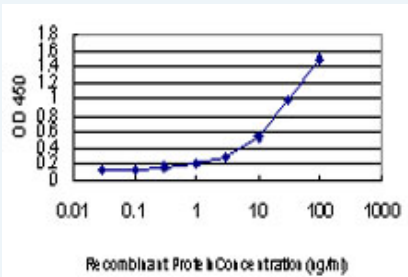
TRIB1 monoclonal antibody (M01), clone 4A10. Western Blot analysis of TRIB1 expression in human stomach.

[Protocol Download](#)

Western Blot (Recombinant protein)

[Protocol Download](#)

Sandwich ELISA (Recombinant protein)



Detection limit for recombinant GST tagged TRIB1 is approximately 0.1ng/ml as a capture antibody.

[Protocol Download](#)

ELISA

Gene Information

Entrez GeneID: [10221](#)

GeneBank [NM_025195](#)
Accession#:

Protein [NP_079471](#)
Accession#:

Gene Name: TRIB1

Gene Alias: C8FW,GIG2,SKIP1

Gene tribbles homolog 1 (Drosophila)

Description:

Gene Ontology: [Hyperlink](#)

Other Designations: G-protein-coupled receptor induced protein, phosphoprotein regulated by mitogenic pathways

Related Disease

[Cardiovascular Diseases](#) [Coronary Artery Disease](#) [Crohn Disease](#)
[Diabetes Mellitus, Type 2](#) [Dyslipidemias](#) [Genetic Predisposition to Disease](#)
[Hyperlipoproteinemias](#) [Hypertriglyceridemia](#) [Inflammatory Bowel Diseases](#)
[Lipid Metabolism Disorders](#) [Obesity](#)

[服務條款](#) | [隱私權政策](#) | [著作及商標](#) | [網站地圖](#)

©2016 亞諾法生技股份有限公司 Abnova Corporation. 版權所有.