



SZABO SCANDIC

Part of Europa Biosite

Produktinformation



Forschungsprodukte & Biochemikalien



Zellkultur & Verbrauchsmaterial



Diagnostik & molekulare Diagnostik



Laborgeräte & Service

Weitere Information auf den folgenden Seiten!
See the following pages for more information!



Lieferung & Zahlungsart

siehe unsere [Liefer- und Versandbedingungen](#)

Zuschläge

- Mindermengenzuschlag
- Trockeneiszuschlag
- Gefahrgutzuschlag
- Expressversand

SZABO-SCANDIC HandelsgmbH

Quellenstraße 110, A-1100 Wien

T. +43(0)1 489 3961-0

F. +43(0)1 489 3961-7

mail@szabo-scandic.com

www.szabo-scandic.com

[linkedin.com/company/szaboscandic](https://www.linkedin.com/company/szaboscandic) 

TRIB1 monoclonal antibody (M02), clone 6E5

Catalog # : H00010221-M02

規格 : [100 ug]

List All

Specification

Product Description: Mouse monoclonal antibody raised against a partial recombinant TRIB1.

Immunogen: TRIB1 (NP_079471, 91 a.a. ~ 191 a.a) partial recombinant protein with GST tag. MW of the GST tag alone is 26 KDa.

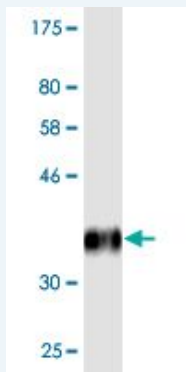
Sequence: IADYLLLPLAEREHVSRALCIHTGRELRCKVFPKHYQDKIRPYIQLPSHSNITGIVEVILGETKAYVFFEKDFGDMHSYVRSRKRLREEEAARLFKQIVS

Host: Mouse

Reactivity: Human

Isotype: IgG1 Kappa

Quality Control Testing: Antibody Reactive Against Recombinant Protein.



Western Blot detection against Immunogen (36.85 KDa) .

Storage Buffer: In 1x PBS, pH 7.4

Storage Instruction: Store at -20°C or lower. Aliquot to avoid repeated freezing and thawing.

MSDS: [Download](#)

Datasheet: [Download](#)

Applications

Western Blot (Recombinant protein)

[Protocol Download](#)

ELISA

Gene Information

Entrez GeneID: [10221](#)

GeneBank [NM_025195](#)

Application Image

Western Blot (Recombinant protein)

ELISA

Accession#:

Protein [NP_079471](#)

Accession#:

Gene Name: TRIB1

Gene Alias: C8FW,GIG2,SKIP1

Gene tribbles homolog 1 (Drosophila)

Description:

Gene Ontology: [Hyperlink](#)

Other Designations: G-protein-coupled receptor induced protein,phosphoprotein regulated by mitogenic pathways

Related Disease

[Cardiovascular Diseases](#) [Coronary Artery Disease](#) [Crohn Disease](#)
[Diabetes Mellitus, Type 2](#) [Dyslipidemias](#) [Genetic Predisposition to Disease](#)
[Hyperlipoproteinemias](#) [Hypertriglyceridemia](#) [Inflammatory Bowel Diseases](#)
[Lipid Metabolism Disorders](#) [Obesity](#)

[服務條款](#) | [隱私權政策](#) | [著作及商標](#) | [網站地圖](#)

©2016 亞諾法生技股份有限公司 Abnova Corporation. 版權所有.