



SZABO SCANDIC

Part of Europa Biosite

Produktinformation



Forschungsprodukte & Biochemikalien



Zellkultur & Verbrauchsmaterial



Diagnostik & molekulare Diagnostik



Laborgeräte & Service

Weitere Information auf den folgenden Seiten!
See the following pages for more information!



Lieferung & Zahlungsart

siehe unsere [Liefer- und Versandbedingungen](#)

Zuschläge

- Mindermengenzuschlag
- Trockeneiszuschlag
- Gefahrgutzuschlag
- Expressversand

SZABO-SCANDIC HandelsgmbH

Quellenstraße 110, A-1100 Wien

T. +43(0)1 489 3961-0

F. +43(0)1 489 3961-7

mail@szabo-scandic.com

www.szabo-scandic.com

[linkedin.com/company/szaboscandic](https://www.linkedin.com/company/szaboscandic) 

PLIN3 MaxPab mouse polyclonal antibody (B01) MaxPab®

Catalog # : H00010226-B01

規格 : [50 uL]

[List All](#)

Specification

Product Description: Mouse polyclonal antibody raised against a full-length human PLIN3 protein.

Immunogen: PLIN3 (NP_005808.2, 1 a.a. ~ 434 a.a) full-length human protein.

Sequence:
 MSADGAEADGSTQVTVEEPVQQPSVVDVAVSMPLISSTCDMVSAAYAS
 TKESYPHIKTVCDAAEKGVRTL TAAAVSGAQPILSKLEPQIASASEYAHRG
 LDKLEENLPILQQPTEKVLADTKELVSSKVSQAQEMVSSAKDTVATQLSE
 AVDATRGAVQSGVDKTKSVVTGGVQSVMGSRLGQMVLSGVDTVLGKS
 EEWADNHLPLTDAELARIATSLDGFVASVQQQRQEYSYFVRLGSLSE
 RLRQHAYEHSLGKLRATKQRAQEALLQLSQALSLMETVKQGVDQKLVE
 GQEKLHQMWLSWNQKQLQGPEKEPPKPEQVESRALTMFRDIAQQLQA
 TCTSLGSSIQGLPTNVKDQVQARRQVEDLQATFSSIHSFQDLSSSILAQ
 SRERVASAREALDHMVEYVAQNTPVTWLVGPFAPGITEKAPEEKK

Host: Mouse

Reactivity: Human

Quality Control Testing: Antibody reactive against mammalian transfected lysate.

Storage Buffer: No additive

Storage Instruction: Store at -20°C or lower. Aliquot to avoid repeated freezing and thawing.

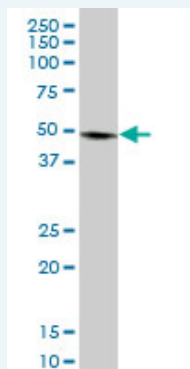
Note: For IHC and IF applications, antibody purification with Protein A will be needed prior to use.

MSDS:  [Download](#)

Datasheet:  [Download](#)

Applications

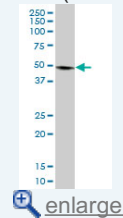
Western Blot (Tissue lysate)



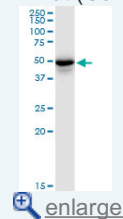
PLIN3 MaxPab polyclonal antibody. Western Blot analysis of PLIN3 expression in human pancreas.

Application Image

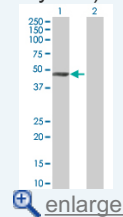
Western Blot (Tissue lysate)




Western Blot (Cell lysate)

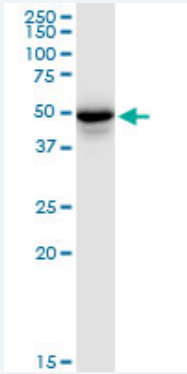


Western Blot (Transfected lysate)



 [Protocol Download](#)

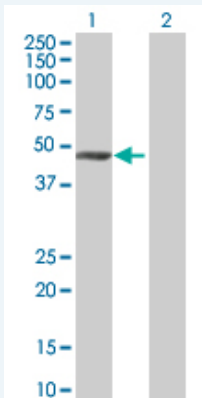
Western Blot (Cell lysate)



PLIN3 MaxPab polyclonal antibody. Western Blot analysis of PLIN3 expression in HeLa.

 [Protocol Download](#)

Western Blot (Transfected lysate)



Western Blot analysis of PLIN3 expression in transfected 293T cell line ([H00010226-T01](#)) by PLIN3 MaxPab polyclonal antibody.

Lane 1: PLIN3 transfected lysate(47.74 KDa).

Lane 2: Non-transfected lysate.

 [Protocol Download](#)

Gene Information

Entrez GeneID: [10226](#)

GeneBank [NM_005817.3](#)

Accession#:

Protein [NP_005808.2](#)

Accession#:

Gene Name: PLIN3

Gene Alias: MGC11117,MGC2012,PP17,TIP47,M6PRBP1

Gene mannose-6-phosphate receptor binding protein 1

Description:

Omim ID: [602702](#)

Gene Ontology: [Hyperlink](#)

Gene Summary: Mannose 6-phosphate receptors (MPRs) deliver lysosomal hydrolase from the Golgi to endosomes and then return to the Golgi complex. The protein encoded by this gene interacts with the cytoplasmic domains of both cation-independent and cation-dependent MPRs, and is required for endosome-to-Golgi transport. This protein also binds directly to the GTPase RAB9 (RAB9A), a member of the RAS oncogene family. The interaction with RAB9 has been shown to increase the affinity of this

protein for its cargo. Multiple transcript variants encoding different isoforms have been found for this gene

Other Designations: MPR-BINDING PROTEIN, 47-KD,MPR-binding protein 47 kDa,cargo selection protein (mannose 6 phosphate receptor binding protein),cargo selection protein TIP47,mannose 6 phosphate receptor binding protein 1,placental protein 17,tail-interacting protein, 47 kD

[服務條款](#) | [隱私權政策](#) | [著作及商標](#) | [網站地圖](#)

©2016 亞諾法生技股份有限公司 Abnova Corporation. 版權所有.