



# SZABO SCANDIC

Part of Europa Biosite

## Produktinformation



Forschungsprodukte & Biochemikalien



Zellkultur & Verbrauchsmaterial



Diagnostik & molekulare Diagnostik



Laborgeräte & Service

Weitere Information auf den folgenden Seiten!  
See the following pages for more information!



### Lieferung & Zahlungsart

siehe unsere [Liefer- und Versandbedingungen](#)

### Zuschläge

- Mindermengenzuschlag
- Trockeneiszuschlag
- Gefahrgutzuschlag
- Expressversand

### SZABO-SCANDIC HandelsgmbH

Quellenstraße 110, A-1100 Wien

T. +43(0)1 489 3961-0

F. +43(0)1 489 3961-7

[mail@szabo-scandic.com](mailto:mail@szabo-scandic.com)

[www.szabo-scandic.com](http://www.szabo-scandic.com)

[linkedin.com/company/szaboscandic](https://www.linkedin.com/company/szaboscandic) 

## PLIN3 293T Cell Transient Overexpression Lysate(Denatured)

Catalog # : H00010226-T01

規格 : [ 100 uL ]

[List All](#)

### Specification

**Transfected Cell Line:** 293T

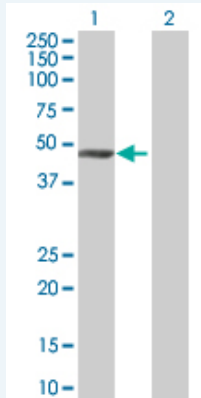
**Plasmid:** pCMV-PLIN3 full-length

**Host:** Human

**Theoretical MW (kDa):** 47.85

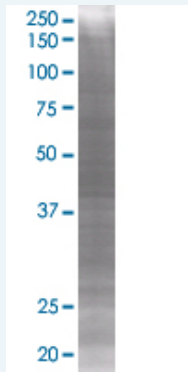
**Quality Control Testing:** Transient overexpression cell lysate was tested with Anti-PLIN3 antibody (H00010226-B01) by Western Blots.

#### Western Blot



Lane 1: PLIN3 transfected lysate ( 47 KDa)  
Lane 2: Non-transfected lysate.

#### SDS-PAGE Gel



PLIN3 transfected lysate.

**Storage Buffer:** 1X Sample Buffer (50 mM Tris-HCl, 2% SDS, 10% glycerol, 300 mM 2-mercaptoethanol, 0.01% Bromophenol blue)

**Storage Instruction:** Store at -80°C. Aliquot to avoid repeated freezing and thawing.

**MSDS:**  [Download](#)

### Applications

### Application Image

Western Blot

## Western Blot

### Gene Information

Entrez GeneID: [10226](#)

GeneBank Accession#: [NM\\_005817.3](#)

Protein Accession#: =

Gene Name: PLIN3

Gene Alias: MGC11117,MGC2012,PP17,TIP47,M6PRBP1

Gene Description: mannose-6-phosphate receptor binding protein 1

Omim ID: [602702](#)

Gene Ontology: [Hyperlink](#)

**Gene Summary:** Mannose 6-phosphate receptors (MPRs) deliver lysosomal hydrolase from the Golgi to endosomes and then return to the Golgi complex. The protein encoded by this gene interacts with the cytoplasmic domains of both cation-independent and cation-dependent MPRs, and is required for endosome-to-Golgi transport. This protein also binds directly to the GTPase RAB9 (RAB9A), a member of the RAS oncogene family. The interaction with RAB9 has been shown to increase the affinity of this protein for its cargo. Multiple transcript variants encoding different isoforms have been found for this gene

**Other Designations:** MPR-BINDING PROTEIN, 47-KD,MPR-binding protein 47 kDa,cargo selection protein (mannose 6 phosphate receptor binding protein),cargo selection protein TIP47,mannose 6 phosphate receptor binding protein 1,placental protein 17,tail-interacting protein, 47 kD

[服務條款](#) | [隱私權政策](#) | [著作及商標](#) | [網站地圖](#)

©2016 亞諾法生技股份有限公司 Abnova Corporation. 版權所有.