



# SZABO SCANDIC

Part of Europa Biosite

## Produktinformation



Forschungsprodukte & Biochemikalien



Zellkultur & Verbrauchsmaterial



Diagnostik & molekulare Diagnostik



Laborgeräte & Service

Weitere Information auf den folgenden Seiten!  
See the following pages for more information!



### Lieferung & Zahlungsart

siehe unsere [Liefer- und Versandbedingungen](#)

### Zuschläge

- Mindermengenzuschlag
- Trockeneiszuschlag
- Gefahrgutzuschlag
- Expressversand

### SZABO-SCANDIC HandelsgmbH

Quellenstraße 110, A-1100 Wien

T. +43(0)1 489 3961-0

F. +43(0)1 489 3961-7

[mail@szabo-scandic.com](mailto:mail@szabo-scandic.com)

[www.szabo-scandic.com](http://www.szabo-scandic.com)

[linkedin.com/company/szaboscandic](https://www.linkedin.com/company/szaboscandic) 

## STX6 monoclonal antibody (M01), clone 1G2

Catalog # : H00010228-M01

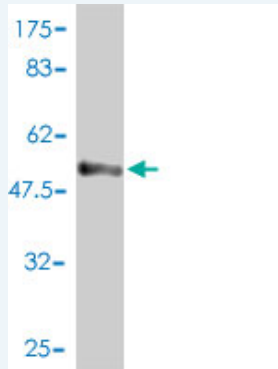
規格 : [ 100 ug ]

[List All](#)

### Specification

<b>Product Description:</b>	Mouse monoclonal antibody raised against a full length recombinant STX6.
<b>Immunogen:</b>	STX6 (AAH09944.1, 1 a.a. ~ 255 a.a) full-length recombinant protein with GST tag. MW of the GST tag alone is 26 KDa.
<b>Sequence:</b>	MSMEDPFFVVKGEVQKAVNTAQGLFQRWTELLQDPSTATREEIDWTTN ELRNNLRSIEWDLEDLDETISIVEANPRKFNLDATELSIRKAFITSTRQVVR DMKDQMSTSSVQALAEKRNQALLGDSGSQNWSTGTTDKYGRDLREL QRANSHFIEEQQAQQQLIVEQQDEQLELVSGSIGVLKNMSQRIGGELEE QAVMLEDFSHLESTQSRLDNVMKKLAKVSHMTSDRRQWCAIILFVLL VLLFLVL
<b>Host:</b>	Mouse
<b>Reactivity:</b>	Human
<b>Isotype:</b>	IgG1 kappa

**Quality Control Testing:** Antibody Reactive Against Recombinant Protein.



Western Blot detection against Immunogen (53.79 KDa) .

**Storage Buffer:** In 1x PBS, pH 7.4

**Storage Instruction:** Store at -20°C or lower. Aliquot to avoid repeated freezing and thawing.

**MSDS:** [Download](#)

**Datasheet:** [Download](#)

### Publication Reference

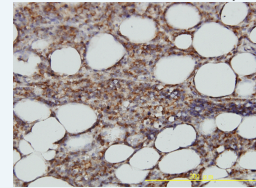
1. [An efficient two-step subcellular fractionation method for the enrichment of insulin granules from INS-1 cells.](#)  
Chen Y, Xia Z, Wang L, Yu Y, Liu P, Song E, Xu T. Biophysics Reports. 2015 Aug 7. [Epub ahead of print]

### Applications

### Application Image

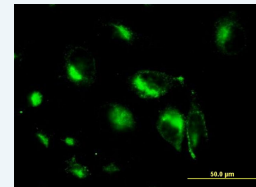
Western Blot (Recombinant protein)

Immunohistochemistry (Formalin/PFA-fixed paraffin-embedded sections)



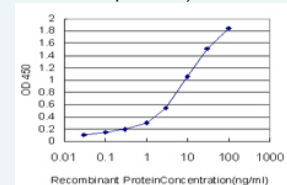
[enlarge](#)

Immunofluorescence



[enlarge](#)

Sandwich ELISA (Recombinant protein)



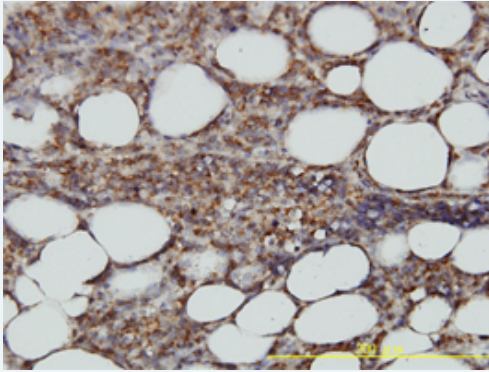
[enlarge](#)


ELISA

## Western Blot (Recombinant protein)

 [Protocol Download](#)

## Immunohistochemistry (Formalin/PFA-fixed paraffin-embedded sections)

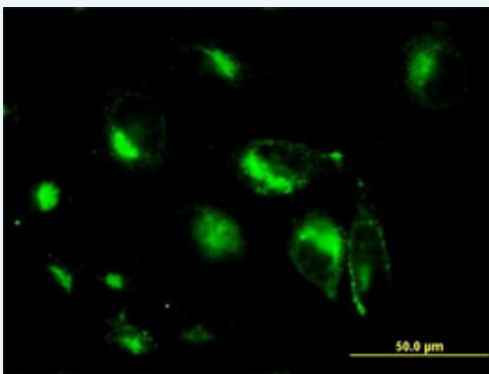



 enlarge this image

Immunoperoxidase of monoclonal antibody to STX6 on formalin-fixed paraffin-embedded human malignant lymphoma, diffuse large B tissue. [antibody concentration 3 ug/ml]

 [Protocol Download](#)

## Immunofluorescence

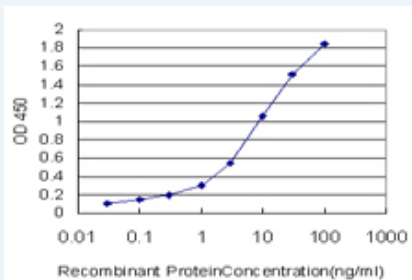


 enlarge this image

Immunofluorescence of monoclonal antibody to STX6 on HeLa cell. [antibody concentration 10 ug/ml]

 [Protocol Download](#)

## Sandwich ELISA (Recombinant protein)



Detection limit for recombinant GST tagged STX6 is approximately 0.1ng/ml as a capture antibody.

 [Protocol Download](#)

## ELISA

### Gene Information

Entrez GeneID: [10228](#)

GeneBank Accession#: [BC009944](#)

Protein Accession#: [AAH09944.1](#)

Gene Name: STX6

Gene Alias: -

Gene syntaxin 6  
Description:

Omim ID: [603944](#)

Gene Ontology: [Hyperlink](#)

Other Designations: OTTHUMP00000033134

#### Gene Pathway

[SNARE interactions in vesicular transport](#)

[服務條款](#) | [隱私權政策](#) | [著作及商標](#) | [網站地圖](#)

©2016 亞諾法生技股份有限公司 Abnova Corporation. 版權所有.