



SZABO SCANDIC

Part of Europa Biosite

Produktinformation



Forschungsprodukte & Biochemikalien



Zellkultur & Verbrauchsmaterial



Diagnostik & molekulare Diagnostik



Laborgeräte & Service

Weitere Information auf den folgenden Seiten!
See the following pages for more information!



Lieferung & Zahlungsart

siehe unsere [Liefer- und Versandbedingungen](#)

Zuschläge

- Mindermengenzuschlag
- Trockeneiszuschlag
- Gefahrgutzuschlag
- Expressversand

SZABO-SCANDIC HandelsgmbH

Quellenstraße 110, A-1100 Wien

T. +43(0)1 489 3961-0

F. +43(0)1 489 3961-7

mail@szabo-scandic.com

www.szabo-scandic.com

[linkedin.com/company/szaboscandic](https://www.linkedin.com/company/szaboscandic) 

MSLN purified MaxPab mouse polyclonal antibody (B01P) MaxPab®

Catalog # : H00010232-B01P

規格 : [50 ug]

List All

Specification

Product Description: Mouse polyclonal antibody raised against a full-length human MSLN protein.

Immunogen: MSLN (AAH03512.1, 1 a.a. ~ 621 a.a) full-length human protein.

Sequence:
 MALPTARPLLGSCGTPALGSLFLFLSLGWQPSRTLGETGQAAPLD
 GVLANPPNISSLSPRQLLGFPCAIEVSGLSTERVRELAVALAQKNVCLSTE
 QLRCLAHRLSEPPEDLDALPLDLLFLNPDAFSGPQACTRFFSRITKANV
 DLLPRGAPERQRLLPAALACWGVRSLLSEADVRLGGLACDLPGRFV
 AESAEVLLPRLVSCPGPLDQDQQAARAALQGGGPPYGGPSTWSVST
 MDALRGLLPVLGQPIIRSIPQGIVAARQRSSRDPSWRQPRTLPRFR
 REVEKTACPSGKKAREIDESLIFYKKWELEACVDAALLATQMDRVNAIPF
 TYEQLDVLKHKLDELYPQGYPESVIQHLGYLFLKMSPEDIRKWNVTSL
 LKALLEVNGHEMSPQVATLIDRFVKGRGQLDKDLDLTLTAFYPGYLC
 LSPEELSSVPPSSWAVRPQDLTCDPRQLDVLYPKARLAFQNMNGSEY
 FVKIQSFLGGAPTEDLKALSQQNVSMDLATFMKLRDVAVPLTVAEVQK
 LLGPHVEGLKAEERHRPVRDWILRQRQDDLDTLGLGLQGGIPNGYLVLD
 LSVQEALSGTPCLLGGPVLTLVALLLASTLA

Host: Mouse

Reactivity: Human

Quality Control Testing: Antibody reactive against mammalian transfected lysate.

Storage Buffer: In 1x PBS, pH 7.4

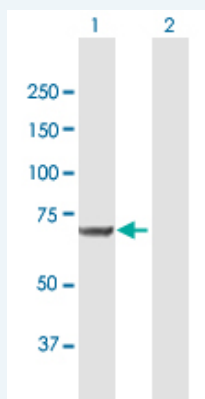
Storage Instruction: Store at -20°C or lower. Aliquot to avoid repeated freezing and thawing.

MSDS:  [Download](#)

Datasheet:  [Download](#)

Applications

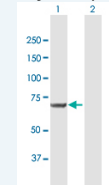
Western Blot (Transfected lysate)




Western Blot analysis of MSLN expression in transfected 293T cell line ([H00010232-T01](#)) by MSLN MaxPab polyclonal antibody.

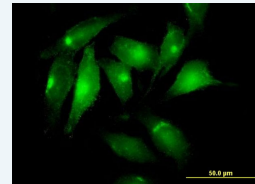
Application Image

Western Blot (Transfected lysate)



 [enlarge](#)

Immunofluorescence

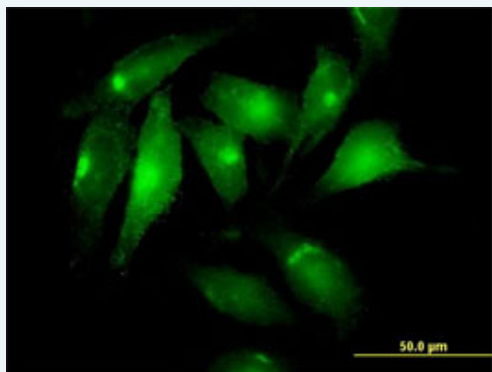



 [enlarge](#)

Lane 1: MSLN transfected lysate(68.31 KDa).
Lane 2: Non-transfected lysate.

 [Protocol Download](#)

Immunofluorescence



 [enlarge this image](#)

Immunofluorescence of purified MaxPab antibody to MSLN on HeLa cell. [antibody concentration 10 ug/ml]

 [Protocol Download](#)

Gene Information

Entrez GeneID: [10232](#)

GeneBank [BC003512.1](#)

Accession#:

Protein [AAH03512.1](#)

Accession#:

Gene Name: MSLN

Gene Alias: CAK1,MPF,SMR

Gene mesothelin

Description:

Omim ID: [601051](#)

Gene Ontology: [Hyperlink](#)

Gene Summary: An antibody that reacts with ovarian cancers and mesotheliomas was used to isolate a cell surface antigen named mesothelin. Although the function of mesothelin is unknown, it may play a role in cellular adhesion and is present on mesothelium, mesotheliomas, and ovarian cancers. This gene encodes a preproprotein that is cleaved into two products, megakaryocyte potentiating factor and mesothelin. Alternative splicing results in multiple transcript variants. [provided by RefSeq]

Other megakaryocyte potentiating factor

Designations:

Related Disease

[Adenocarcinoma](#) [Asbestosis](#) [Esophageal Neoplasms](#) [Mesothelioma](#) [Occupational Diseases](#)
[Pleural Neoplasms](#)