



# SZABO SCANDIC

Part of Europa Biosite

## Produktinformation



Forschungsprodukte & Biochemikalien



Zellkultur & Verbrauchsmaterial



Diagnostik & molekulare Diagnostik



Laborgeräte & Service

Weitere Information auf den folgenden Seiten!  
See the following pages for more information!



### Lieferung & Zahlungsart

siehe unsere [Liefer- und Versandbedingungen](#)

### Zuschläge

- Mindermengenzuschlag
- Trockeneiszuschlag
- Gefahrgutzuschlag
- Expressversand

### SZABO-SCANDIC HandelsgmbH

Quellenstraße 110, A-1100 Wien

T. +43(0)1 489 3961-0

F. +43(0)1 489 3961-7

[mail@szabo-scandic.com](mailto:mail@szabo-scandic.com)

[www.szabo-scandic.com](http://www.szabo-scandic.com)

[linkedin.com/company/szaboscandic](https://www.linkedin.com/company/szaboscandic) 

## MSLN purified MaxPab rabbit polyclonal antibody (D01P) MaxPab®

Catalog # : H00010232-D01P

規格 : [ 100 ug ]

[List All](#)

### Specification

**Product Description:** Rabbit polyclonal antibody raised against a full-length human MSLN protein.

**Immunogen:** MSLN (AAH03512.1, 1 a.a. ~ 621 a.a) full-length human protein.

**Sequence:**  
 MALPTARPLLGSCGTPALGSLFLFLFSLGWQPSRTLGETGQAAPLD  
 GVLANPPNISSLSPRQLLGFPCEVSGLSTERVRELAVALAQKNVKLSTE  
 QLRCLAHRLSEPPEDLDALPLDLLFLNPDAFSGPQACTRFFSRITKANV  
 DLLPRGAPERQRLLPAALACWGVRSLLSEADVRLGGLACDLPGRFV  
 AESAEVLLPRLVSCPGPLDQDQQAARAALQGGGPPYGGPSTWSVST  
 MDALRGLLPVLGQPIIRSIPQGIVAAWRQRSSRDPSWRQPRTLPRFR  
 REVEKTACPSGKKAREIDESLIFYKKWELEACVDAALLATQMDRVNAIPF  
 TYEQLDVLKHKLDELYPQGYPESVIQHLGYLFLKMSPEDIRKWNVTSL  
 LKALLEVNGHEMSPQVATLIDRFVKGRGQLDKDLDLTLTAFYPGYLC  
 LSPEELSSVPPSSWAVRPQDLDTCDPRQLDVLYPKARLAFQNMNGSEY  
 FVKIQSFLGGAPTEDLKALSQQNVSMDLATFMKLRTDAVPLTVAEVQK  
 LLGPHVEGLKAEERHRPVRDWILRQRQDDLDLGLGLQGGIPNGYLVLD  
 LSVQEALSGTPCLLGGPVLTVLALLLASTLA

**Host:** Rabbit

**Reactivity:** Human

**Quality Control Testing:** Antibody reactive against mammalian transfected lysate.

**Storage Buffer:** In 1x PBS, pH 7.4

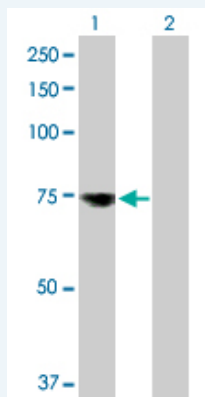
**Storage Instruction:** Store at -20°C or lower. Aliquot to avoid repeated freezing and thawing.

**MSDS:**  [Download](#)

**Datasheet:**  [Download](#)

### Applications

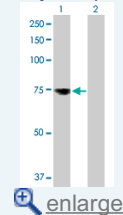
#### Western Blot (Transfected lysate)




Western Blot analysis of MSLN expression in transfected 293T cell line ([H00010232-T02](#)) by MSLN MaxPab polyclonal antibody.

### Application Image

Western Blot (Transfected lysate)



 [enlarge](#)

Lane 1: MSLN transfected lysate(67.90 KDa).  
Lane 2: Non-transfected lysate.

 [Protocol Download](#)

---

### Gene Information

---

**Entrez GeneID:** [10232](#)

---

**GeneBank  
Accession#:** [BC003512.1](#)

---

**Protein  
Accession#:** [AAH03512.1](#)

---

**Gene Name:** MSLN

---

**Gene Alias:** CAK1,MPF,SMR

---

**Gene  
Description:** mesothelin

---

**Omim ID:** [601051](#)

---

**Gene Ontology:** [Hyperlink](#)

---

**Gene Summary:** An antibody that reacts with ovarian cancers and mesotheliomas was used to isolate a cell surface antigen named mesothelin. Although the function of mesothelin is unknown, it may play a role in cellular adhesion and is present on mesothelium, mesotheliomas, and ovarian cancers. This gene encodes a preproprotein that is cleaved into two products, megakaryocyte potentiating factor and mesothelin. Alternative splicing results in multiple transcript variants. [provided by RefSeq]

---

**Other  
Designations:** megakaryocyte potentiating factor

---

### Related Disease

---

[Adenocarcinoma](#) [Asbestosis](#) [Esophageal Neoplasms](#) [Mesothelioma](#) [Occupational Diseases](#)  
[Pleural Neoplasms](#)

---

[服務條款](#) | [隱私權政策](#) | [著作及商標](#) | [網站地圖](#)

©2016 亞諾法生技股份有限公司 Abnova Corporation. 版權所有.