



# SZABO SCANDIC

Part of Europa Biosite

## Produktinformation



Forschungsprodukte & Biochemikalien



Zellkultur & Verbrauchsmaterial



Diagnostik & molekulare Diagnostik



Laborgeräte & Service

Weitere Information auf den folgenden Seiten!  
See the following pages for more information!



### Lieferung & Zahlungsart

siehe unsere [Liefer- und Versandbedingungen](#)

### Zuschläge

- Mindermengenzuschlag
- Trockeneiszuschlag
- Gefahrgutzuschlag
- Expressversand

### SZABO-SCANDIC HandelsgmbH

Quellenstraße 110, A-1100 Wien

T. +43(0)1 489 3961-0

F. +43(0)1 489 3961-7

[mail@szabo-scandic.com](mailto:mail@szabo-scandic.com)

[www.szabo-scandic.com](http://www.szabo-scandic.com)

[linkedin.com/company/szaboscandic](https://www.linkedin.com/company/szaboscandic) 

## MSLN 293T Cell Transient Overexpression Lysate(Denatured)

Catalog # : H00010232-T01

規格 : [ 100 uL ]

[List All](#)

### Specification

**Transfected Cell Line:** 293T

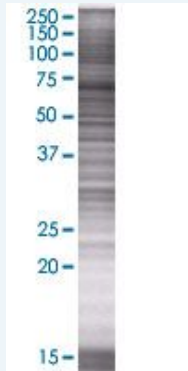
**Plasmid:** pCMV-MSLN full-length

**Host:** Human

**Theoretical MW (kDa):** 68.42

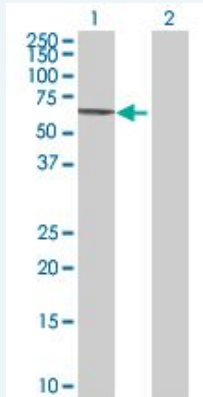
**Quality Control Testing:** Transient overexpression cell lysate was tested with Anti-MSLN antibody (H00010232-B01) by Western Blots.

#### SDS-PAGE Gel



MSLN transfected lysate.

#### Western Blot



Lane 1: MSLN transfected lysate ( 68.42 KDa)

Lane 2: Non-transfected lysate.

**Storage Buffer:** 1X Sample Buffer (50 mM Tris-HCl, 2% SDS, 10% glycerol, 300 mM 2-mercaptoethanol, 0.01% Bromophenol blue)

**Storage Instruction:** Store at -80°C. Aliquot to avoid repeated freezing and thawing.

**MSDS:**  [Download](#)

### Applications

### Application Image

Western Blot

## Western Blot

### Gene Information

Entrez GeneID: [10232](#)

GeneBank Accession#: [BC003512.1](#)

Protein Accession#: [AAH03512.1](#)

Gene Name: MSLN

Gene Alias: CAK1,MPF,SMR

Gene Description: mesothelin

Omim ID: [601051](#)

Gene Ontology: [Hyperlink](#)

**Gene Summary:** An antibody that reacts with ovarian cancers and mesotheliomas was used to isolate a cell surface antigen named mesothelin. Although the function of mesothelin is unknown, it may play a role in cellular adhesion and is present on mesothelium, mesotheliomas, and ovarian cancers. This gene encodes a preproprotein that is cleaved into two products, megakaryocyte potentiating factor and mesothelin. Alternative splicing results in multiple transcript variants. [provided by RefSeq]

Other Designations: megakaryocyte potentiating factor

### Related Disease

[Adenocarcinoma](#) [Asbestosis](#) [Esophageal Neoplasms](#) [Mesothelioma](#) [Occupational Diseases](#) [Pleural Neoplasms](#)