



SZABO SCANDIC

Part of Europa Biosite

Produktinformation



Forschungsprodukte & Biochemikalien



Zellkultur & Verbrauchsmaterial



Diagnostik & molekulare Diagnostik



Laborgeräte & Service

Weitere Information auf den folgenden Seiten!
See the following pages for more information!



Lieferung & Zahlungsart

siehe unsere [Liefer- und Versandbedingungen](#)

Zuschläge

- Mindermengenzuschlag
- Trockeneiszuschlag
- Gefahrgutzuschlag
- Expressversand

SZABO-SCANDIC HandelsgmbH

Quellenstraße 110, A-1100 Wien

T. +43(0)1 489 3961-0

F. +43(0)1 489 3961-7

mail@szabo-scandic.com

www.szabo-scandic.com

[linkedin.com/company/szaboscandic](https://www.linkedin.com/company/szaboscandic) 

MSLN 293T Cell Transient Overexpression Lysate(Denatured)

Catalog # : H00010232-T02

規格 : [100 uL]

[List All](#)

Specification

Transfected Cell Line: 293T

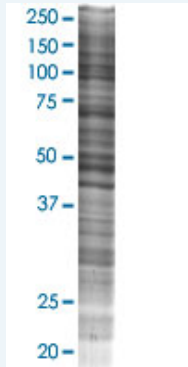
Plasmid: pCMV-MSLN full-length

Host: Human

Theoretical MW (kDa): 67.9

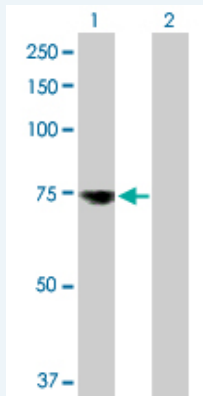
Quality Control Testing: Transient overexpression cell lysate was tested with Anti-MSLN antibody (H00010232-D01P) by Western Blots.

SDS-PAGE Gel



MSLN transfected lysate.

Western Blot



Lane 1: MSLN transfected lysate (67.90 KDa)

Lane 2: Non-transfected lysate.

Storage Buffer: 1X Sample Buffer (50 mM Tris-HCl, 2% SDS, 10% glycerol, 300 mM 2-mercaptoethanol, 0.01% Bromophenol blue)

Storage Instruction: Store at -80°C. Aliquot to avoid repeated freezing and thawing.

MSDS:  [Download](#)

Applications

Application Image

Western Blot

Western Blot

Gene Information

Entrez GeneID: [10232](#)

GeneBank Accession#: [BC003512.1](#)

Protein Accession#: [AAH03512.1](#)

Gene Name: MSLN

Gene Alias: CAK1,MPF,SMR

Gene Description: mesothelin

Omim ID: [601051](#)

Gene Ontology: [Hyperlink](#)

Gene Summary: An antibody that reacts with ovarian cancers and mesotheliomas was used to isolate a cell surface antigen named mesothelin. Although the function of mesothelin is unknown, it may play a role in cellular adhesion and is present on mesothelium, mesotheliomas, and ovarian cancers. This gene encodes a preproprotein that is cleaved into two products, megakaryocyte potentiating factor and mesothelin. Alternative splicing results in multiple transcript variants. [provided by RefSeq]

Other Designations: megakaryocyte potentiating factor

Related Disease

[Adenocarcinoma](#) [Asbestosis](#) [Esophageal Neoplasms](#) [Mesothelioma](#) [Occupational Diseases](#) [Pleural Neoplasms](#)