



SZABO SCANDIC

Part of Europa Biosite

Produktinformation



Forschungsprodukte & Biochemikalien



Zellkultur & Verbrauchsmaterial



Diagnostik & molekulare Diagnostik



Laborgeräte & Service

Weitere Information auf den folgenden Seiten!
See the following pages for more information!



Lieferung & Zahlungsart

siehe unsere [Liefer- und Versandbedingungen](#)

Zuschläge

- Mindermengenzuschlag
- Trockeneiszuschlag
- Gefahrgutzuschlag
- Expressversand

SZABO-SCANDIC HandelsgmbH

Quellenstraße 110, A-1100 Wien

T. +43(0)1 489 3961-0

F. +43(0)1 489 3961-7

mail@szabo-scandic.com

www.szabo-scandic.com

[linkedin.com/company/szaboscandic](https://www.linkedin.com/company/szaboscandic) 

LRRC23 MaxPab mouse polyclonal antibody (B01) MaxPab®

Catalog # : H00010233-B01

規格 : [50 uL]

[List All](#)

Specification

Product Description: Mouse polyclonal antibody raised against a full-length human LRRC23 protein.

Immunogen: LRRC23 (AAH29858, 1 a.a. ~ 343 a.a) full-length human protein.

Sequence:
 MSDEDDLEDSEPDQDDSEKEEDEKETEEGEDYRKEGEEFPPEEWLPTPL
 TEDMMKEGLSLLCKTGNGLAHAYVKLEVKERDLTDIYLLRSYIHLRYVDIS
 ENHLTDLSPNLNYLTHLLWLKADGNLLRSAQMNELPYLQIASFAYNQITDTE
 GISHPRLETNLKGNLSIHMTGLDPEKLISLHTVELRGNQLESTLGINLPKL
 KNLYLAQNMLKKVEGLEDSLNTTLHLRDNQIDTLSGFSREMKSLLQYLNL
 RGNM/VANL GELAKLRDLPKLRALVLLDNPCTDETSYRQEALVQMPYLER
 LDKEYEEEEERAEADVIRQLKEEKEQEPEPQRDLEPEQSLI

Host: Mouse

Reactivity: Human

Quality Control Testing: Antibody reactive against mammalian transfected lysate.

Storage Buffer: No additive

Storage Instruction: Store at -20°C or lower. Aliquot to avoid repeated freezing and thawing.

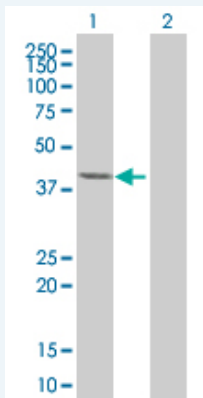
Note: For IHC and IF applications, antibody purification with Protein A will be needed prior to use.

MSDS:  [Download](#)

Datasheet:  [Download](#)

Applications

Western Blot (Transfected lysate)



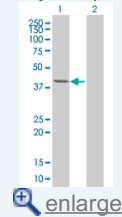
Western Blot analysis of LRRC23 expression in transfected 293T cell line ([H00010233-T01](#)) by LRRC23 MaxPab polyclonal antibody.


Lane 1: LRRC23 transfected lysate(37.84 KDa).

Lane 2: Non-transfected lysate.

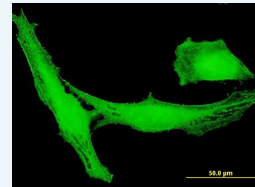
Application Image


Western Blot (Transfected lysate)



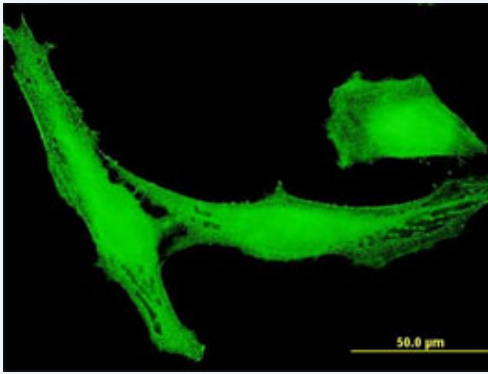
 [enlarge](#)


Immunofluorescence



 [enlarge](#)

Immunofluorescence



 enlarge this image

Immunofluorescence of purified MaxPab antibody to LRRC23 on HeLa cell. [antibody concentration 10 ug/ml]

Gene Information

Entrez GeneID: [10233](#)

**GeneBank
Accession#:** [BC029858](#)

**Protein
Accession#:** [AAH29858](#)

Gene Name: LRRC23

Gene Alias: LRPB7

**Gene
Description:** leucine rich repeat containing 23

Gene Ontology: [Hyperlink](#)

**Other
Designations:** B7