



SZABO SCANDIC

Part of Europa Biosite

Produktinformation



Forschungsprodukte & Biochemikalien



Zellkultur & Verbrauchsmaterial



Diagnostik & molekulare Diagnostik



Laborgeräte & Service

Weitere Information auf den folgenden Seiten!
See the following pages for more information!



Lieferung & Zahlungsart

siehe unsere [Liefer- und Versandbedingungen](#)

Zuschläge

- Mindermengenzuschlag
- Trockeneiszuschlag
- Gefahrgutzuschlag
- Expressversand

SZABO-SCANDIC HandelsgmbH

Quellenstraße 110, A-1100 Wien

T. +43(0)1 489 3961-0

F. +43(0)1 489 3961-7

mail@szabo-scandic.com

www.szabo-scandic.com

[linkedin.com/company/szaboscandic](https://www.linkedin.com/company/szaboscandic) 

LRRC17 purified MaxPab mouse polyclonal antibody (B01P) MaxPab®

Catalog # : H00010234-B01P

規格 : [50 ug]

[List All](#)

Specification

Product Description: Mouse polyclonal antibody raised against a full-length human LRRC17 protein.

Immunogen: LRRC17 (NP_001026862.1, 1 a.a. ~ 441 a.a) full-length human protein.

Sequence:
 MRVVTIVILLCFCKAAELRKASPGSVRSRVNHGRAGGGRRGSSNPVKRYA
 PGLPCDVYTYLHEKYLDCQERKLVYVLPGWPDLLHMLLARNKIRTLKN
 NMFSKFKKLSLDLQQNEISKIESEAFFGLNKLTTLLQHNQIKVLTEEVFI
 YTPLLSYLRLYDNPWHCTCEIETLISMLQIPRNRNLGNYAKCESPQEQKN
 KCLRQIKSEQLCNEEEKEQLDPKPQVSGRPPVIKPEVDSTFCHNYVFPQI
 TLDCKRKELKKVPMNIPPDIKLDLSYNKINQLRPKEFEDVHELKKNLSSN
 GIEFIDPAFLGLTHLEELDSLNSLQNFYDYGVLLEDLYFLKLLWLRDNPW
 RCDYNIHYLYYWLKHHYVHFNGLECKTPEEYKGWSVGKYIRSYEECP
 KDKLPAYPESFDQDTEDEWEKKHRDHTAKKQSVIITVG

Host: Mouse

Reactivity: Human

Quality Control Testing: Antibody reactive against mammalian transfected lysate.

Storage Buffer: In 1x PBS, pH 7.4

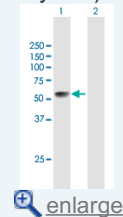
Storage Instruction: Store at -20°C or lower. Aliquot to avoid repeated freezing and thawing.

MSDS:  [Download](#)

Datasheet:  [Download](#)

Application Image

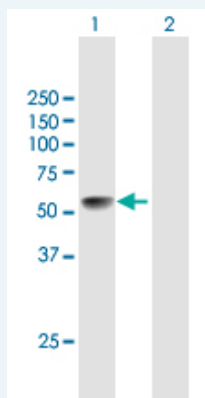
Western Blot (Transfected lysate)



 [enlarge](#)

Applications

Western Blot (Transfected lysate)



Western Blot analysis of LRRC17 expression in transfected 293T cell line ([H00010234-T01](#)) by LRRC17 MaxPab polyclonal antibody.

Lane 1: LRRC17 transfected lysate(48.51 KDa).

Lane 2: Non-transfected lysate.

Gene Information

Entrez GeneID: [10234](#)

**GeneBank
Accession#:** [NM_001031692.1](#)

**Protein
Accession#:** [NP_001026862.1](#)

Gene Name: LRRC17

Gene Alias: P37NB

**Gene
Description:** leucine rich repeat containing 17

Gene Ontology: [Hyperlink](#)

**Other
Designations:** 37 kDa leucine-rich repeat (LRR) protein,H_RG318M05.3
