



SZABO SCANDIC

Part of Europa Biosite

Produktinformation



Forschungsprodukte & Biochemikalien



Zellkultur & Verbrauchsmaterial



Diagnostik & molekulare Diagnostik



Laborgeräte & Service

Weitere Information auf den folgenden Seiten!
See the following pages for more information!



Lieferung & Zahlungsart

siehe unsere [Liefer- und Versandbedingungen](#)

Zuschläge

- Mindermengenzuschlag
- Trockeneiszuschlag
- Gefahrgutzuschlag
- Expressversand

SZABO-SCANDIC HandelsgmbH

Quellenstraße 110, A-1100 Wien

T. +43(0)1 489 3961-0

F. +43(0)1 489 3961-7

mail@szabo-scandic.com

www.szabo-scandic.com

[linkedin.com/company/szaboscandic](https://www.linkedin.com/company/szaboscandic) 



AP3S2 purified MaxPab mouse polyclonal antibody (B01P) MaxPab®

Catalog # : H00010239-B01P

規格 : [50 ug]

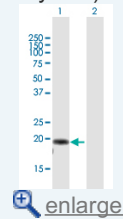
[List All](#)


Specification

Product Description:	Mouse polyclonal antibody raised against a full-length human AP3S2 protein.
Immunogen:	AP3S2 (NP_005820.1, 1 a.a. ~ 193 a.a) full-length human protein.
Sequence:	MIQAILVFNNHGKPRLVRFYQRFPEEIQQQIVRETFHLVLKRDDNICNFLE GGSLIGGSDYKLIYRHYATLYFVFCVDSSESELGILDLIQVVFETLDKCFE NVCELDLIFHMDKVHYILQEVVMGGMLETNMNEIVAQIEAQRLEKSEG GLSAAPARAVSAVKNNINLPEIPRNINIGDLNIKVPNLSQFV
Host:	Mouse
Reactivity:	Human
Quality Control Testing:	Antibody reactive against mammalian transfected lysate.
Storage Buffer:	In 1x PBS, pH 7.4
Storage Instruction:	Store at -20°C or lower. Aliquot to avoid repeated freezing and thawing.
MSDS:	 Download
Datasheet:	 Download

Application Image

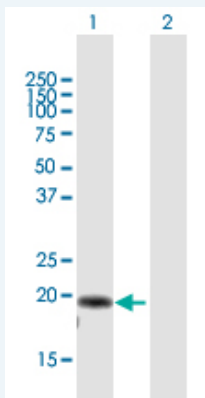
Western Blot (Transfected lysate)



 [enlarge](#)

Applications

Western Blot (Transfected lysate)



Western Blot analysis of AP3S2 expression in transfected 293T cell line ([H00010239-T01](#)) by AP3S2 MaxPab polyclonal antibody.

Lane 1: AP3S2 transfected lysate(21.23 KDa).
Lane 2: Non-transfected lysate.

 [Protocol Download](#)

Gene Information

Entrez GeneID: [10239](#)

GeneBank Accession#: [NM_005829.3](#)

Protein Accession#: [NP_005820.1](#)

Gene Name: AP3S2

Gene Alias: AP3S3,FLJ35955,sigma3b

Gene Description: adaptor-related protein complex 3, sigma 2 subunit

Omim ID: [602416](#)

Gene Ontology: [Hyperlink](#)

Other Designations: adaptor complex sigma3B,clathrin-associated/assembly/adaptor protein, small 4, 22-kD

Gene Pathway

[Lysosome](#)

Related Disease

[Carotid Artery Diseases Plaque, Atherosclerotic](#)