



SZABO SCANDIC

Part of Europa Biosite

Produktinformation



Forschungsprodukte & Biochemikalien



Zellkultur & Verbrauchsmaterial



Diagnostik & molekulare Diagnostik



Laborgeräte & Service

Weitere Information auf den folgenden Seiten!
See the following pages for more information!



Lieferung & Zahlungsart

siehe unsere [Liefer- und Versandbedingungen](#)

Zuschläge

- Mindermengenzuschlag
- Trockeneiszuschlag
- Gefahrgutzuschlag
- Expressversand

SZABO-SCANDIC HandelsgmbH

Quellenstraße 110, A-1100 Wien

T. +43(0)1 489 3961-0

F. +43(0)1 489 3961-7

mail@szabo-scandic.com

www.szabo-scandic.com

[linkedin.com/company/szaboscandic](https://www.linkedin.com/company/szaboscandic) 

MRPS31 purified MaxPab mouse polyclonal antibody (B01P) MaxPab®

Catalog # : H00010240-B01P

規格 : [50 ug]

[List All](#)

Specification

Product Description: Mouse polyclonal antibody raised against a full-length human MRPS31 protein.

Immunogen: MRPS31 (AAH22045.1, 1 a.a. ~ 395 a.a) full-length human protein.

Sequence:
 MFPRVSTFLPLRPLSRHPLSSGSPETSAAAIMLLTVRHGTVRYRSSALLA
 RTKNNIQRYPFGTNSVICSKKDKQSVRTEEISKETSESQDSEKENTKKDLL
 GIIKGMKVELSTVNVRTTKPPKRRPLKSLEAALGRLRRATEYAPKKRIEPL
 SPELVAAASAVADSLPFDKQTTKSELLSQLQQHEEESRAQRDAKRPKIS
 FSNISDMKVARSATARVRSRPELRIQFDEGYDNYPGQEKTDDLKRRKNIF
 TGKRLNIFDMAVTKAPETDTSPSLWDVEFAKQLATVNEQPLQNGFEE
 LIQWTKEGKLWEFPINNEAGFDDDGSEFHEHIFLEKHLESFQKQPIRHF
 MELVTCGLSKNPYLSVKQKVEHIEWFRNYFNEKKDILKESNIQFN

Host: Mouse

Reactivity: Human

Quality Control Testing: Antibody reactive against mammalian transfected lysate.

Storage Buffer: In 1x PBS, pH 7.4

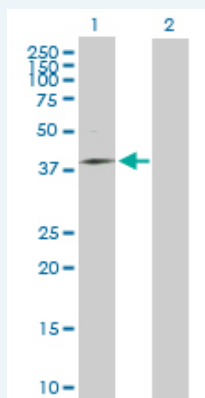
Storage Instruction: Store at -20°C or lower. Aliquot to avoid repeated freezing and thawing.

MSDS: [Download](#)

Datasheet: [Download](#)

Applications

Western Blot (Transfected lysate)



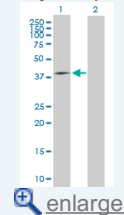
Western Blot analysis of MRPS31 expression in transfected 293T cell line ([H00010240-T02](#)) by MRPS31 MaxPab polyclonal antibody.

Lane 1: MRPS31 transfected lysate(43.45 KDa).

Lane 2: Non-transfected lysate.

Application Image

Western Blot (Transfected lysate)



[Protocol Download](#)

Gene Information

Entrez GeneID: [10240](#)

**GeneBank
Accession#:** [BC022045](#)

**Protein
Accession#:** [AAH22045.1](#)

Gene Name: MRPS31

Gene Alias: IMOGN38,MRP-S31,S31mt

**Gene
Description:** mitochondrial ribosomal protein S31

Gene Ontology: [Hyperlink](#)

Gene Summary: Mammalian mitochondrial ribosomal proteins are encoded by nuclear genes and help in protein synthesis within the mitochondrion. Mitochondrial ribosomes (mitoribosomes) consist of a small 28S subunit and a large 39S subunit. They have an estimated 75% protein to rRNA composition compared to prokaryotic ribosomes, where this ratio is reversed. Another difference between mammalian mitoribosomes and prokaryotic ribosomes is that the latter contain a 5S rRNA. Among different species, the proteins comprising the mitoribosome differ greatly in sequence, and sometimes in biochemical properties, which prevents easy recognition by sequence homology. The 28S subunit of the mammalian mitoribosome may play a crucial and characteristic role in translation initiation. This gene encodes a 28S subunit protein that has also been associated with type 1 diabetes; however, its relationship to the etiology of this disease remains to be clarified. Pseudogenes corresponding to this gene have been found on chromosomes 3 and 13. [provided by RefSeq]

**Other
Designations:** OTTHUMP00000018305,imogen 38

[服務條款](#) | [隱私權政策](#) | [著作及商標](#) | [網站地圖](#)

©2016 亞諾法生技股份有限公司 Abnova Corporation. 版權所有.