



# SZABO SCANDIC

Part of Europa Biosite

## Produktinformation



Forschungsprodukte & Biochemikalien



Zellkultur & Verbrauchsmaterial



Diagnostik & molekulare Diagnostik



Laborgeräte & Service

Weitere Information auf den folgenden Seiten!  
See the following pages for more information!



### Lieferung & Zahlungsart

siehe unsere [Liefer- und Versandbedingungen](#)

### Zuschläge

- Mindermengenzuschlag
- Trockeneiszuschlag
- Gefahrgutzuschlag
- Expressversand

### SZABO-SCANDIC HandelsgmbH

Quellenstraße 110, A-1100 Wien

T. +43(0)1 489 3961-0

F. +43(0)1 489 3961-7

[mail@szabo-scandic.com](mailto:mail@szabo-scandic.com)

[www.szabo-scandic.com](http://www.szabo-scandic.com)

[linkedin.com/company/szaboscandic](https://www.linkedin.com/company/szaboscandic) 

## KCNMB2 MaxPab mouse polyclonal antibody (B01) MaxPab®

Catalog # : H00010242-B01

規格 : [ 50 uL ]

[List All](#)

### Specification

**Product Description:** Mouse polyclonal antibody raised against a full-length human KCNMB2 protein.

**Immunogen:** KCNMB2 (NP\_005823, 1 a.a. ~ 235 a.a) full-length human protein.

**Sequence:**  
 MFIWTSGR TSSSYRHDEKRNIYQKIRDHLLDKRKTVTALKAGEDRAILL  
 GLAMMVCSIMMYFLLGITLLRSYMQSVWTEESQCTLLNASITETFNCFSFS  
 CGPDCWKL SQYPCLQVYVNL TSSGEKLLLYHTEETIKINQKCSYIPKCGK  
 NFEESMSLVNVVMENFRKYQHFSCYSDPEGNQKSVILTKLYSSNVL FHSL  
 FWPTCMMAGGVAIVAMVKL TQYLSLLCERIQRINR

**Host:** Mouse

**Reactivity:** Human

**Quality Control Testing:** Antibody reactive against mammalian transfected lysate.

**Storage Buffer:** No additive

**Storage Instruction:** Store at -20°C or lower. Aliquot to avoid repeated freezing and thawing.

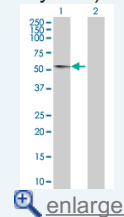
**Note:** For IHC and IF applications, antibody purification with Protein A will be needed prior to use.


**MSDS:**  [Download](#)

**Datasheet:**  [Download](#)

### Application Image

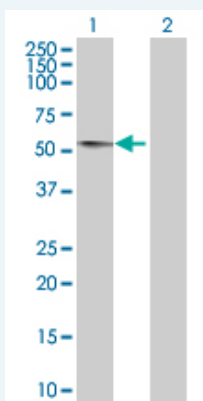
Western Blot (Transfected lysate)



 [enlarge](#)

### Applications


Western Blot (Transfected lysate)



Western Blot analysis of KCNMB2 expression in transfected 293T cell line (H00010242-T01) by KCNMB2 MaxPab polyclonal antibody.

Lane 1: KCNMB2 transfected lysate(25.85 KDa).

Lane 2: Non-transfected lysate.

 [Protocol Download](#)

## Gene Information

---

**Entrez GeneID:** [10242](#)

---

**GeneBank  
Accession#:** [NM\\_005832](#)

---

**Protein  
Accession#:** [NP\\_005823](#)

---

**Gene Name:** KCNMB2

---

**Gene Alias:** MGC22431

---

**Gene  
Description:** potassium large conductance calcium-activated channel, subfamily M, beta member 2

---

**Omim ID:** [605214](#)

---

**Gene Ontology:** [Hyperlink](#)

---

**Gene Summary:** MaxiK channels are large conductance, voltage and calcium-sensitive potassium channels which are fundamental to the control of smooth muscle tone and neuronal excitability. MaxiK channels can be formed by 2 subunits: the pore-forming alpha subunit and the modulatory beta subunit. The protein encoded by this gene is an auxiliary beta subunit which decreases the activation time of MaxiK alpha subunit currents. Two variants encoding the same protein have been found for this gene. [provided by RefSeq]

---

**Other  
Designations:** MaxiK channel beta 2 subunit,calcium-activated potassium channel beta 2 subunit,large conductance calcium-activated potassium channel beta 2 subunit,large-conductance Ca2+-activated K+ channel beta2 subunit

---

## Gene Pathway

---

[Vascular smooth muscle contraction](#)

---

[服務條款](#) | [隱私權政策](#) | [著作及商標](#) | [網站地圖](#)

©2016 亞諾法生技股份有限公司 Abnova Corporation. 版權所有.