



SZABO SCANDIC

Part of Europa Biosite

Produktinformation



Forschungsprodukte & Biochemikalien



Zellkultur & Verbrauchsmaterial



Diagnostik & molekulare Diagnostik



Laborgeräte & Service

Weitere Information auf den folgenden Seiten!
See the following pages for more information!



Lieferung & Zahlungsart

siehe unsere [Liefer- und Versandbedingungen](#)

Zuschläge

- Mindermengenzuschlag
- Trockeneiszuschlag
- Gefahrgutzuschlag
- Expressversand

SZABO-SCANDIC HandelsgmbH

Quellenstraße 110, A-1100 Wien

T. +43(0)1 489 3961-0

F. +43(0)1 489 3961-7

mail@szabo-scandic.com

www.szabo-scandic.com

[linkedin.com/company/szaboscandic](https://www.linkedin.com/company/szaboscandic) 

KCNMB2 293T Cell Transient Overexpression Lysate(Denatured)

Catalog # : H00010242-T01

規格 : [100 uL]

List All

Specification

Transfected Cell Line: 293T

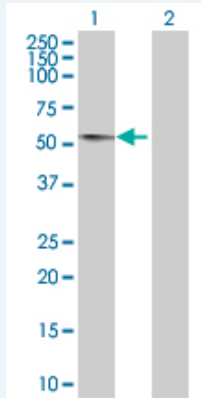
Plasmid: pCMV-KCNMB2 full-length

Host: Human

Theoretical MW (kDa): 25.96

Quality Control Testing: Transient overexpression cell lysate was tested with Anti-KCNMB2 antibody ([H00010242-B01](#)) by Western Blots.

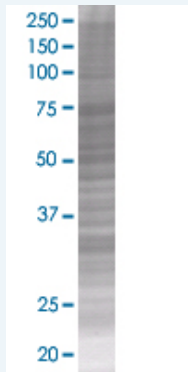
Western Blot



Lane 1: KCNMB2 transfected lysate (27.1 KDa)

Lane 2: Non-transfected lysate.

SDS-PAGE Gel



KCNMB2 transfected lysate.

Storage Buffer: 1X Sample Buffer (50 mM Tris-HCl, 2% SDS, 10% glycerol, 300 mM 2-mercaptoethanol, 0.01% Bromophenol blue)

Storage Instruction: Store at -80°C. Aliquot to avoid repeated freezing and thawing.

MSDS:  [Download](#)

Applications

Application Image

Western Blot

Western Blot

Gene Information

Entrez GeneID: [10242](#)

GeneBank Accession#: [NM_005832](#)

Protein Accession#: [NP_005823](#)

Gene Name: KCNMB2

Gene Alias: MGC22431

Gene Description: potassium large conductance calcium-activated channel, subfamily M, beta member 2

Omim ID: [605214](#)

Gene Ontology: [Hyperlink](#)

Gene Summary: MaxiK channels are large conductance, voltage and calcium-sensitive potassium channels which are fundamental to the control of smooth muscle tone and neuronal excitability. MaxiK channels can be formed by 2 subunits: the pore-forming alpha subunit and the modulatory beta subunit. The protein encoded by this gene is an auxiliary beta subunit which decreases the activation time of MaxiK alpha subunit currents. Two variants encoding the same protein have been found for this gene. [provided by RefSeq]

Other Designations: MaxiK channel beta 2 subunit, calcium-activated potassium channel beta 2 subunit, large conductance calcium-activated potassium channel beta 2 subunit, large-conductance Ca²⁺-activated K⁺ channel beta2 subunit

Gene Pathway

[Vascular smooth muscle contraction](#)

[服務條款](#) | [隱私權政策](#) | [著作及商標](#) | [網站地圖](#)

©2016 亞諾法生技股份有限公司 Abnova Corporation. 版權所有.