



SZABO SCANDIC

Part of Europa Biosite

Produktinformation



Forschungsprodukte & Biochemikalien



Zellkultur & Verbrauchsmaterial



Diagnostik & molekulare Diagnostik



Laborgeräte & Service

Weitere Information auf den folgenden Seiten!
See the following pages for more information!



Lieferung & Zahlungsart

siehe unsere [Liefer- und Versandbedingungen](#)

Zuschläge

- Mindermengenzuschlag
- Trockeneiszuschlag
- Gefahrgutzuschlag
- Expressversand

SZABO-SCANDIC HandelsgmbH

Quellenstraße 110, A-1100 Wien

T. +43(0)1 489 3961-0

F. +43(0)1 489 3961-7

mail@szabo-scandic.com

www.szabo-scandic.com

[linkedin.com/company/szaboscandic](https://www.linkedin.com/company/szaboscandic) 

SPRY1 purified MaxPab mouse polyclonal antibody (B01P) MaxPab®

Catalog # : H00010252-B01P

規格 : [50 ug]

[List All](#)

Specification

Product Description: Mouse polyclonal antibody raised against a full-length human SPRY1 protein.

Immunogen: SPRY1 (NP_005832.1, 1 a.a. ~ 319 a.a) full-length human protein.

Sequence:
 MDPQNHGSGSSLVVIQQPSLDSRQRLDYEREIQPTAILSLDQIKAIRGS
 NEYTEGPSVVKRPAPRTAPRQEKHERTHEIIPINVNNNYEHRHTSHLGHAV
 LPSNARGPILSRSTSTGSAASSGNSASSASSEQLLGRSPPTRPVPGHRS
 ERAIRTQPKQLIVDDLKGSLKEDLTQHKFICEQCGKCKCGECTAPRTLPS
 CLACNRQCLCSAESMVEYGTCLMCLVKGIFYHCSNDDEGDSYSDNPCSC
 SQSHCCSRYLCMGAMSLFLPCLLCYPPAKGCLKLCRRCYDWIHRPGCR
 CKNSNTVYCKLESCPSRGQKPS

Host: Mouse

Reactivity: Human

Quality Control Testing: Antibody reactive against mammalian transfected lysate.

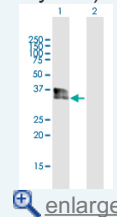
Storage Buffer: In 1x PBS, pH 7.4


Storage Instruction: Store at -20°C or lower. Aliquot to avoid repeated freezing and thawing.

Datasheet:  [Download](#)

Application Image

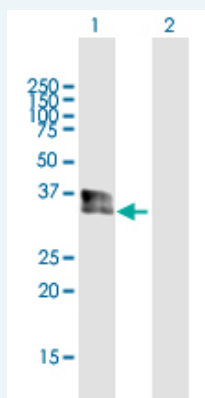
Western Blot (Transfected lysate)



 [enlarge](#)

Applications


Western Blot (Transfected lysate)



Western Blot analysis of SPRY1 expression in transfected 293T cell line ([H00010252-T01](#)) by SPRY1 MaxPab polyclonal antibody.

Lane 1: SPRY1 transfected lysate(35.09 KDa).

Lane 2: Non-transfected lysate.

 [Protocol Download](#)

Gene Information

Entrez GeneID: [10252](#)

GeneBank Accession#: [NM_005841.1](#)

Protein Accession#: [NP_005832.1](#)

Gene Name: SPRY1

Gene Alias: hSPRY1

Gene Description: sprouty homolog 1, antagonist of FGF signaling (Drosophila)

Omim ID: [602465](#)

Gene Ontology: [Hyperlink](#)

Other Designations: sprouty homolog 1, antagonist of FGF signaling, sprouty, Drosophila, homolog of, 1 (antagonist of FGF signaling)

Gene Pathway

[Jak-STAT signaling pathway](#)

Related Disease

[Genetic Predisposition to Disease Neurofibromatosis Neurofibromatosis 1 Ovarian Neoplasms Syndrome](#)