



# SZABO SCANDIC

Part of Europa Biosite

## Produktinformation



Forschungsprodukte & Biochemikalien



Zellkultur & Verbrauchsmaterial



Diagnostik & molekulare Diagnostik



Laborgeräte & Service

Weitere Information auf den folgenden Seiten!  
See the following pages for more information!



### Lieferung & Zahlungsart

siehe unsere [Liefer- und Versandbedingungen](#)

### Zuschläge

- Mindermengenzuschlag
- Trockeneiszuschlag
- Gefahrgutzuschlag
- Expressversand

### SZABO-SCANDIC HandelsgmbH

Quellenstraße 110, A-1100 Wien

T. +43(0)1 489 3961-0

F. +43(0)1 489 3961-7

[mail@szabo-scandic.com](mailto:mail@szabo-scandic.com)

[www.szabo-scandic.com](http://www.szabo-scandic.com)

[linkedin.com/company/szaboscandic](https://www.linkedin.com/company/szaboscandic) 

**SPRY1 purified MaxPab rabbit polyclonal antibody (D01P)** MaxPab®

Catalog # : H00010252-D01P

規格 : [ 100 ug ]

[List All](#)

**Specification**

**Product Description:** Rabbit polyclonal antibody raised against a full-length human SPRY1 protein.

**Immunogen:** SPRY1 (NP\_005832.1, 1 a.a. ~ 319 a.a) full-length human protein.

**Sequence:**  
 MDPQNHGSGSSLVVIQQPSLDSRQRLDYEREIQPTAILSLDQIKAIRGS  
 NEYTEGPSVVKRPAPRTAPRQEKHERTHEIIPINVNNNYEHRHTSHLGHAV  
 LPSNARGPILSRSTSTGSAASSGSNSSASSEQGLLGRSPPTRPVPGHRS  
 ERAIRTQPKQLVDDLKGSLEKDLTQHKFICEQCGKCKGECTAPRTLPS  
 CLACNRQCLCSAESMVEYGTCLMCLVKGIFYHCSNDDEGDSYSDNPCSC  
 SQSHCCSRYLCMGAMSLFLPCLLCYPPAKGCLKLCRRCYDWIHRPGCR  
 CKNSNTVYCKLESCPSRGQGKPS

**Host:** Rabbit

**Reactivity:** Human

**Quality Control Testing:** Antibody reactive against mammalian transfected lysate.

**Storage Buffer:** In 1x PBS, pH 7.4

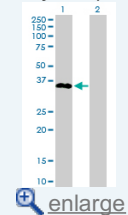
**Storage Instruction:** Store at -20°C or lower. Aliquot to avoid repeated freezing and thawing.

**MSDS:** [Download](#)

**Datasheet:** [Download](#)

**Application Image**

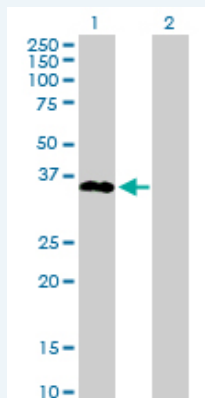
Western Blot (Transfected lysate)



[enlarge](#)

**Applications**

**Western Blot (Transfected lysate)**



Western Blot analysis of SPRY1 expression in transfected 293T cell line ([H00010252-T02](#)) by SPRY1 MaxPab polyclonal antibody.

Lane 1: SPRY1 transfected lysate(35.10 KDa).

Lane 2: Non-transfected lysate.

[Protocol Download](#)

## Gene Information

---

**Entrez GeneID:** [10252](#)

---

**GeneBank  
Accession#:** [NM\\_005841](#)

---

**Protein  
Accession#:** [NP\\_005832.1](#)

---

**Gene Name:** [SPRY1](#)

---

**Gene Alias:** [hSPRY1](#)

---

**Gene  
Description:** [sprouty homolog 1, antagonist of FGF signaling \(Drosophila\)](#)

---

**Omim ID:** [602465](#)

---

**Gene Ontology:** [Hyperlink](#)

---

**Other  
Designations:** [sprouty homolog 1, antagonist of FGF signaling,sprouty, Drosophila, homolog of, 1 \(antagonist of FGF signaling\)](#)

---

## Gene Pathway

---

[Jak-STAT signaling pathway](#)

## Related Disease

---

[Genetic Predisposition to Disease Neurofibromatosis Neurofibromatosis 1](#)  
[Ovarian Neoplasms Syndrome](#)

---

[服務條款](#) | [隱私權政策](#) | [著作及商標](#) | [網站地圖](#)

©2016 亞諾法生技股份有限公司 Abnova Corporation. 版權所有.