



# SZABO SCANDIC

Part of Europa Biosite

## Produktinformation



Forschungsprodukte & Biochemikalien



Zellkultur & Verbrauchsmaterial



Diagnostik & molekulare Diagnostik



Laborgeräte & Service

Weitere Information auf den folgenden Seiten!  
See the following pages for more information!



### Lieferung & Zahlungsart

siehe unsere [Liefer- und Versandbedingungen](#)

### Zuschläge

- Mindermengenzuschlag
- Trockeneiszuschlag
- Gefahrgutzuschlag
- Expressversand

### SZABO-SCANDIC HandelsgmbH

Quellenstraße 110, A-1100 Wien

T. +43(0)1 489 3961-0

F. +43(0)1 489 3961-7

[mail@szabo-scandic.com](mailto:mail@szabo-scandic.com)

[www.szabo-scandic.com](http://www.szabo-scandic.com)

[linkedin.com/company/szaboscandic](https://www.linkedin.com/company/szaboscandic) 

## SPRY1 monoclonal antibody (M01), clone 3H4

Catalog # : H00010252-M01

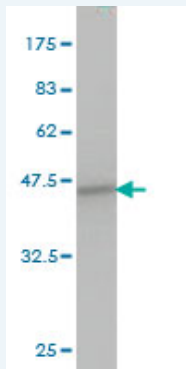
規格 : [ 100 ug ]

[List All](#)

### Specification

<b>Product Description:</b>	Mouse monoclonal antibody raised against a partial recombinant SPRY1.
<b>Immunogen:</b>	SPRY1 (NP_005832, 1 a.a. ~ 110 a.a) partial recombinant protein with GST tag. MW of the GST tag alone is 26 KDa.
<b>Sequence:</b>	MDPQNQHSGSSLVVIQQPSLDSRQRLDYEREIQPTAILSLDQIKAIRGS NEYTEGPSVVKRPAPRTAPRQEKHERTHEIIPINVNNNYEHRHTSHLGHAV LPSNARGPI
<b>Host:</b>	Mouse
<b>Reactivity:</b>	Human
<b>Isotype:</b>	IgG2a Kappa

**Quality Control Testing:** Antibody Reactive Against Recombinant Protein.



Western Blot detection against Immunogen (37.84 KDa) .

**Storage Buffer:** In 1x PBS, pH 7.4

**Storage Instruction:** Store at -20°C or lower. Aliquot to avoid repeated freezing and thawing.

**MSDS:** [Download](#)

**Datasheet:** [Download](#)

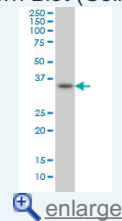
### Publication Reference

- [Human Sprouty1 suppresses growth, migration, and invasion in human breast cancer cells.](#)  
Mekkawy AH, Pourgholami MH, Morris DL. *Tumour Biol.* 2014 Feb 8.
- [Initial Report on Differential Expression of Sprouty Proteins 1 and 2 in Human Epithelial Ovarian Cancer Cell Lines.](#)  
Moghaddam SM, Amini A, Wei AQ, Pourgholami MH, Morris DL. *J Oncol.* 2012;2012:373826. doi: 10.1155/2012/373826. Epub 2012 Nov 29.

### Applications

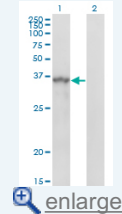
### Application Image

Western Blot (Cell lysate)



[enlarge](#)

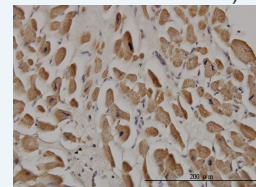
Western Blot (Transfected lysate)



[enlarge](#)

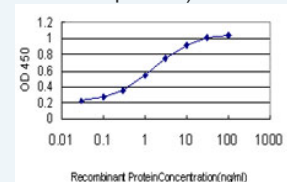
Western Blot (Recombinant protein)

Immunohistochemistry (Formalin/PFA-fixed paraffin-embedded sections)



[enlarge](#)

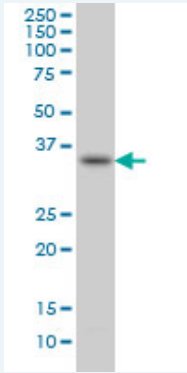
Sandwich ELISA (Recombinant protein)



[enlarge](#)

ELISA

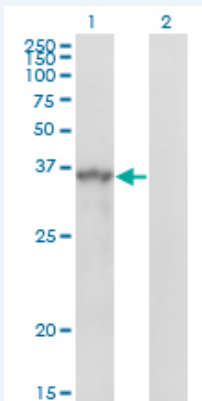
### Western Blot (Cell lysate)



SPRY1 monoclonal antibody (M01), clone 3H4 Western Blot analysis of SPRY1 expression in HepG2 ( Cat # L019V1 ).

 [Protocol Download](#)


### Western Blot (Transfected lysate)




Western Blot analysis of SPRY1 expression in transfected 293T cell line by SPRY1 monoclonal antibody (M01), clone 3H4.

Lane 1: SPRY1 transfected lysate(35.1 KDa).

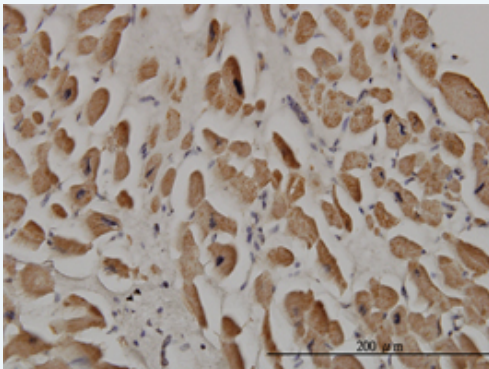
Lane 2: Non-transfected lysate.


 [Protocol Download](#)

### Western Blot (Recombinant protein)

 [Protocol Download](#)

### Immunohistochemistry (Formalin/PFA-fixed paraffin-embedded sections)

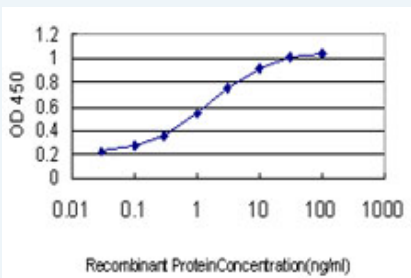


 [enlarge this image](#)

Immunoperoxidase of monoclonal antibody to SPRY1 on formalin-fixed paraffin-embedded human heart. [antibody concentration 3 ug/ml]

 [Protocol Download](#)

### Sandwich ELISA (Recombinant protein)



Detection limit for recombinant GST tagged SPRY1 is approximately 0.03ng/ml as a capture antibody.

 [Protocol Download](#)

## ELISA

### Gene Information

**Entrez GeneID:** [10252](#)

**GeneBank** [NM\\_005841](#)

**Accession#:**

**Protein** [NP\\_005832](#)

**Accession#:**

**Gene Name:** SPRY1

**Gene Alias:** hSPRY1

**Gene Description:** sprouty homolog 1, antagonist of FGF signaling (Drosophila)

**Omim ID:** [602465](#)

**Gene Ontology:** [Hyperlink](#)

**Other Designations:** sprouty homolog 1, antagonist of FGF signaling, sprouty, Drosophila, homolog of, 1 (antagonist of FGF signaling)

### Gene Pathway

[Jak-STAT signaling pathway](#)

### Related Disease

[Genetic Predisposition to Disease Neurofibromatosis Neurofibromatosis 1](#)

[Ovarian Neoplasms Syndrome](#)

[服務條款](#) | [隱私權政策](#) | [著作及商標](#) | [網站地圖](#)

©2016 亞諾法生技股份有限公司 Abnova Corporation. 版權所有.