



SZABO SCANDIC

Part of Europa Biosite

Produktinformation



Forschungsprodukte & Biochemikalien



Zellkultur & Verbrauchsmaterial



Diagnostik & molekulare Diagnostik



Laborgeräte & Service

Weitere Information auf den folgenden Seiten!
See the following pages for more information!



Lieferung & Zahlungsart

siehe unsere [Liefer- und Versandbedingungen](#)

Zuschläge

- Mindermengenzuschlag
- Trockeneiszuschlag
- Gefahrgutzuschlag
- Expressversand

SZABO-SCANDIC HandelsgmbH

Quellenstraße 110, A-1100 Wien

T. +43(0)1 489 3961-0

F. +43(0)1 489 3961-7

mail@szabo-scandic.com

www.szabo-scandic.com

[linkedin.com/company/szaboscandic](https://www.linkedin.com/company/szaboscandic) 

SPRY1 monoclonal antibody (M02), clone 2F1

Catalog # : H00010252-M02

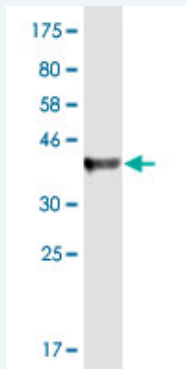
規格 : [100 ug]

List All

Specification

Product Description:	Mouse monoclonal antibody raised against a partial recombinant SPRY1.
Immunogen:	SPRY1 (NP_005832, 1 a.a. ~ 110 a.a) partial recombinant protein with GST tag. MW of the GST tag alone is 26 KDa.
Sequence:	MDPQNQHGGSSLVVIQQPSLDSRQRLDYEREIQPTAILSLDQIKAIRGS NEYTEGPSVVKRPAPRTAPRQEKHRTHEIIPINNNNYEHRHTSHLGHAV LPSNARGPI
Host:	Mouse
Reactivity:	Human
Isotype:	IgG2a Kappa

Quality Control Testing: Antibody Reactive Against Recombinant Protein.



Western Blot detection against Immunogen (37.84 KDa) .

Storage Buffer: In 1x PBS, pH 7.4

Storage Instruction: Store at -20°C or lower. Aliquot to avoid repeated freezing and thawing.

MSDS: [Download](#)

Datasheet: [Download](#)

Applications

Western Blot (Transfected lysate)

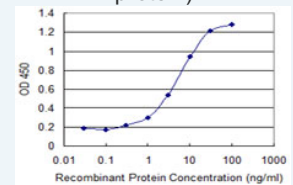
Application Image

Western Blot (Transfected lysate)



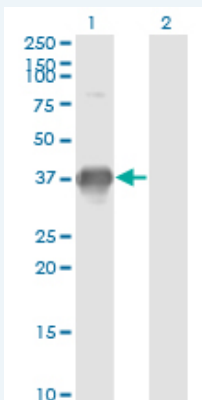
Western Blot (Recombinant protein)

Sandwich ELISA (Recombinant protein)



[enlarge](#)

ELISA



Western Blot analysis of SPRY1 expression in transfected 293T cell line by SPRY1 monoclonal antibody (M02), clone 2F1.

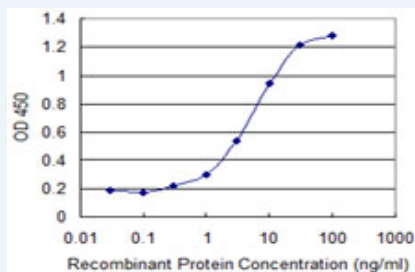
Lane 1: SPRY1 transfected lysate(35.1 KDa).
Lane 2: Non-transfected lysate.

[Protocol Download](#)

Western Blot (Recombinant protein)

[Protocol Download](#)

Sandwich ELISA (Recombinant protein)



Detection limit for recombinant GST tagged SPRY1 is 0.1 ng/ml as a capture antibody.

[Protocol Download](#)

ELISA

Gene Information

Entrez GeneID: [10252](#)

GeneBank [NM_005841](#)

Accession#:

Protein [NP_005832](#)

Accession#:

Gene Name: SPRY1

Gene Alias: hSPRY1

Gene Description: sprouty homolog 1, antagonist of FGF signaling (Drosophila)

Omim ID: [602465](#)

Gene Ontology: [Hyperlink](#)

Other Designations: sprouty homolog 1, antagonist of FGF signaling, sprouty, Drosophila, homolog of, 1 (antagonist of FGF signaling)

Gene Pathway

[Jak-STAT signaling pathway](#)

Related Disease

[Genetic Predisposition to Disease](#) [Neurofibromatosis](#) [Neurofibromatosis 1](#)
[Ovarian Neoplasms Syndrome](#)

[服務條款](#) | [隱私權政策](#) | [著作及商標](#) | [網站地圖](#)

©2016 亞諾法生技股份有限公司 Abnova Corporation. 版權所有.