



# SZABO SCANDIC

Part of Europa Biosite

## Produktinformation



Forschungsprodukte & Biochemikalien



Zellkultur & Verbrauchsmaterial



Diagnostik & molekulare Diagnostik



Laborgeräte & Service

Weitere Information auf den folgenden Seiten!  
See the following pages for more information!



### Lieferung & Zahlungsart

siehe unsere [Liefer- und Versandbedingungen](#)

### Zuschläge

- Mindermengenzuschlag
- Trockeneiszuschlag
- Gefahrgutzuschlag
- Expressversand

### SZABO-SCANDIC HandelsgmbH

Quellenstraße 110, A-1100 Wien

T. +43(0)1 489 3961-0

F. +43(0)1 489 3961-7

[mail@szabo-scandic.com](mailto:mail@szabo-scandic.com)

[www.szabo-scandic.com](http://www.szabo-scandic.com)

[linkedin.com/company/szaboscandic](https://www.linkedin.com/company/szaboscandic) 

## SPRY2 polyclonal antibody (A01)

Catalog # : H00010253-A01

規格 : [ 50 uL ]

List All

### Specification

**Product Description:** Mouse polyclonal antibody raised against a full-length recombinant SPRY2.

**Immunogen:** SPRY2 (AAH15745.1, 1 a.a. ~ 315 a.a) full-length recombinant protein with GST tag.

**Sequence:** MEARAQSGNGSQPLLQTPRDGGRQQRGEPDPRDAL TQQVHVL SLDQIR AIRNTNEYTEGPTVWPRPGLKPAPRPSTQHKHERLHGLPEHRQPPRLQH SQVHSSARAPLSRSISTVSSGSRSTRSTSSSSSEQRLLGSSFSSGPV ADGIIRVQPKSELKPGELKPLSKEDLGLHAYRCEDCGKCKCECTYPRPL PSDWICKQCLCSAQNVIDYGTCCVCKGLFYHCSNDDDEDNCADNPCS CSQSHCCTRWSAMGVMSLFLPCLWCYLPKAGCLKCQGCYDRVNRPG CRCKNSNTVCCKVPTVPPRNFEKPT

**Host:** Mouse

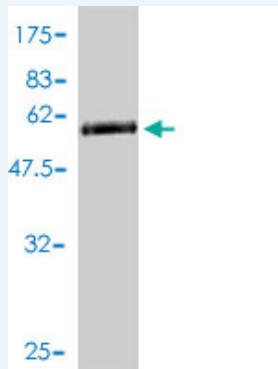
**Reactivity:** Human

### Application Image

Western Blot (Recombinant protein)

ELISA

**Quality Control Testing:** Antibody Reactive Against Recombinant Protein.



Western Blot detection against Immunogen (60.76 KDa) .

**Storage Buffer:** 50 % glycerol

**Storage Instruction:** Store at -20°C or lower. Aliquot to avoid repeated freezing and thawing.

**MSDS:** [Download](#)

**Datasheet:** [Download](#)

### Applications

Western Blot (Recombinant protein)

[Protocol Download](#)

ELISA

### Gene Information

Entrez GeneID: [10253](#)

GeneBank  
Accession#: [BC015745](#)

Protein  
Accession#: [AAH15745.1](#)

Gene Name: [SPRY2](#)

Gene Alias: [MGC23039,hSPRY2](#)

Gene  
Description: [sprouty homolog 2 \(Drosophila\)](#)

Omim ID: [602466](#)

Gene Ontology: [Hyperlink](#)

**Gene Summary:** This gene encodes a protein belonging to the sprouty family. The encoded protein contains a carboxyl-terminal cysteine-rich domain essential for the inhibitory activity on receptor tyrosine kinase signaling proteins and is required for growth factor stimulated translocation of the protein to membrane ruffles. In primary dermal endothelial cells this gene is transiently upregulated in response to fibroblast growth factor two. This protein is indirectly involved in the non-cell autonomous inhibitory effect on fibroblast growth factor two signaling. The protein interacts with Cas-Br-M (murine) ectropic retroviral transforming sequence, and can function as a bimodal regulator of epidermal growth factor receptor/mitogen-activated protein kinase signaling. This protein may play a role in alveoli branching during lung development as shown by a similar mouse protein. [provided by RefSeq]

Other  
Designations: [OTTHUMP00000018543,OTTHUMP00000018544,sprouty 2](#)

#### Gene Pathway

[Jak-STAT signaling pathway](#)

#### Related Disease

[Cleft Lip Cleft Palate Genetic Predisposition to Disease](#) [Intestinal Diseases](#)  
[Kidney Failure](#), [Chronic Neurofibromatosis](#) [Neurofibromatosis 1 Syndrome](#)