



# SZABO SCANDIC

Part of Europa Biosite

## Produktinformation



Forschungsprodukte & Biochemikalien



Zellkultur & Verbrauchsmaterial



Diagnostik & molekulare Diagnostik



Laborgeräte & Service

Weitere Information auf den folgenden Seiten!  
See the following pages for more information!



### Lieferung & Zahlungsart

siehe unsere [Liefer- und Versandbedingungen](#)

### Zuschläge

- Mindermengenzuschlag
- Trockeneiszuschlag
- Gefahrgutzuschlag
- Expressversand

### SZABO-SCANDIC HandelsgmbH

Quellenstraße 110, A-1100 Wien

T. +43(0)1 489 3961-0

F. +43(0)1 489 3961-7

[mail@szabo-scandic.com](mailto:mail@szabo-scandic.com)

[www.szabo-scandic.com](http://www.szabo-scandic.com)



[linkedin.com/company/szaboscandic](https://www.linkedin.com/company/szaboscandic) 

**IGSF6 purified MaxPab mouse polyclonal antibody (B01P)** MaxPab®

Catalog # : H00010261-B01P

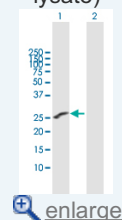
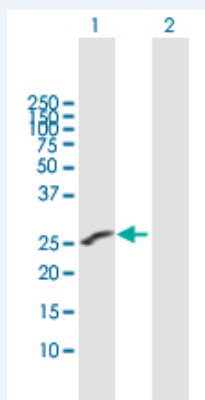
規格 : [ 50 ug ]

[List All](#)
**Specification**

|                                 |  |
|---------------------------------|--|
| <b>Product Description:</b>     | Mouse polyclonal antibody raised against a full-length human IGSF6 protein.  |
| <b>Immunogen:</b>               | IGSF6 (AAH17844, 1 a.a. ~ 241 a.a) full-length human protein.  |
| <b>Sequence:</b>                | MGTASRSNIARHLQTNLILFCVAVGACTLSVTQPWYLEVDYTHEAVTIK<br>CTFSATGCPSEQPTCLWFRYGAHRPENLCLDGCKSEADKFTVREALKE<br>NQVSLTVNRVTSNDSAIYICGIAFPSVPEARAKQTGGGTTLVVREIKLLSK<br>ELRSFLTALVSLLSVYVTGVCVAFILLSKSKSNPLRNKKIKEDSQKKKSAR<br>RIFQEIAQELYHKRHVETNQQSEKDNNTYENRRVLSNYERP |
| <b>Host:</b>                    | Mouse  |
| <b>Reactivity:</b>              | Human  |
| <b>Quality Control Testing:</b> | Antibody reactive against mammalian transfected lysate.  |
| <b>Storage Buffer:</b>          | In 1x PBS, pH 7.4  |
| <b>Storage Instruction:</b>     | Store at -20°C or lower. Aliquot to avoid repeated freezing and thawing.   |
| <b>MSDS:</b>                    |  <a href="#">Download</a>   |
| <b>Datasheet:</b>               |  <a href="#">Download</a>   |

**Application Image**


Western Blot (Transfected lysate)


 [enlarge](#)
**Applications**
**Western Blot (Transfected lysate)**


Western Blot analysis of IGSF6 expression in transfected 293T cell line (H00010261-T01) by IGSF6 MaxPab polyclonal antibody.

Lane 1: IGSF6 transfected lysate(26.51 KDa).

Lane 2: Non-transfected lysate.

 [Protocol Download](#)
**Gene Information**

**Entrez GeneID:** [10261](#)

**GeneBank  
Accession#:** [BC017844](#)

**Protein  
Accession#:** [AAH17844](#)

**Gene Name:** IGSF6

**Gene Alias:** DORA

**Gene  
Description:** immunoglobulin superfamily, member 6

**Omim ID:** [606222](#)

**Gene Ontology:** [Hyperlink](#)

**Other  
Designations:** down-regulated by activation (immunoglobulin superfamily)

#### **Related Disease**

[Colitis, Ulcerative](#) [Crohn Disease](#) [Crohn's disease](#) [Genetic Predisposition to Disease](#)  
[Inflammatory Bowel Diseases](#)

[服務條款](#) | [隱私權政策](#) | [著作及商標](#) | [網站地圖](#)

©2016 亞諾法生技股份有限公司 Abnova Corporation. 版權所有.