



SZABO SCANDIC

Part of Europa Biosite

Produktinformation



Forschungsprodukte & Biochemikalien



Zellkultur & Verbrauchsmaterial



Diagnostik & molekulare Diagnostik



Laborgeräte & Service

Weitere Information auf den folgenden Seiten!
See the following pages for more information!



Lieferung & Zahlungsart

siehe unsere [Liefer- und Versandbedingungen](#)

Zuschläge

- Mindermengenzuschlag
- Trockeneiszuschlag
- Gefahrgutzuschlag
- Expressversand

SZABO-SCANDIC HandelsgmbH

Quellenstraße 110, A-1100 Wien

T. +43(0)1 489 3961-0

F. +43(0)1 489 3961-7

mail@szabo-scandic.com

www.szabo-scandic.com

[linkedin.com/company/szaboscandic](https://www.linkedin.com/company/szaboscandic) 

IGSF6 purified MaxPab rabbit polyclonal antibody (D01P) MaxPab®

Catalog # : H00010261-D01P

規格 : [100 ug]

[List All](#)

Specification

Product Description: Rabbit polyclonal antibody raised against a full-length human IGSF6 protein.

Immunogen: IGSF6 (AAH17844.1, 1 a.a. ~ 241 a.a) full-length human protein.

Sequence:
 MGTASRSNIARHLQTNLILFCVGAVGACTLSVTQPWYLEVDYTHEAVTIK
 CTFSATGCPSEQPTCLWFRYGAHRPENLCLDGCKSEADKFTVREALKE
 NQVSLTVNRVTSNDSAIYICGIAFPSVPEARAKQTGGGTTLVREIKLLSK
 ELRSFLTALVSLLSVYVTGVCVAFILLSKSKSNPLRNKKIKEDSQKKKSAR
 RIFQEIAQELYHKRHVETNQQSEKDNNTYENRRVLSNYERP

Host: Rabbit

Reactivity: Human

Quality Control Testing: Antibody reactive against mammalian transfected lysate.

Storage Buffer: In 1x PBS, pH 7.4

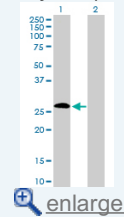
Storage Instruction: Store at -20°C or lower. Aliquot to avoid repeated freezing and thawing.

MSDS:  [Download](#)

Datasheet:  [Download](#)

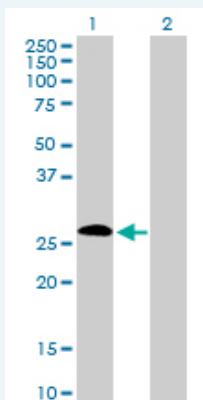
Application Image

Western Blot (Transfected lysate)



Applications

Western Blot (Transfected lysate)



Western Blot analysis of IGSF6 expression in transfected 293T cell line ([H00010261-T02](#)) by IGSF6 MaxPab polyclonal antibody.

Lane 1: IGSF6 transfected lysate(27.00 KDa).

Lane 2: Non-transfected lysate.

 [Protocol Download](#)

Gene Information

Entrez GeneID: [10261](#)

**GeneBank
Accession#:** [BC017844](#)

**Protein
Accession#:** [AAH17844.1](#)

Gene Name: IGSF6

Gene Alias: DORA

**Gene
Description:** immunoglobulin superfamily, member 6

Omim ID: [606222](#)

Gene Ontology: [Hyperlink](#)

**Other
Designations:** down-regulated by activation (immunoglobulin superfamily)

Related Disease

[Colitis, Ulcerative](#) [Crohn Disease](#) [Crohn's disease](#) [Genetic Predisposition to Disease](#)
[Inflammatory Bowel Diseases](#)

[服務條款](#) | [隱私權政策](#) | [著作及商標](#) | [網站地圖](#)

©2016 亞諾法生技股份有限公司 Abnova Corporation. 版權所有.