



# SZABO SCANDIC

Part of Europa Biosite

## Produktinformation



Forschungsprodukte & Biochemikalien



Zellkultur & Verbrauchsmaterial



Diagnostik & molekulare Diagnostik



Laborgeräte & Service

Weitere Information auf den folgenden Seiten!  
See the following pages for more information!



### Lieferung & Zahlungsart

siehe unsere [Liefer- und Versandbedingungen](#)

### Zuschläge

- Mindermengenzuschlag
- Trockeneiszuschlag
- Gefahrgutzuschlag
- Expressversand

### SZABO-SCANDIC HandelsgmbH

Quellenstraße 110, A-1100 Wien

T. +43(0)1 489 3961-0

F. +43(0)1 489 3961-7

[mail@szabo-scandic.com](mailto:mail@szabo-scandic.com)

[www.szabo-scandic.com](http://www.szabo-scandic.com)

[linkedin.com/company/szaboscandic](https://www.linkedin.com/company/szaboscandic) 

## IGSF6 monoclonal antibody (M01), clone 2A12

Catalog # : H00010261-M01

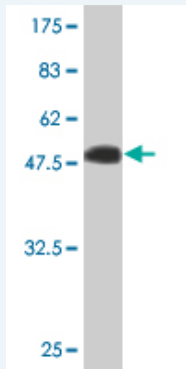
規格 : [ 100 ug ]

[List All](#)

### Specification

<b>Product Description:</b>	Mouse monoclonal antibody raised against a full length recombinant IGSF6.
<b>Immunogen:</b>	IGSF6 (AAH17844.1, 29 a.a. ~ 241 a.a) full-length recombinant protein with GST tag. MW of the GST tag alone is 26 KDa.
<b>Sequence:</b>	<p>           TLSVTQPWYLEVDYTHEAVTIKCTFSATGCPSEQPTCLWFRYGAHRPE            NLCLDGCKSEADKFTVREALKENQVSLTVNRVTSNDSAIMICGIAFPSVPE            ARAKQTGGGTLLVREIKLLSKELRNFLTALVSLLSVYVTGVCVAFILLSK            SKSNPLRNKKIKEDSQKKKSARRIFQEIAQELYHKRHVETNQQSEKDNT            YENRRVLSNYERP         </p>
<b>Host:</b>	Mouse
<b>Reactivity:</b>	Human
<b>Isotype:</b>	IgG1 Kappa

**Quality Control Testing:** Antibody Reactive Against Recombinant Protein.



Western Blot detection against Immunogen (49.17 KDa) .

**Storage Buffer:** In 1x PBS, pH 7.4

**Storage Instruction:** Store at -20°C or lower. Aliquot to avoid repeated freezing and thawing.

**MSDS:** [Download](#)

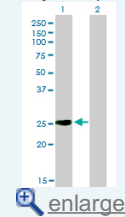
**Datasheet:** [Download](#)

### Applications

**Western Blot (Transfected lysate)**

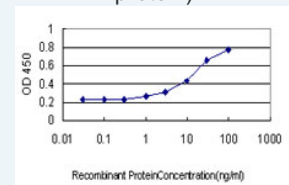
### Application Image

Western Blot (Transfected lysate)



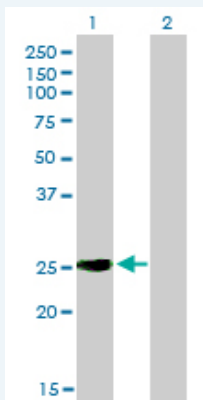
Western Blot (Recombinant protein)

Sandwich ELISA (Recombinant protein)



[enlarge](#)

ELISA



Western Blot analysis of IGSF6 expression in transfected 293T cell line by IGSF6 monoclonal antibody (M01), clone 2A12.

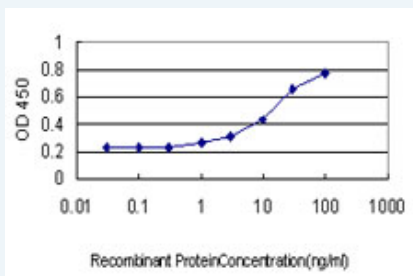
Lane 1: IGSF6 transfected lysate(27 KDa).  
Lane 2: Non-transfected lysate.

[Protocol Download](#)

### Western Blot (Recombinant protein)

[Protocol Download](#)

### Sandwich ELISA (Recombinant protein)



Detection limit for recombinant GST tagged IGSF6 is approximately 1ng/ml as a capture antibody.

[Protocol Download](#)

### ELISA

### Gene Information

Entrez GeneID: [10261](#)

GeneBank Accession#: [BC017844](#)

Protein Accession#: [AAH17844.1](#)

Gene Name: IGSF6

Gene Alias: DORA

Gene Description: immunoglobulin superfamily, member 6

Omim ID: [606222](#)

Gene Ontology: [Hyperlink](#)

Other Designations: down-regulated by activation (immunoglobulin superfamily)

### Related Disease

---

[服務條款](#) | [隱私權政策](#) | [著作及商標](#) | [網站地圖](#)

©2016 亞諾法生技股份有限公司 Abnova Corporation. 版權所有.