



SZABO SCANDIC

Part of Europa Biosite

Produktinformation



Forschungsprodukte & Biochemikalien



Zellkultur & Verbrauchsmaterial



Diagnostik & molekulare Diagnostik



Laborgeräte & Service

Weitere Information auf den folgenden Seiten!
See the following pages for more information!



Lieferung & Zahlungsart

siehe unsere [Liefer- und Versandbedingungen](#)

Zuschläge

- Mindermengenzuschlag
- Trockeneiszuschlag
- Gefahrgutzuschlag
- Expressversand

SZABO-SCANDIC HandelsgmbH

Quellenstraße 110, A-1100 Wien

T. +43(0)1 489 3961-0

F. +43(0)1 489 3961-7

mail@szabo-scandic.com

www.szabo-scandic.com

[linkedin.com/company/szaboscandic](https://www.linkedin.com/company/szaboscandic)

IGSF6 monoclonal antibody (M02), clone 1A10

Catalog # : H00010261-M02

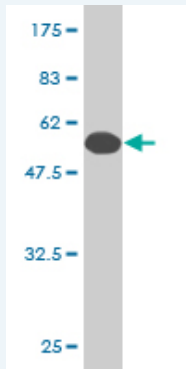
規格 : [100 ug]

[List All](#)

Specification

Product Description:	Mouse monoclonal antibody raised against a full-length recombinant IGSF6.
Immunogen:	IGSF6 (AAH17844.1, 29 a.a. ~ 241 a.a) full-length recombinant protein with GST tag. MW of the GST tag alone is 26 KDa.
Sequence:	<p> TLSVTQPWYLEVDYTHEAVTIKCTFSATGCPSEQPTCLWFRYGAHRPE NLCLDGCKSEADKFTVREALKENQVSLTVNRVTSNDSAIMICGIAFPSVPE ARAKQTGGGTLLVREIKLLSKELRNFLTALVSLLSVYVTGVCVAFILLSK SKSNPLRNKKIKEDSQKKKSARRIFQEIAQELYHKRHVETNQQSEKDNNT YENRRVLSNYERP </p>
Host:	Mouse
Reactivity:	Human
Isotype:	IgG1 Kappa

Quality Control Testing: Antibody Reactive Against Recombinant Protein.



Western Blot detection against Immunogen (49.17 KDa) .

Storage Buffer: In 1x PBS, pH 7.4

Storage Instruction: Store at -20°C or lower. Aliquot to avoid repeated freezing and thawing.

MSDS: [Download](#)

Datasheet: [Download](#)

Applications

Western Blot (Recombinant protein)

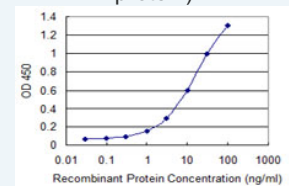
[Protocol Download](#)

Sandwich ELISA (Recombinant protein)

Application Image

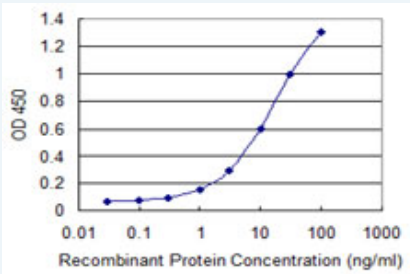
Western Blot (Recombinant protein)

Sandwich ELISA (Recombinant protein)



[enlarge](#)

ELISA



Detection limit for recombinant GST tagged IGSF6 is 0.3 ng/ml as a capture antibody.

 [Protocol Download](#)

ELISA

Gene Information

Entrez GeneID: [10261](#)

GeneBank [BC017844](#)
Accession#:

Protein [AAH17844.1](#)
Accession#:

Gene Name: IGSF6

Gene Alias: DORA

Gene Description: immunoglobulin superfamily, member 6

Omim ID: [606222](#)

Gene Ontology: [Hyperlink](#)

Other Designations: down-regulated by activation (immunoglobulin superfamily)

Related Disease

[Colitis](#), [Ulcerative Crohn Disease](#), [Crohn's disease](#), [Genetic Predisposition to Disease](#), [Inflammatory Bowel Diseases](#)