



SZABO SCANDIC

Part of Europa Biosite

Produktinformation



Forschungsprodukte & Biochemikalien



Zellkultur & Verbrauchsmaterial



Diagnostik & molekulare Diagnostik



Laborgeräte & Service

Weitere Information auf den folgenden Seiten!
See the following pages for more information!



Lieferung & Zahlungsart

siehe unsere [Liefer- und Versandbedingungen](#)

Zuschläge

- Mindermengenzuschlag
- Trockeneiszuschlag
- Gefahrgutzuschlag
- Expressversand

SZABO-SCANDIC HandelsgmbH

Quellenstraße 110, A-1100 Wien

T. +43(0)1 489 3961-0

F. +43(0)1 489 3961-7

mail@szabo-scandic.com

www.szabo-scandic.com

[linkedin.com/company/szaboscandic](https://www.linkedin.com/company/szaboscandic) 

AKAP8 (Human) IP-WB Antibody Pair

Catalog # : H00010270-PW2

規格 : [1 Set]

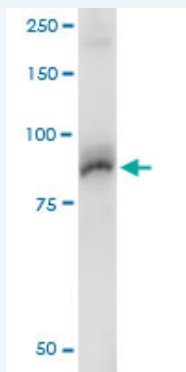
[List All](#)

Specification

Product Description: This IP-WB antibody pair set comes with one antibody for immunoprecipitation and another to detect the precipitated protein in western blot.

Reactivity: Human

Quality Control Testing: Immunoprecipitation-Western Blot (IP-WB)



Immunoprecipitation of AKAP8 transfected lysate using mouse monoclonal anti-AKAP8 and Protein A Magnetic Bead ([U0007](#)), and immunoblotted with mouse monoclonal anti-AKAP8.

Supplied Product: Antibody pair set content:
1. Antibody pair for IP: mouse monoclonal anti-AKAP8 (300 ug)
2. Antibody pair for WB: mouse monoclonal anti-AKAP8 (50 ug)

Storage Instruction: Store reagents of the antibody pair set at -20°C or lower. Please aliquot to avoid repeated freeze thaw cycle. Reagents should be returned to -20°C storage immediately after use.

MSDS:  [Download](#)

Applications

Immunoprecipitation-Western Blot

 [Protocol Download](#)

Gene Information

Entrez GeneID: [10270](#)

Gene Name: AKAP8

Gene Alias: AKAP95,DKFZp586B1222

Gene Description: A kinase (PRKA) anchor protein 8

Omim ID: [604692](#)

Gene Ontology: [Hyperlink](#)

Application Image

Immunoprecipitation-Western Blot

Gene Summary: The A-kinase anchor proteins (AKAPs) are a group of structurally diverse proteins, which have the common function of binding to the regulatory subunit of protein kinase A (PKA) and confining the holoenzyme to discrete locations within the cell. This gene encodes a member of the AKAP family. The encoded protein is located in the nucleus during interphase and is distinctly redistributed during mitosis. This protein has a cell cycle-dependent interaction with the RII subunit of PKA. [provided by RefSeq]

Other Designations: A-kinase anchor protein 8,A-kinase anchor protein, 95kDa

[服務條款](#) | [隱私權政策](#) | [著作及商標](#) | [網站地圖](#)

©2016 亞諾法生技股份有限公司 Abnova Corporation. 版權所有.