



SZABO SCANDIC

Part of Europa Biosite

Produktinformation



Forschungsprodukte & Biochemikalien



Zellkultur & Verbrauchsmaterial



Diagnostik & molekulare Diagnostik



Laborgeräte & Service

Weitere Information auf den folgenden Seiten!
See the following pages for more information!



Lieferung & Zahlungsart

siehe unsere [Liefer- und Versandbedingungen](#)

Zuschläge

- Mindermengenzuschlag
- Trockeneiszuschlag
- Gefahrgutzuschlag
- Expressversand

SZABO-SCANDIC HandelsgmbH

Quellenstraße 110, A-1100 Wien

T. +43(0)1 489 3961-0

F. +43(0)1 489 3961-7

mail@szabo-scandic.com

www.szabo-scandic.com

[linkedin.com/company/szaboscandic](https://www.linkedin.com/company/szaboscandic) 

AKAP8 293T Cell Transient Overexpression Lysate(Denatured)

Catalog # : H00010270-T01

規格 : [100 uL]

[List All](#)

Specification

Transfected Cell Line: 293T

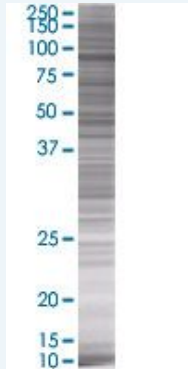
Plasmid: pCMV-AKAP8 full-length

Host: Human

Theoretical MW (kDa): 76.23

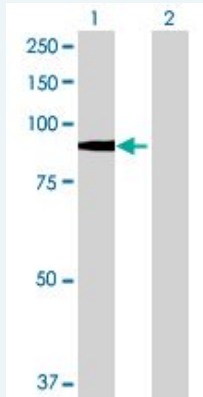
Quality Control Testing: Transient overexpression cell lysate was tested with Anti-AKAP8 antibody ([H00010270-B01](#)) by Western Blots.

SDS-PAGE Gel



AKAP8 transfected lysate.

Western Blot



Lane 1: AKAP8 transfected lysate (76.23 KDa)

Lane 2: Non-transfected lysate.

Storage Buffer: 1X Sample Buffer (50 mM Tris-HCl, 2% SDS, 10% glycerol, 300 mM 2-mercaptoethanol, 0.01% Bromophenol blue)

Storage Instruction: Store at -80°C. Aliquot to avoid repeated freezing and thawing.

MSDS:  [Download](#)

Applications

Application Image

Western Blot

Western Blot

Gene Information

Entrez GeneID: [10270](#)

GeneBank
Accession#: [BC037270](#)

Protein
Accession#: [AAH37270](#)

Gene Name: AKAP8

Gene Alias: AKAP95,DKFZp586B1222

Gene
Description: A kinase (PRKA) anchor protein 8

Omim ID: [604692](#)

Gene Ontology: [Hyperlink](#)

Gene Summary: The A-kinase anchor proteins (AKAPs) are a group of structurally diverse proteins, which have the common function of binding to the regulatory subunit of protein kinase A (PKA) and confining the holoenzyme to discrete locations within the cell. This gene encodes a member of the AKAP family. The encoded protein is located in the nucleus during interphase and is distinctly redistributed during mitosis. This protein has a cell cycle-dependent interaction with the RII subunit of PKA. [provided by RefSeq]

Other
Designations: A-kinase anchor protein 8,A-kinase anchor protein, 95kDa

[服務條款](#) | [隱私權政策](#) | [著作及商標](#) | [網站地圖](#)

©2016 亞諾法生技股份有限公司 Abnova Corporation. 版權所有.