



SZABO SCANDIC

Part of Europa Biosite

Produktinformation



Forschungsprodukte & Biochemikalien



Zellkultur & Verbrauchsmaterial



Diagnostik & molekulare Diagnostik



Laborgeräte & Service

Weitere Information auf den folgenden Seiten!
See the following pages for more information!



Lieferung & Zahlungsart

siehe unsere [Liefer- und Versandbedingungen](#)

Zuschläge

- Mindermengenzuschlag
- Trockeneiszuschlag
- Gefahrgutzuschlag
- Expressversand

SZABO-SCANDIC HandelsgmbH

Quellenstraße 110, A-1100 Wien

T. +43(0)1 489 3961-0

F. +43(0)1 489 3961-7

mail@szabo-scandic.com

www.szabo-scandic.com

[linkedin.com/company/szaboscandic](https://www.linkedin.com/company/szaboscandic) 

STAG1 monoclonal antibody (M01), clone 2E9

Catalog # : H00010274-M01

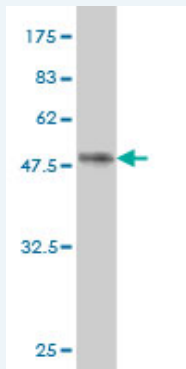
規格 : [100 ug]

[List All](#)

Specification

Product Description:	Mouse monoclonal antibody raised against a partial recombinant STAG1.
Immunogen:	STAG1 (AAH64699, 1112 a.a. ~ 1221 a.a) partial recombinant protein with GST tag. MW of the GST tag alone is 26 KDa.
Sequence:	LPAPQLTSTVLRENSRPMGDQIQEPESEHGSEPDFLHNRGLMEEDAEP FEDVMMSSRSQLEDMNEEFEDTMVIDLPPSRNRRRERAE LRPDFD SAAI EDDSGFGMPMF
Host:	Mouse
Reactivity:	Human
Isotype:	IgG2b Kappa

Quality Control Testing: Antibody Reactive Against Recombinant Protein.



Western Blot detection against Immunogen (37.73 KDa) .

Storage Buffer: In 1x PBS, pH 7.4

Storage Instruction: Store at -20°C or lower. Aliquot to avoid repeated freezing and thawing.

MSDS: [Download](#)

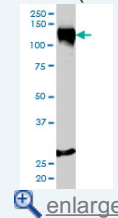
Datasheet: [Download](#)

Applications

Western Blot (Cell lysate)

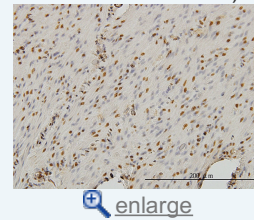
Application Image

Western Blot (Cell lysate)

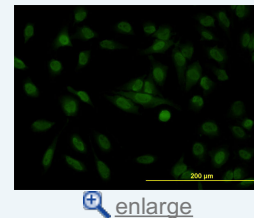


Western Blot (Recombinant protein)

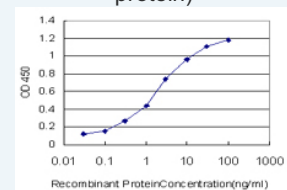
Immunohistochemistry (Formalin/PFA-fixed paraffin-embedded sections)



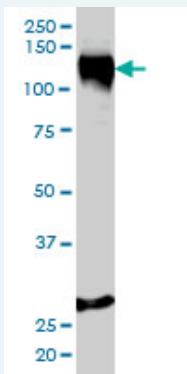
Immunofluorescence



Sandwich ELISA (Recombinant protein)



ELISA



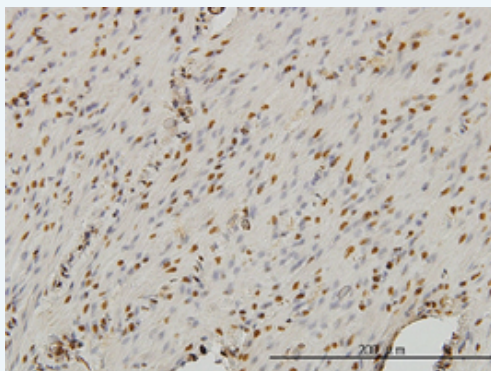
STAG1 monoclonal antibody (M01), clone 2E9 Western Blot analysis of STAG1 expression in HeLa (Cat # L013V1).

[Protocol Download](#)

Western Blot (Recombinant protein)

[Protocol Download](#)

Immunohistochemistry (Formalin/PFA-fixed paraffin-embedded sections)

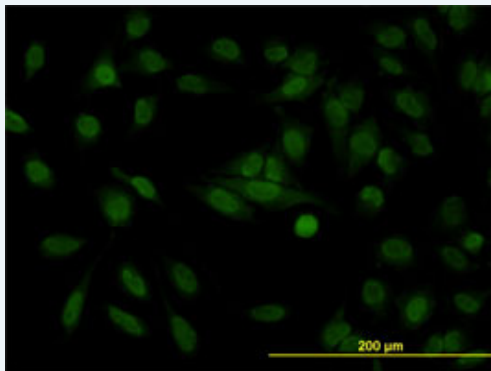


[enlarge this image](#)

Immunoperoxidase of monoclonal antibody to STAG1 on formalin-fixed paraffin-embedded human smooth muscle. [antibody concentration 3 ug/ml]

[Protocol Download](#)

Immunofluorescence

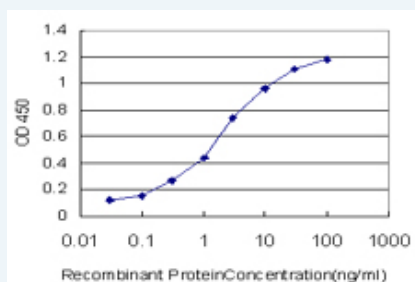


[enlarge this image](#)

Immunofluorescence of monoclonal antibody to STAG1 on HeLa cell. [antibody concentration 10 ug/ml]

[Protocol Download](#)

Sandwich ELISA (Recombinant protein)



Detection limit for recombinant GST tagged STAG1 is approximately 0.03ng/ml as a capture antibody.

ELISA

Gene Information

Entrez GeneID: [10274](#)**GeneBank
Accession#:** [BC064699](#)**Protein
Accession#:** [AAH64699](#)**Gene Name:** STAG1**Gene Alias:** DKFZp781D1416,SA1**Gene
Description:** stromal antigen 1**Omim ID:** [604358](#)**Gene Ontology:** [Hyperlink](#)**Gene Summary:** This gene is a member of the SCC3 family and is expressed in the nucleus. It encodes a component of cohesin, a multisubunit protein complex that provides sister chromatid cohesion along the length of a chromosome from DNA replication through prophase and prometaphase, after which it is dissociated in preparation for segregation during anaphase. [provided by RefSeq]**Other
Designations:** SCC3 homolog 1,nuclear protein stromal antigen 1**Gene Pathway**

[Cell cycle](#)