



SZABO SCANDIC

Part of Europa Biosite

Produktinformation



Forschungsprodukte & Biochemikalien



Zellkultur & Verbrauchsmaterial



Diagnostik & molekulare Diagnostik



Laborgeräte & Service

Weitere Information auf den folgenden Seiten!
See the following pages for more information!



Lieferung & Zahlungsart

siehe unsere [Liefer- und Versandbedingungen](#)

Zuschläge

- Mindermengenzuschlag
- Trockeneiszuschlag
- Gefahrgutzuschlag
- Expressversand

SZABO-SCANDIC HandelsgmbH

Quellenstraße 110, A-1100 Wien

T. +43(0)1 489 3961-0

F. +43(0)1 489 3961-7

mail@szabo-scandic.com

www.szabo-scandic.com

[linkedin.com/company/szaboscandic](https://www.linkedin.com/company/szaboscandic) 

NET1 purified MaxPab mouse polyclonal antibody (B01P) MaxPab®

Catalog # : H00010276-B01P

規格 : [50 ug]

[List All](#)

Specification

Product Description: Mouse polyclonal antibody raised against a full-length human NET1 protein.

Immunogen: NET1 (NP_005854.2, 1 a.a. ~ 542 a.a) full-length human protein.

Sequence:
 MVAHDETGGLLPIKRTIRVLDVNNQSFREQEEPSNKRVRPLARVTSANLI
 SPVRNGAVRRFGQTIQSFTLRGDHRSPASAQKFSSRSTVPTPAKRRSS
 ALWSEMLDITMKESLTTREIRRQEAIYEMSRGEQDLIEDLKLARKAYHDP
 MLKLSIMSEEELTHIFGDLDSYIPLHEDLLTRIGEATKPDGTVEQIGHILVS
 WLPRLNAYRGYCSNQLAAKALLDQKKQDPRVQDFLQRCLESPFSRKLD
 LWSFLDIPRSRLVKYPLLLKEILKHTPKEHPDVQLLEDAILIQGVLSDINLKK
 GESECQYYIDKLEYLDEKQRDPRIEASKVLLCHGELRSKSGHKLYIFLFQ
 DILVLRPVRTRNERHSYQVYRQPIPVQELVLEDLQDGDVVMGGSFARGAF
 SNSEKAKNIFRIRFHDPSPAQSHTLQANDVFHKQQWFNCIRAAIAPFQSA
 GSPPELQGLPELHEECEGNHPSARKLTAQRRASTVSSVTQVEVDENAY
 RCGSGMQMAEDSKSLKTHQTQPGIRRARDKALSGGKRKETLV

Host: Mouse

Reactivity: Human

Quality Control Testing: Antibody reactive against mammalian transfected lysate.

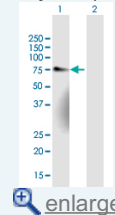
Storage Buffer: In 1x PBS, pH 7.4

Storage Instruction: Store at -20°C or lower. Aliquot to avoid repeated freezing and thawing.

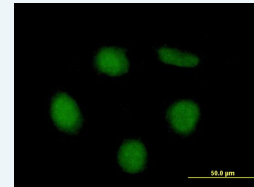
Datasheet:  [Download](#)

Application Image

Western Blot (Transfected lysate)

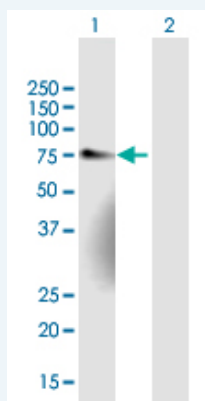


Immunofluorescence



Applications

Western Blot (Transfected lysate)

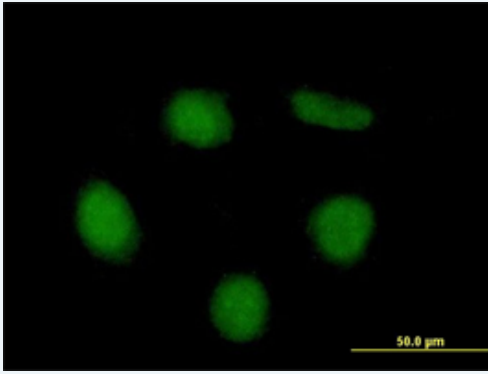


Western Blot analysis of NET1 expression in transfected 293T cell line (H00010276-T01) by NET1 MaxPab polyclonal antibody.

Lane 1: NET1 transfected lysate(59.62 KDa).
 Lane 2: Non-transfected lysate.

 [Protocol Download](#)

Immunofluorescence



 enlarge this image

Immunofluorescence of purified MaxPab antibody to NET1 on HeLa cell. [antibody concentration 10 ug/ml]

 [Protocol Download](#)

Gene Information

Entrez GeneID: [10276](#)

GeneBank Accession#: [NM_005863.2](#)

Protein Accession#: [NP_005854.2](#)

Gene Name: NET1

Gene Alias: ARHGEF8,NET1A

Gene Description: neuroepithelial cell transforming 1

Omim ID: [606450](#)

Gene Ontology: [Hyperlink](#)

Other Designations: OTTHUMP00000019002,OTTHUMP00000019003,Rho guanine nucleotide exchange factor (GEF) 8,guanine nucleotide regulatory protein (oncogene),neuroepithelial cell transforming gene 1,neuroepithelioma transforming gene 1,p65 Net1 proto-oncogene protein,small GTP-b

Related Disease

[Alzheimer Disease](#) [Attention Deficit Disorder with Hyperactivity](#) [Bipolar Disorder](#) [Cognition](#) [Genetic Predisposition to Disease](#) [Neuropsychological Tests](#) [Schizophrenia](#) [Schizophrenia](#) [Schizophrenic Psychology](#)

[服務條款](#) | [隱私權政策](#) | [著作及商標](#) | [網站地圖](#)

©2016 亞諾法生技股份有限公司 Abnova Corporation. 版權所有.