



# SZABO SCANDIC

Part of Europa Biosite

## Produktinformation



Forschungsprodukte & Biochemikalien



Zellkultur & Verbrauchsmaterial



Diagnostik & molekulare Diagnostik



Laborgeräte & Service

Weitere Information auf den folgenden Seiten!  
See the following pages for more information!



### Lieferung & Zahlungsart

siehe unsere [Liefer- und Versandbedingungen](#)

### Zuschläge

- Mindermengenzuschlag
- Trockeneiszuschlag
- Gefahrgutzuschlag
- Expressversand

### SZABO-SCANDIC HandelsgmbH

Quellenstraße 110, A-1100 Wien

T. +43(0)1 489 3961-0

F. +43(0)1 489 3961-7

[mail@szabo-scandic.com](mailto:mail@szabo-scandic.com)

[www.szabo-scandic.com](http://www.szabo-scandic.com)

[linkedin.com/company/szaboscandic](https://www.linkedin.com/company/szaboscandic) 



# NET1 purified MaxPab rabbit polyclonal antibody (D01P) MaxPab®

Catalog # : H00010276-D01P

規格 : [ 100 ug ]

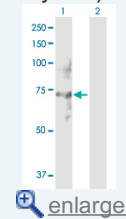
[List All](#)

## Specification

<b>Product Description:</b>	Rabbit polyclonal antibody raised against a full-length human NET1 protein.
<b>Immunogen:</b>	NET1 (NP_005854.2, 1 a.a. ~ 542 a.a) full-length human protein.
<b>Sequence:</b>	MVAHDETGGLLPKIRTVLDVNNQSFREQEEPSNKRVRPLARVTSANLI SPVRNGAVRRFGQTIQSFTLRGDHRSPASAQKFSSRSTVPTPAKRRSS ALWSEMLDITMKESLTTREIRRQEAIYEMSRGEQDLIEDLKLARKAYHDP MLKLSIMSEEELTHIFGDLDSYIPLHEDLLTRIGEATKPDGTVEQIGHILVS WLPRLNAYRGYCSNQLAAKALLDQKKQDPRVQDFLQRCLESPFSRKL LWSFLDIPRSRLVKYPLLLKEILKHTPKEHPDVQLLEDAILIQGVLSINLKK GESECQYYIDKLEYLDEKQRDPRIEASKVLLCHGELRSKSGHKLYIFLFQ DILVLRPVTNRNERHSYQVYRQPIPVQELVLEDLQDGDVVMGGSFGRGAF SNSEKAKNIFRIRFHDPSPAQSHTLQANDVFHKQQWFNCIRAAIAPFQSA GSPPELQGLPELHEECEGNHPSARKLTAQRRASTVSSVTQVEVDENAY RCGSGMQMAEDSKSLKTHQTQPGIRRARDKALSGGKRKETLV
<b>Host:</b>	Rabbit
<b>Reactivity:</b>	Human
<b>Quality Control Testing:</b>	Antibody reactive against mammalian transfected lysate.
<b>Storage Buffer:</b>	In 1x PBS, pH 7.4
<b>Storage Instruction:</b>	Store at -20°C or lower. Aliquot to avoid repeated freezing and thawing.
<b>MSDS:</b>	 <a href="#">Download</a>
<b>Datasheet:</b>	 <a href="#">Download</a>

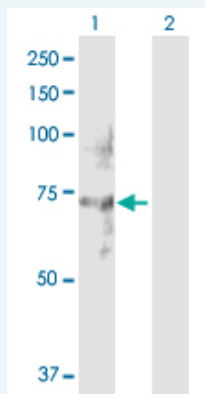
## Application Image

Western Blot (Transfected lysate)



## Applications

### Western Blot (Transfected lysate)



Western Blot analysis of NET1 expression in transfected 293T cell line ([H00010276-T02](#)) by NET1 MaxPab polyclonal antibody.

Lane 1: NET1 transfected lysate(61.90 KDa).

Lane 2: Non-transfected lysate.

 [Protocol Download](#)

### Gene Information

---

**Entrez GeneID:** [10276](#)

**GeneBank  
Accession#:** [NM\\_005863.2](#)

**Protein  
Accession#:** [NP\\_005854.2](#)

**Gene Name:** NET1

**Gene Alias:** ARHGEF8,NET1A

**Gene  
Description:** neuroepithelial cell transforming 1

**Omim ID:** [606450](#)

**Gene Ontology:** [Hyperlink](#)

**Other  
Designations:** OTTHUMP00000019002,OTTHUMP00000019003,Rho guanine nucleotide exchange factor (GEF) 8,guanine nucleotide regulatory protein (oncogene),neuroepithelial cell transforming gene 1,neuroepithelioma transforming gene 1,p65 Net1 proto-oncogene protein,small GTP-b

### Related Disease

---

[Alzheimer Disease](#) [Attention Deficit Disorder with Hyperactivity](#) [Bipolar Disorder](#) [Cognition](#)  
[Genetic Predisposition to Disease](#) [Neuropsychological Tests](#) [Schizophrenia](#) [Schizophrenia](#)  
[Schizophrenic Psychology](#)

[服務條款](#) | [隱私權政策](#) | [著作及商標](#) | [網站地圖](#)

©2016 亞諾法生技股份有限公司 Abnova Corporation. 版權所有.