



SZABO SCANDIC

Part of Europa Biosite

Produktinformation



Forschungsprodukte & Biochemikalien



Zellkultur & Verbrauchsmaterial



Diagnostik & molekulare Diagnostik



Laborgeräte & Service

Weitere Information auf den folgenden Seiten!
See the following pages for more information!



Lieferung & Zahlungsart

siehe unsere [Liefer- und Versandbedingungen](#)

Zuschläge

- Mindermengenzuschlag
- Trockeneiszuschlag
- Gefahrgutzuschlag
- Expressversand

SZABO-SCANDIC HandelsgmbH

Quellenstraße 110, A-1100 Wien

T. +43(0)1 489 3961-0

F. +43(0)1 489 3961-7

mail@szabo-scandic.com

www.szabo-scandic.com

[linkedin.com/company/szaboscandic](https://www.linkedin.com/company/szaboscandic) 

NET1 293T Cell Transient Overexpression Lysate(Denatured)

Catalog # : H00010276-T02

規格 : [100 uL]

List All

Specification

Transfected Cell Line: 293T

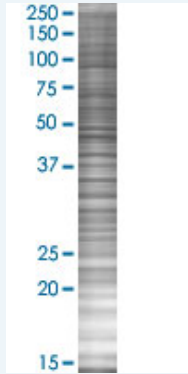
Plasmid: pCMV-NET1 full-length

Host: Human

Theoretical MW (kDa): 61.9

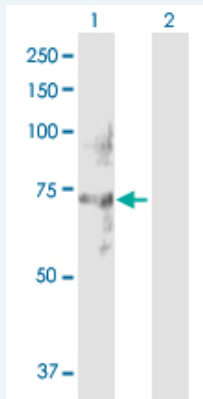
Quality Control Testing: Transient overexpression cell lysate was tested with Anti-NET1 antibody (H00010276-D01P) by Western Blots.

SDS-PAGE Gel



NET1 transfected lysate.

Western Blot



Lane 1: NET1 transfected lysate (61.9 KDa)

Lane 2: Non-transfected lysate.

Storage Buffer: 1X Sample Buffer (50 mM Tris-HCl, 2% SDS, 10% glycerol, 300 mM 2-mercaptoethanol, 0.01% Bromophenol blue)

Storage Instruction: Store at -80°C. Aliquot to avoid repeated freezing and thawing.

MSDS:  [Download](#)

Applications

Application Image

Western Blot

Western Blot

Gene Information

Entrez GeneID: [10276](#)

GeneBank Accession#: [NM_005863.2](#)

Protein Accession#: [NP_005854.2](#)

Gene Name: NET1

Gene Alias: ARHGEF8,NET1A

Gene Description: neuroepithelial cell transforming 1

Omim ID: [606450](#)

Gene Ontology: [Hyperlink](#)

Other Designations: OTTHUMP00000019002,OTTHUMP00000019003,Rho guanine nucleotide exchange factor (GEF) 8,guanine nucleotide regulatory protein (oncogene),neuroepithelial cell transforming gene 1,neuroepithelioma transforming gene 1,p65 Net1 proto-oncogene protein,small GTP-b

Related Disease

[Alzheimer Disease](#) [Attention Deficit Disorder with Hyperactivity](#) [Bipolar Disorder](#) [Cognition](#) [Genetic Predisposition to Disease](#) [Neuropsychological Tests](#) [Schizophrenia](#) [Schizophrenia](#) [Schizophrenic Psychology](#)

[服務條款](#) | [隱私權政策](#) | [著作及商標](#) | [網站地圖](#)

©2016 亞諾法生技股份有限公司 Abnova Corporation. 版權所有.