



SZABO SCANDIC

Part of Europa Biosite

Produktinformation



Forschungsprodukte & Biochemikalien



Zellkultur & Verbrauchsmaterial



Diagnostik & molekulare Diagnostik



Laborgeräte & Service

Weitere Information auf den folgenden Seiten!
See the following pages for more information!



Lieferung & Zahlungsart

siehe unsere [Liefer- und Versandbedingungen](#)

Zuschläge

- Mindermengenzuschlag
- Trockeneiszuschlag
- Gefahrgutzuschlag
- Expressversand

SZABO-SCANDIC HandelsgmbH

Quellenstraße 110, A-1100 Wien

T. +43(0)1 489 3961-0

F. +43(0)1 489 3961-7

mail@szabo-scandic.com

www.szabo-scandic.com

[linkedin.com/company/szaboscandic](https://www.linkedin.com/company/szaboscandic) 

SMNDC1 MaxPab mouse polyclonal antibody (B01) MaxPab®

Catalog # : H00010285-B01

規格 : [50 uL]

[List All](#)

Specification

Product Description: Mouse polyclonal antibody raised against a full-length human SMNDC1 protein.

Immunogen: SMNDC1 (NP_005862, 1 a.a. ~ 238 a.a) full-length human protein.

Sequence:
 MSEDLAKQLASYKAQLQQVEAALSGNGENEDLLKLLKDLQEVIELTKDLL
 STQPSETLASSDSFASTQPTHSWKVGDKCMAVWSEGDGCYEAEIEEIDE
 ENGTAAITFAGYGNAEVTPLLNLKPVEEGRKAKEDSGNKPMSSKEMIAQ
 QREYKKKKALKKAQRRIKELEQEREDQKVWQQFNNRAYSKNKKGGQVKR
 SIFASPESVTGKVGVTGCIADKPMTQYQDTSKYNVRHLMPQ

Host: Mouse

Reactivity: Human, Mouse, Rat

Quality Control Testing: Antibody reactive against mammalian transfected lysate.

Storage Buffer: No additive

Storage Instruction: Store at -20°C or lower. Aliquot to avoid repeated freezing and thawing.

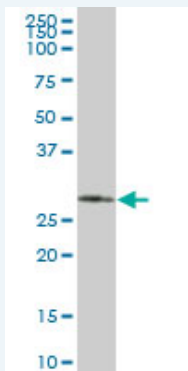
Note: For IHC and IF applications, antibody purification with Protein A will be needed prior to use.

MSDS:  [Download](#)

Datasheet:  [Download](#)

Applications

Western Blot (Tissue lysate)



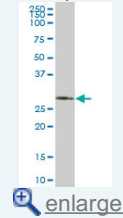
SMNDC1 MaxPab polyclonal antibody. Western Blot analysis of SMNDC1 expression in human placenta.

 [Protocol Download](#)

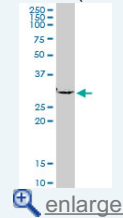
Western Blot (Cell lysate)

Application Image

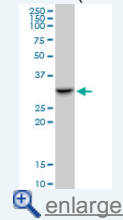
Western Blot (Tissue lysate)



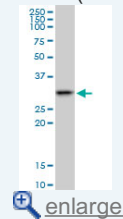
Western Blot (Cell lysate)



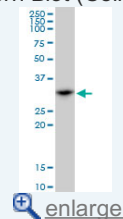
Western Blot (Cell lysate)



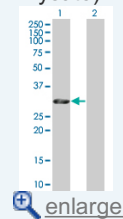
Western Blot (Cell lysate)



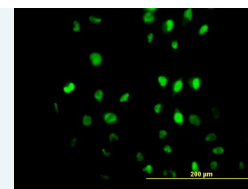
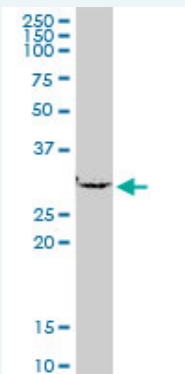
Western Blot (Cell lysate)



Western Blot (Transfected lysate)



Immunofluorescence

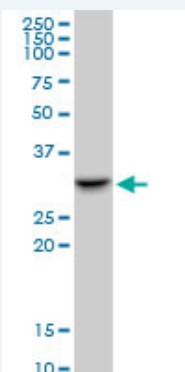


[enlarge](#)

SMNDC1 MaxPab polyclonal antibody. Western Blot analysis of SMNDC1 expression in PC-12.

[Protocol Download](#)

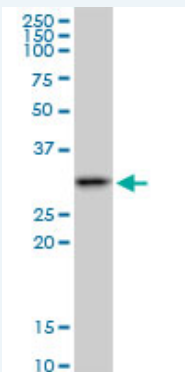
Western Blot (Cell lysate)



SMNDC1 MaxPab polyclonal antibody. Western Blot analysis of SMNDC1 expression in Raw 264.7.

[Protocol Download](#)

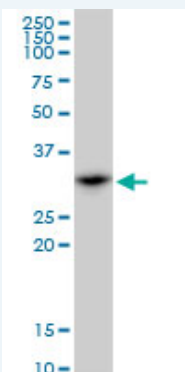
Western Blot (Cell lysate)



SMNDC1 MaxPab polyclonal antibody. Western Blot analysis of SMNDC1 expression in A-431.

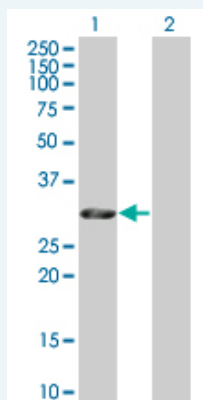
[Protocol Download](#)

Western Blot (Cell lysate)



SMNDC1 MaxPab polyclonal antibody. Western Blot analysis of SMNDC1 expression in NIH/3T3.

Western Blot (Transfected lysate)

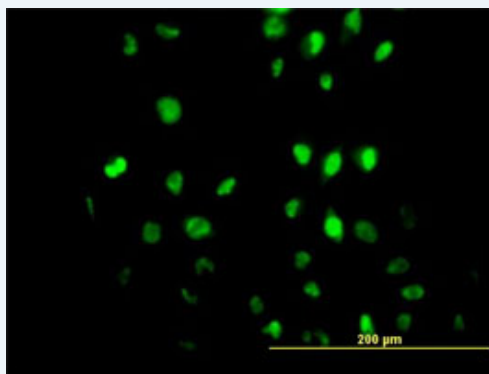



Western Blot analysis of SMNDC1 expression in transfected 293T cell line ([H00010285-T01](#)) by SMNDC1 MaxPab polyclonal antibody.

Lane 1: SMNDC1 transfected lysate(26.18 KDa).

Lane 2: Non-transfected lysate.

Immunofluorescence



 enlarge this image

Immunofluorescence of purified MaxPab antibody to SMNDC1 on HeLa cell. [antibody concentration 10 ug/ml]

Gene Information

Entrez GeneID: [10285](#)

GeneBank [NM_005871](#)

Accession#:

Protein [NP_005862](#)

Accession#:

Gene Name: SMNDC1

Gene Alias: SMNR,SPF30

Gene Description: survival motor neuron domain containing 1

Omim ID: [603519](#)

Gene Ontology: [Hyperlink](#)

Gene Summary: This gene is a paralog of SMN1 gene, which encodes the survival motor neuron protein, mutations in which are cause of autosomal recessive proximal spinal muscular atrophy. The protein encoded by this gene is a nuclear protein that has been identified as a constituent of the

spliceosome complex. This gene is differentially expressed, with abundant levels in skeletal muscle, and may share similar cellular function as the SMN1 gene. [provided by RefSeq]

Other Designations: OTTHUMP00000020474,OTTHUMP00000020475,SMN-related protein,splicing factor 30, survival of motor neuron-related

Related Disease

[Alzheimer Disease Genetic Predisposition to Disease](#)

[服務條款](#) | [隱私權政策](#) | [著作及商標](#) | [網站地圖](#)

©2016 亞諾法生技股份有限公司 Abnova Corporation. 版權所有.