



# SZABO SCANDIC

Part of Europa Biosite

## Produktinformation



Forschungsprodukte & Biochemikalien



Zellkultur & Verbrauchsmaterial



Diagnostik & molekulare Diagnostik



Laborgeräte & Service

Weitere Information auf den folgenden Seiten!  
See the following pages for more information!



### Lieferung & Zahlungsart

siehe unsere [Liefer- und Versandbedingungen](#)

### Zuschläge

- Mindermengenzuschlag
- Trockeneiszuschlag
- Gefahrgutzuschlag
- Expressversand

### SZABO-SCANDIC HandelsgmbH

Quellenstraße 110, A-1100 Wien

T. +43(0)1 489 3961-0

F. +43(0)1 489 3961-7

[mail@szabo-scandic.com](mailto:mail@szabo-scandic.com)

[www.szabo-scandic.com](http://www.szabo-scandic.com)

[linkedin.com/company/szaboscandic](https://www.linkedin.com/company/szaboscandic) 

## BCAS2 monoclonal antibody (M01), clone 1D10

Catalog # : H00010286-M01

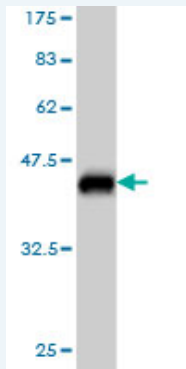
規格 : [ 100 ug ]

[List All](#)

### Specification

<b>Product Description:</b>	Mouse monoclonal antibody raised against a partial recombinant BCAS2.
<b>Immunogen:</b>	BCAS2 (NP_005863, 116 a.a. ~ 225 a.a) partial recombinant protein with GST tag. MW of the GST tag alone is 26 KDa.
<b>Sequence:</b>	HQAVRIENLELMSQHGCAWVKVYNENLVHMIHAQKELQKLRKHIQDLN WQRKNMQLTAGSKLREMESNWWVSLVSKNYEIERIVQLENEYQIKQQHG EANKENIRQDF
<b>Host:</b>	Mouse
<b>Reactivity:</b>	Human
<b>Isotype:</b>	IgG2a Kappa

**Quality Control Testing:** Antibody Reactive Against Recombinant Protein.



Western Blot detection against Immunogen (37.84 KDa) .

**Storage Buffer:** In 1x PBS, pH 7.4

**Storage Instruction:** Store at -20°C or lower. Aliquot to avoid repeated freezing and thawing.

**MSDS:** [Download](#)

**Datasheet:** [Download](#)

### Publication Reference

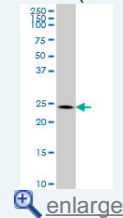
1. [A Quantitative Proteomic Analysis Uncovers the Relevance of CUL3 in Bladder Cancer Aggressiveness.](#)  
Grau L, Luque-Garcia JL, Gonzalez-Peramato P, Theodorescu D, Palou J, Fernandez-Gomez JM, Sanchez-Carbayo M. PLoS One. 2013;8(1):e53328. doi: 10.1371/journal.pone.0053328. Epub 2013 Jan 8.

### Applications

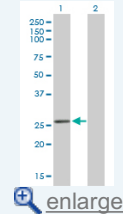
**Western Blot (Cell lysate)**

### Application Image

Western Blot (Cell lysate)

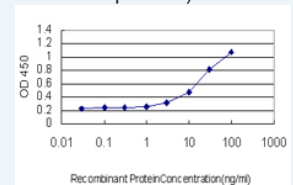


Western Blot (Transfected lysate)



Western Blot (Recombinant protein)

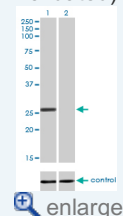
Sandwich ELISA (Recombinant protein)



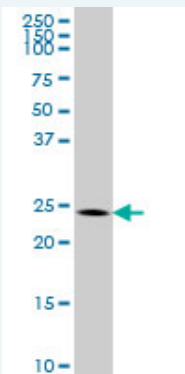
[enlarge](#)

ELISA

RNAi Knockdown (Antibody validated)



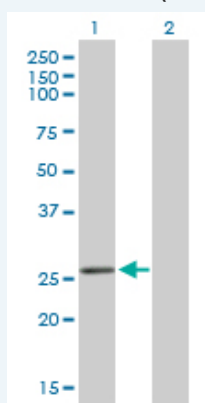
[enlarge](#)



BCAS2 monoclonal antibody (M01), clone 1D10 Western Blot analysis of BCAS2 expression in K-562 ( Cat # L009V1 ).

[Protocol Download](#)

#### Western Blot (Transfected lysate)



Western Blot analysis of BCAS2 expression in transfected 293T cell line by BCAS2 monoclonal antibody (M01), clone 1D10.

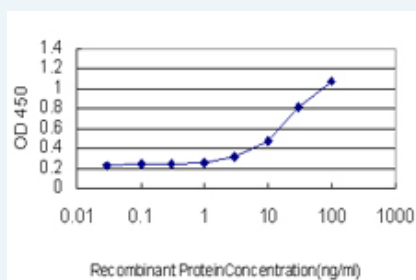
Lane 1: BCAS2 transfected lysate(26.1 KDa).  
Lane 2: Non-transfected lysate.

[Protocol Download](#)

#### Western Blot (Recombinant protein)

[Protocol Download](#)

#### Sandwich ELISA (Recombinant protein)



Detection limit for recombinant GST tagged BCAS2 is approximately 1 ng/ml as a capture antibody.

[Protocol Download](#)

#### ELISA

#### RNAi Knockdown (Antibody validated)



Western blot analysis of BCAS2 over-expressed 293 cell line, cotransfected with BCAS2 Validated Chimera RNAi ( Cat # H00010286-R01V ) (Lane 2) or non-transfected control (Lane 1). Blot probed with BCAS2 monoclonal antibody (M01), clone 1D10 (Cat # H00010286-M01 ). GAPDH ( 36.1 kDa ) used as specificity and loading control.

 [Protocol Download](#)

### Gene Information

**Entrez GeneID:** [10286](#)

**GeneBank** [NM\\_005872](#)

**Accession#:**

**Protein** [NP\\_005863](#)

**Accession#:**

**Gene Name:** BCAS2

**Gene Alias:** DAM1

**Gene Description:** breast carcinoma amplified sequence 2

**Omim ID:** [605783](#)

**Gene Ontology:** [Hyperlink](#)

**Other Designations:** OTTHUMP00000013668,spliceosome associated protein, amplified in breast cancer

[服務條款](#) | [隱私權政策](#) | [著作及商標](#) | [網站地圖](#)

©2016 亞諾法生技股份有限公司 Abnova Corporation. 版權所有.