



SZABO SCANDIC

Part of Europa Biosite

Produktinformation



Forschungsprodukte & Biochemikalien



Zellkultur & Verbrauchsmaterial



Diagnostik & molekulare Diagnostik



Laborgeräte & Service

Weitere Information auf den folgenden Seiten!
See the following pages for more information!



Lieferung & Zahlungsart

siehe unsere [Liefer- und Versandbedingungen](#)

Zuschläge

- Mindermengenzuschlag
- Trockeneiszuschlag
- Gefahrgutzuschlag
- Expressversand

SZABO-SCANDIC HandelsgmbH

Quellenstraße 110, A-1100 Wien

T. +43(0)1 489 3961-0

F. +43(0)1 489 3961-7

mail@szabo-scandic.com

www.szabo-scandic.com

[linkedin.com/company/szaboscandic](https://www.linkedin.com/company/szaboscandic) 



APEG1 MaxPab mouse polyclonal antibody (B01) MaxPab®

Catalog # : H00010290-B01

規格 : [50 uL]

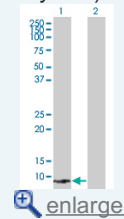
[List All](#)

Specification

Product Description:	Mouse polyclonal antibody raised against a full-length human APEG1 protein.
Immunogen:	APEG1 (AAH06346.1, 1 a.a. ~ 113 a.a) full-length human protein.
Sequence:	MKPSPSQNRSSDTGSKAPPTFKVSLMDQSVREGQDVMISIRVQGEPK PVVSWLRNRQPVPRPDQRRFAEEAEGGLCRLRLAAERGDAGFYTCNAV NEYGARQCEARLEVRGE
Host:	Mouse
Reactivity:	Human
Quality Control Testing:	Antibody reactive against mammalian transfected lysate.
Storage Buffer:	No additive
Storage Instruction:	Store at -20°C or lower. Aliquot to avoid repeated freezing and thawing.
Note:	For IHC and IF applications, antibody purification with Protein A will be needed prior to use.
MSDS:	 Download
Datasheet:	 Download

Application Image

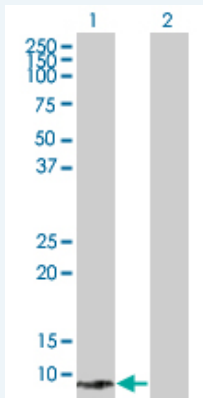
Western Blot (Transfected lysate)



 [enlarge](#)

Applications

Western Blot (Transfected lysate)



Western Blot analysis of SPEG expression in transfected 293T cell line (H00010290-T01) by SPEG MaxPab polyclonal antibody.

Lane 1: APEG1 transfected lysate(12.43 kDa).
Lane 2: Non-transfected lysate.

 [Protocol Download](#)

Gene Information

Entrez GeneID: [10290](#)

**GeneBank
Accession#:** [BC006346.2](#)

**Protein
Accession#:** [AAH06346.1](#)

Gene Name: SPEG

Gene Alias: APEG1,BPEG,KIAA1297,MGC12676,SPEGalpha,SPEGbeta

**Gene
Description:** SPEG complex locus

Gene Ontology: [Hyperlink](#)

Gene Summary: Expression of this gene is thought to serve as a marker for differentiated vascular smooth muscle cells which may have a role in regulating growth and differentiation of this cell type. The encoded protein is highly similar to the corresponding rat and mouse proteins. Multiple alternatively spliced transcript variants have been found for this gene, but the full-length nature of only one variant has been defined. [provided by RefSeq]

**Other
Designations:** OTTHUMP00000064868,aortic preferentially expressed gene 1,aortic preferentially expressed protein 1,nuclear protein, marker for differentiated aortic smooth muscle and down-regulated with vascular injury,striated muscle preferentially expressed protein

Related Disease

[Cardiovascular Diseases](#) [Diabetes Mellitus, Type 2](#) [Edema](#)

服務條款 | 隱私權政策 | 著作及商標 | 網站地圖

©2016 亞諾法生技股份有限公司 Abnova Corporation. 版權所有.