



# SZABO SCANDIC

Part of Europa Biosite

## Produktinformation



Forschungsprodukte & Biochemikalien



Zellkultur & Verbrauchsmaterial



Diagnostik & molekulare Diagnostik



Laborgeräte & Service

Weitere Information auf den folgenden Seiten!  
See the following pages for more information!



### Lieferung & Zahlungsart

siehe unsere [Liefer- und Versandbedingungen](#)

### Zuschläge

- Mindermengenzuschlag
- Trockeneiszuschlag
- Gefahrgutzuschlag
- Expressversand

### SZABO-SCANDIC HandelsgmbH

Quellenstraße 110, A-1100 Wien

T. +43(0)1 489 3961-0

F. +43(0)1 489 3961-7

[mail@szabo-scandic.com](mailto:mail@szabo-scandic.com)

[www.szabo-scandic.com](http://www.szabo-scandic.com)

[linkedin.com/company/szaboscandic](https://www.linkedin.com/company/szaboscandic) 

## SPEG purified MaxPab rabbit polyclonal antibody (D01P) MaxPab®

Catalog # : H00010290-D01P

規格 : [ 100 ug ]

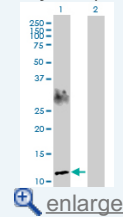
[List All](#)

### Specification

<b>Product Description:</b>	Rabbit polyclonal antibody raised against a full-length human SPEG protein.
<b>Immunogen:</b>	SPEG (AAH06346.1, 1 a.a. ~ 113 a.a) full-length human protein.
<b>Sequence:</b>	MKPSPSQNRSSDTGSKAPPTFKVSLMDQSVREGQDVMISIRVQGEPK PVVSWLRNRQPVPRPDQRRFAEEAEGGLCRLRILAAERGDAGFYTCVAV NEYGARQCEARLEVRGE
<b>Host:</b>	Rabbit
<b>Reactivity:</b>	Human
<b>Quality Control Testing:</b>	Antibody reactive against mammalian transfected lysate.
<b>Storage Buffer:</b>	In 1x PBS, pH 7.4
<b>Storage Instruction:</b>	Store at -20°C or lower. Aliquot to avoid repeated freezing and thawing.
<b>MSDS:</b>	<a href="#">Download</a>
<b>Datasheet:</b>	<a href="#">Download</a>

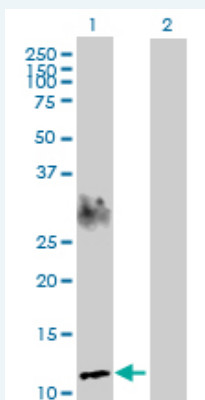
### Application Image

Western Blot (Transfected lysate)



### Applications

#### Western Blot (Transfected lysate)



Western Blot analysis of SPEG expression in transfected 293T cell line ([H00010290-T01](#)) by SPEG MaxPab polyclonal antibody.

Lane 1: SPEG transfected lysate(12.70 KDa).  
Lane 2: Non-transfected lysate.

[Protocol Download](#)

### Gene Information

Entrez GeneID: [10290](#)

**GeneBank** [BC006346.2](#)  
**Accession#:**

**Protein** [AAH06346.1](#)  
**Accession#:**

**Gene Name:** SPEG

**Gene Alias:** APEG1,BPEG,KIAA1297,MGC12676,SPEGalpha,SPEGbeta

**Gene** SPEG complex locus  
**Description:**

**Gene Ontology:** [Hyperlink](#)

**Gene Summary:** Expression of this gene is thought to serve as a marker for differentiated vascular smooth muscle cells which may have a role in regulating growth and differentiation of this cell type. The encoded protein is highly similar to the corresponding rat and mouse proteins. Multiple alternatively spliced transcript variants have been found for this gene, but the full-length nature of only one variant has been defined. [provided by RefSeq]

**Other** OTTHUMP00000064868,aortic preferentially expressed gene 1,aortic  
**Designations:** preferentially expressed protein 1,nuclear protein, marker for differentiated aortic smooth muscle and down-regulated with vascular injury,striated muscle preferentially expressed protein

#### **Related Disease**

[Cardiovascular Diseases](#) [Diabetes Mellitus, Type 2](#) [Edema](#)

[服務條款](#) | [隱私權政策](#) | [著作及商標](#) | [網站地圖](#)

©2016 亞諾法生技股份有限公司 Abnova Corporation. 版權所有.