



# SZABO SCANDIC

Part of Europa Biosite

## Produktinformation



Forschungsprodukte & Biochemikalien



Zellkultur & Verbrauchsmaterial



Diagnostik & molekulare Diagnostik



Laborgeräte & Service

Weitere Information auf den folgenden Seiten!  
See the following pages for more information!



### Lieferung & Zahlungsart

siehe unsere [Liefer- und Versandbedingungen](#)

### Zuschläge

- Mindermengenzuschlag
- Trockeneiszuschlag
- Gefahrgutzuschlag
- Expressversand

### SZABO-SCANDIC HandelsgmbH

Quellenstraße 110, A-1100 Wien

T. +43(0)1 489 3961-0

F. +43(0)1 489 3961-7

[mail@szabo-scandic.com](mailto:mail@szabo-scandic.com)

[www.szabo-scandic.com](http://www.szabo-scandic.com)

[linkedin.com/company/szaboscandic](https://www.linkedin.com/company/szaboscandic) 

## APEG1 monoclonal antibody (M01), clone 2C2-2C7

Catalog # : H00010290-M01

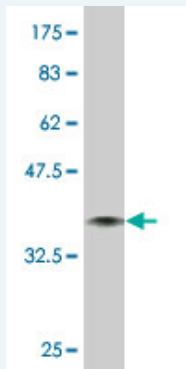
規格 : [ 100 ug ]

[List All](#)

### Specification

<b>Product Description:</b>	Mouse monoclonal antibody raised against a full length recombinant APEG1.
<b>Immunogen:</b>	APEG1 (AAH06346, 1 a.a. ~ 113 a.a) full-length recombinant protein with GST tag. MW of the GST tag alone is 26 KDa.
<b>Sequence:</b>	MKPSPSQNRSSDTGSKAPPTFKVSLMDQSVREGQDVMISIRVQGEPK PVVSWLRNRQPVRPDQRRFAEEAEGGLCRLRILAAERGDAGFYTCKAV NEYGARQCEARLEVRGE
<b>Host:</b>	Mouse
<b>Reactivity:</b>	Human
<b>Isotype:</b>	IgG1 Kappa

**Quality Control Testing:** Antibody Reactive Against Recombinant Protein.



Western Blot detection against Immunogen (38.17 KDa) .

**Storage Buffer:** In 1x PBS, pH 7.4

**Storage Instruction:** Store at -20°C or lower. Aliquot to avoid repeated freezing and thawing.

**MSDS:** [Download](#)

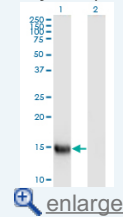
**Datasheet:** [Download](#)

### Applications

Western Blot (Transfected lysate)

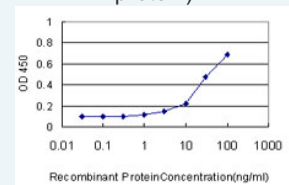
### Application Image

Western Blot (Transfected lysate)



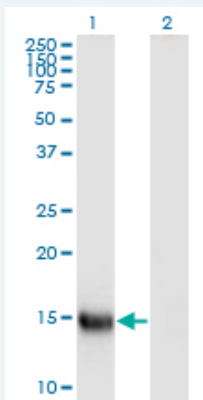
Western Blot (Recombinant protein)

Sandwich ELISA (Recombinant protein)



[enlarge](#)

ELISA



Western Blot analysis of SPEG expression in transfected 293T cell line by APEG1 monoclonal antibody (M01), clone S2.

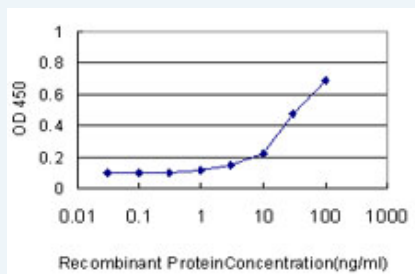
Lane 1: SPEG transfected lysate (Predicted MW: 12.7 KDa).  
Lane 2: Non-transfected lysate.

[Protocol Download](#)

### Western Blot (Recombinant protein)

[Protocol Download](#)

### Sandwich ELISA (Recombinant protein)



Detection limit for recombinant GST tagged APEG1 is approximately 3ng/ml as a capture antibody.

[Protocol Download](#)

### ELISA

### Gene Information

Entrez GeneID: [10290](#)

GeneBank [BC006346](#)  
Accession#:

Protein [AAH06346](#)  
Accession#:

Gene Name: SPEG

Gene Alias: APEG1, BPEG, KIAA1297, MGC12676, SPEGalpha, SPEGbeta

Gene Description: SPEG complex locus

Gene Ontology: [Hyperlink](#)

**Gene Summary:** Expression of this gene is thought to serve as a marker for differentiated vascular smooth muscle cells which may have a role in regulating growth and differentiation of this cell type. The encoded protein is highly similar to the corresponding rat and mouse proteins. Multiple alternatively spliced transcript variants have been found for this gene, but the full-length nature of only one variant has been defined. [provided by RefSeq]

**Other** OTTHUMP0000064868,aortic preferentially expressed gene 1,aortic  
**Designations:** preferentially expressed protein 1,nuclear protein, marker for  
differentiated aortic smooth muscle and down-regulated with vascular  
injury,striated muscle preferentially expressed protein

---

#### **Related Disease**

---

Cardiovascular Diseases Diabetes Mellitus, Type 2 Edema

---

[服務條款](#) | [隱私權政策](#) | [著作及商標](#) | [網站地圖](#)

©2016 亞諾法生技股份有限公司 Abnova Corporation. 版權所有.