



SZABO SCANDIC

Part of Europa Biosite

Produktinformation



Forschungsprodukte & Biochemikalien



Zellkultur & Verbrauchsmaterial



Diagnostik & molekulare Diagnostik



Laborgeräte & Service

Weitere Information auf den folgenden Seiten!
See the following pages for more information!



Lieferung & Zahlungsart

siehe unsere [Liefer- und Versandbedingungen](#)

Zuschläge

- Mindermengenzuschlag
- Trockeneiszuschlag
- Gefahrgutzuschlag
- Expressversand

SZABO-SCANDIC HandelsgmbH

Quellenstraße 110, A-1100 Wien

T. +43(0)1 489 3961-0

F. +43(0)1 489 3961-7

mail@szabo-scandic.com

www.szabo-scandic.com

[linkedin.com/company/szaboscandic](https://www.linkedin.com/company/szaboscandic) 



Anti-AIRE Antibody (Rhodamine)

Product Number: AC21-0210-20

Overview

Host Species: Goat

Clonality: Polyclonal

Purity: Affinity purified using the immunizing peptide. The affinity purified antibody is then conjugated to the fluorescent dye rhodamine.

Conjugate: Rhodamine

Physical Characteristics

Amount: 0.05 mg

Volume: 0.1 ml

Concentration: 0.5 mg/ml

Buffer: 0.5 mg/ml in Tris saline, 0.02% sodium azide, pH7.3 with 0.5% bovine serum albumin.

Storage: Aliquot and store at -20°C. Minimize freezing and thawing.

Specificity

Tested Species Reactivity: Human

Predicted Species Reactivity: Human

Negative Species Reactivity: Unknown

Immunogen: AIRE antibody (Rhodamine) was raised against a synthetic peptide of AIRE. The AIRE peptide immunogen had the following sequence: C-QSMARPAAPFPS AIRE antibody (Rhodamine) is expected to recognize isoforms 1 and 2 (NP_000374.1 and NP_000649.1 respectively).

Blocking Peptide: AIRE peptide, catalog number AC21-0210-P, is the immunizing peptide for this product and can be used as a negative control to block antibody (Rhodamine) binding in a competition or adsorption assay.

Target Information

Accession Number(s): NP_000374.1, NP_000649.1

Gene ID Number(s): 326 (human)

Alternative Names: AIRE; autoimmune regulator (autoimmune polyendocrinopathy candidiasis ectodermal dystrophy); APS1; APSI; PGA1; APECED; AIRE protein; autoimmune regulator (APECED protein); autoimmune regulator (autoimmune polyendocrinopathy candidiasis ectodermal dystrop

Application Details

Tested Applications: ELISA, WB, IHC, ChIP

ELISA: Detection limit dilution 1:32000.

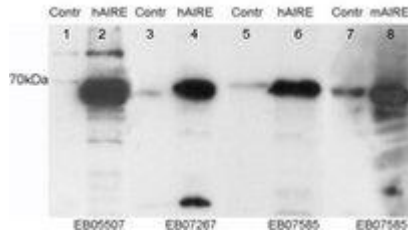
Western Blot: Recommended starting concentration for western blot is 0.01-0.03µg/ml.

Immunohistochemistry: Recommended starting concentration for immunohistochemistry is 2.5µg/ml.

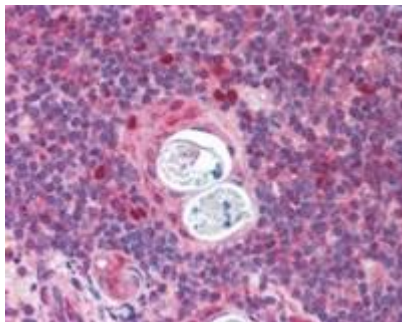
Immunocytochemistry: n/a



Product Images



Western blot using AIRE antibody (unconjugated) (0.01 μ g/ml) on HEK293 cell lysate: untransfected (Lane 1) and transfected with human AIRE (lane 2). Data kindly provided by Prof. Pärt Peterson, University of Tartu, Estonia.



Immunohistochemistry staining using AIRE antibody (unconjugated) (2.5 μ g/ml) to detect endogenous AIRE in paraffin embedded human thymus.