



# SZABO SCANDIC

Part of Europa Biosite

## Produktinformation



Forschungsprodukte & Biochemikalien



Zellkultur & Verbrauchsmaterial



Diagnostik & molekulare Diagnostik



Laborgeräte & Service

Weitere Information auf den folgenden Seiten!  
See the following pages for more information!



### Lieferung & Zahlungsart

siehe unsere [Liefer- und Versandbedingungen](#)

### Zuschläge

- Mindermengenzuschlag
- Trockeneiszuschlag
- Gefahrgutzuschlag
- Expressversand

### SZABO-SCANDIC HandelsgmbH

Quellenstraße 110, A-1100 Wien

T. +43(0)1 489 3961-0

F. +43(0)1 489 3961-7

[mail@szabo-scandic.com](mailto:mail@szabo-scandic.com)

[www.szabo-scandic.com](http://www.szabo-scandic.com)

[linkedin.com/company/szaboscandic](https://www.linkedin.com/company/szaboscandic) 



# Anti-Prostaglandin Dehydrogenase 1 Antibody (PE-Cy5.5)

**Product Number:** AC21-0629-16

## Overview

**Host Species:** Goat

**Clonality:** Polyclonal

**Purity:** Affinity purified using the immunizing peptide. The affinity purified antibody is then conjugated to the PE-Cy5.5 tandem conjugate (phycoerythrin-cyanine 5.5).

**Conjugate:** PE-Cy5.5

## Physical Characteristics

**Amount:** 0.05 mg

**Volume:** 0.1 ml

**Concentration:** 0.5 mg/ml

**Buffer:** 0.5 mg/ml in Tris saline, 0.02% sodium azide, pH7.3 with 0.5% bovine serum albumin.

**Storage:** Aliquot and store at -20°C. Minimize freezing and thawing.

## Specificity

**Tested Species Reactivity:** Human

**Predicted Species Reactivity:** Human

**Negative Species Reactivity:** Unknown

**Immunogen:** Prostaglandin Dehydrogenase 1 antibody (PE-Cy5.5) was raised against a synthetic peptide of Prostaglandin Dehydrogenase 1. The Prostaglandin Dehydrogenase 1 peptide immunogen had the following sequence: C-DYDTTPFQAKTQ

**Blocking Peptide:** Prostaglandin Dehydrogenase 1 peptide, catalog number AC21-0629-P, is the immunizing peptide for this product and can be used as a negative control to block antibody (PE-Cy5.5) binding in a competition or adsorption assay.

## Target Information

**Accession Number(s):** NP\_000851.2

**Gene ID Number(s):** 3248 (human)

**Alternative Names:** HPGD; Prostaglandin dehydrogenase 1; PGDH1; 15-PGDH; hydroxyprostaglandin dehydrogenase 15-(NAD); PGDH; SDR36C1; NAD+-dependent 15-hydroxyprostaglandin dehydrogenase; short chain dehydrogenase/reductase family 36C, member 1

## Application Details

**Tested Applications:** ELISA, WB, IHC

**ELISA:** Detection limit dilution 1:128000.

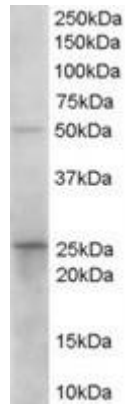
**Western Blot:** Recommended starting concentration for western blot is 0.1-1µg/ml.

**Immunohistochemistry:** Recommended starting concentration for immunohistochemistry is 2-4µg/ml.

**Immunocytochemistry:** n/a



## Product Images



Western blot using prostaglandin dehydrogenase 1 antibody (unconjugated) (0.1 $\mu$ g/ml) to detect endogenous prostaglandin dehydrogenase 1 in human duodenum lysate (35 $\mu$ g total protein in RIPA buffer).