



SZABO SCANDIC

Part of Europa Biosite

Produktinformation



Forschungsprodukte & Biochemikalien



Zellkultur & Verbrauchsmaterial



Diagnostik & molekulare Diagnostik



Laborgeräte & Service

Weitere Information auf den folgenden Seiten!
See the following pages for more information!



Lieferung & Zahlungsart

siehe unsere [Liefer- und Versandbedingungen](#)

Zuschläge

- Mindermengenzuschlag
- Trockeneiszuschlag
- Gefahrgutzuschlag
- Expressversand

SZABO-SCANDIC HandelsgmbH

Quellenstraße 110, A-1100 Wien

T. +43(0)1 489 3961-0

F. +43(0)1 489 3961-7

mail@szabo-scandic.com

www.szabo-scandic.com

[linkedin.com/company/szaboscandic](https://www.linkedin.com/company/szaboscandic) 



Anti-Prostaglandin Dehydrogenase 1 Antibody (PerCP-Cy5.5)

Product Number: AC21-0629-19

Overview

Host Species: Goat

Clonality: Polyclonal

Purity: Affinity purified using the immunizing peptide. The affinity purified antibody is then conjugated to the PerCP-Cy5 tandem conjugate (peridinin-chlorophyll-protein complex-cyanine 5).

Conjugate: PerCP-Cy5.5

Physical Characteristics

Amount: 0.05 mg

Volume: 0.1 ml

Concentration: 0.5 mg/ml

Buffer: 0.5 mg/ml in Tris saline, 0.02% sodium azide, pH7.3 with 0.5% bovine serum albumin.

Storage: Aliquot and store at -20°C. Minimize freezing and thawing.

Specificity

Tested Species Reactivity: Human

Predicted Species Reactivity: Human

Negative Species Reactivity: Unknown

Immunogen: Prostaglandin Dehydrogenase 1 antibody (PerCP-Cy5.5) was raised against a synthetic peptide of Prostaglandin Dehydrogenase 1. The Prostaglandin Dehydrogenase 1 peptide immunogen had the following sequence: C-DYDTTPFQAKTQ

Blocking Peptide: Prostaglandin Dehydrogenase 1 peptide, catalog number AC21-0629-P, is the immunizing peptide for this product and can be used as a negative control to block antibody (PerCP-Cy5.5) binding in a competition or adsorption assay.

Target Information

Accession Number(s): NP_000851.2

Gene ID Number(s): 3248 (human)

Alternative Names: HPGD; Prostaglandin dehydrogenase 1; PGDH1; 15-PGDH; hydroxyprostaglandin dehydrogenase 15-(NAD); PGDH; SDR36C1; NAD⁺-dependent 15-hydroxyprostaglandin dehydrogenase; short chain dehydrogenase/reductase family 36C, member 1

Application Details

Tested Applications: ELISA, WB, IHC

ELISA: Detection limit dilution 1:128000.

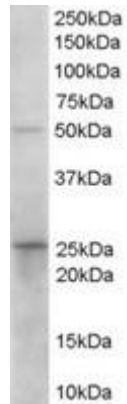
Western Blot: Recommended starting concentration for western blot is 0.1-1µg/ml.

Immunohistochemistry: Recommended starting concentration for immunohistochemistry is 2-4µg/ml.

Immunocytochemistry: n/a



Product Images



Western blot using prostaglandin dehydrogenase 1 antibody (unconjugated) (0.1 μ g/ml) to detect endogenous prostaglandin dehydrogenase 1 in human duodenum lysate (35 μ g total protein in RIPA buffer).