



SZABO SCANDIC

Part of Europa Biosite

Produktinformation



Forschungsprodukte & Biochemikalien



Zellkultur & Verbrauchsmaterial



Diagnostik & molekulare Diagnostik



Laborgeräte & Service

Weitere Information auf den folgenden Seiten!
See the following pages for more information!



Lieferung & Zahlungsart

siehe unsere [Liefer- und Versandbedingungen](#)

Zuschläge

- Mindermengenzuschlag
- Trockeneiszuschlag
- Gefahrgutzuschlag
- Expressversand

SZABO-SCANDIC HandelsgmbH

Quellenstraße 110, A-1100 Wien

T. +43(0)1 489 3961-0

F. +43(0)1 489 3961-7

mail@szabo-scandic.com

www.szabo-scandic.com

[linkedin.com/company/szaboscandic](https://www.linkedin.com/company/szaboscandic) 



Anti-AIRE Antibody (RPE)

Product Number: AC21-0935-21

Overview

Host Species: Goat

Clonality: Polyclonal

Purity: Affinity purified using the immunizing peptide. The affinity purified antibody is then conjugated to R-Phycoerythrin, also known as RPE or R-PE, which is a form of the photosynthesis protein phycoerythrin (PE).

Conjugate: RPE

Physical Characteristics

Amount: 0.05 mg

Volume: 0.1 ml

Concentration: 0.5 mg/ml

Buffer: 0.5 mg/ml in Tris saline, 0.02% sodium azide, pH7.3 with 0.5% bovine serum albumin.

Storage: Aliquot and store at -20°C. Minimize freezing and thawing.

Specificity

Tested Species Reactivity: Human

Predicted Species Reactivity: Human, Rat, Dog, Cow

Negative Species Reactivity: Unknown

Immunogen: AIRE antibody (RPE) was raised against a synthetic peptide of AIRE. The AIRE peptide immunogen had the following sequence: C-KDVDSLQPRKGRKP AIRE antibody (RPE) is expected to recognize isoform 1 (NP_000374.1) only.

Blocking Peptide: AIRE peptide, catalog number AC21-0935-P, is the immunizing peptide for this product and can be used as a negative control to block antibody (RPE) binding in a competition or adsorption assay.

Target Information

Accession Number(s): NP_000374.1

Gene ID Number(s): 326 (human)

Alternative Names: AIRE; autoimmune regulator (autoimmune polyendocrinopathy candidiasis ectodermal dystrophy); AIRE1; APECED; APS1; APSI; PGA1; autoimmune regulator (APECED protein); autoimmune regulator (automimmune polyendocrinopathy candidiasis ectodermal dystrophy); autoimmune regulator AIRE



Application Details

Tested Applications: ELISA, WB, IHC

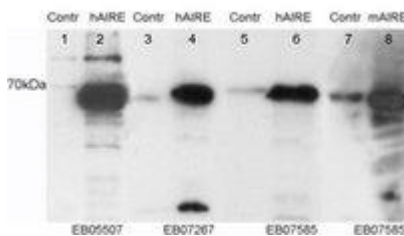
ELISA: Detection limit dilution 1:32000.

Western Blot: Recommended starting concentration for western blot is 0.5-1.0 μ g/ml.

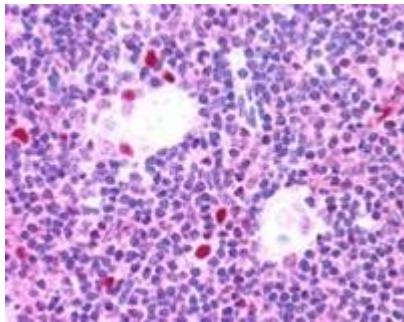
Immunohistochemistry: Recommended starting concentration for immunohistochemistry is 2.5 μ g/ml.

Immunocytochemistry: n/a

Product Images



Western blot using AIRE antibody (unconjugated) (0.05 μ g/ml) to detect endogenous AIRE in HEK293 cell lysate. Untransfected (Lane 3) and transfected with Human AIRE (lane 4). Data kindly provided by Prof. Pärt Peterson, University of Tartu, Estonia.



Immunohistochemistry staining using AIRE antibody (unconjugated) (2.5 μ g/ml) to detect endogenous AIRE in paraffin embedded human thymus.