



SZABO SCANDIC

Part of Europa Biosite

Produktinformation



Forschungsprodukte & Biochemikalien



Zellkultur & Verbrauchsmaterial



Diagnostik & molekulare Diagnostik



Laborgeräte & Service

Weitere Information auf den folgenden Seiten!
See the following pages for more information!



Lieferung & Zahlungsart

siehe unsere [Liefer- und Versandbedingungen](#)

Zuschläge

- Mindermengenzuschlag
- Trockeneiszuschlag
- Gefahrgutzuschlag
- Expressversand

SZABO-SCANDIC HandelsgmbH

Quellenstraße 110, A-1100 Wien

T. +43(0)1 489 3961-0

F. +43(0)1 489 3961-7

mail@szabo-scandic.com

www.szabo-scandic.com

[linkedin.com/company/szaboscandic](https://www.linkedin.com/company/szaboscandic) 



Anti-HOXD10 Antibody (RPE)

Product Number: AC21-1686-21

Overview

Host Species: Goat

Clonality: Polyclonal

Purity: Affinity purified using the immunizing peptide. The affinity purified antibody is then conjugated to R-Phycoerythrin, also known as R-PE or R-PE, which is a form of the photosynthesis protein phycoerythrin (PE).

Conjugate: RPE

Physical Characteristics

Amount: 0.05 mg

Volume: 0.1 ml

Concentration: 0.5 mg/ml

Buffer: 0.5 mg/ml in Tris saline, 0.02% sodium azide, pH7.3 with 0.5% bovine serum albumin.

Storage: Aliquot and store at -20°C. Minimize freezing and thawing.

Specificity

Tested Species Reactivity: Human

Predicted Species Reactivity: Human, Mouse, Rat, Horse, Cow

Negative Species Reactivity: Unknown

Immunogen: HOXD10 antibody (RPE) was raised against a synthetic peptide of HOXD10. The HOXD10 peptide immunogen had the following sequence: PNRSCRIEQPVTQQ

Blocking Peptide: HOXD10 peptide, catalog number AC21-1686-P, is the immunizing peptide for this product and can be used as a negative control to block antibody (RPE) binding in a competition or adsorption assay.

Target Information

Accession Number(s): NP_002139.2

Gene ID Number(s): 3236 (human), 15430 (mouse), 303991 (rat)

Alternative Names: HOXD10; homeobox D10; HOX4; HOX4D; HOX4E; Hox-4.4; homeo box 4D; homeo box D10



Application Details

Tested Applications: ELISA, WB

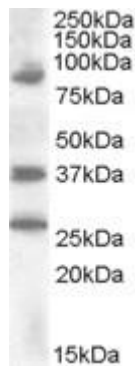
ELISA: Detection limit dilution 1:32000.

Western Blot: Recommended starting concentration for western blot is 0.2-0.6 μ g/ml.

Immunohistochemistry: n/a

Immunocytochemistry: n/a

Product Images



Western blot using HOXD10 antibody (unconjugated) (0.2 μ g/ml) to detect endogenous HOXD10 in human kidney lysate (35 μ g total protein in RIPA buffer).