



# SZABO SCANDIC

Part of Europa Biosite

## Produktinformation



Forschungsprodukte & Biochemikalien



Zellkultur & Verbrauchsmaterial



Diagnostik & molekulare Diagnostik



Laborgeräte & Service

Weitere Information auf den folgenden Seiten!  
See the following pages for more information!



### Lieferung & Zahlungsart

siehe unsere [Liefer- und Versandbedingungen](#)

### Zuschläge

- Mindermengenzuschlag
- Trockeneiszuschlag
- Gefahrgutzuschlag
- Expressversand

### SZABO-SCANDIC HandelsgmbH

Quellenstraße 110, A-1100 Wien

T. +43(0)1 489 3961-0

F. +43(0)1 489 3961-7

[mail@szabo-scandic.com](mailto:mail@szabo-scandic.com)

[www.szabo-scandic.com](http://www.szabo-scandic.com)

[linkedin.com/company/szaboscandic](https://www.linkedin.com/company/szaboscandic) 



# Anti-Haptoglobin beta Antibody (BPE)

**Product Number:** AC21-2602-08

## Overview

**Host Species:** Goat

**Clonality:** Polyclonal

**Purity:** Affinity purified using the immunizing peptide. The affinity purified antibody is then conjugated to B-Phycoerythrin, also known as BPE or B-PE, which is a form of the photosynthesis protein phycoerythrin (PE). BPE has less nonspecific staining than it's

**Conjugate:** BPE

## Physical Characteristics

**Amount:** 0.05 mg

**Volume:** 0.1 ml

**Concentration:** 0.5 mg/ml

**Buffer:** 0.5 mg/ml in Tris saline, 0.02% sodium azide, pH7.3 with 0.5% bovine serum albumin.

**Storage:** Aliquot and store at -20°C. Minimize freezing and thawing.

## Specificity

**Tested Species Reactivity:** Human

**Predicted Species Reactivity:** Human, Dog, Pig

**Negative Species Reactivity:** Unknown

**Immunogen:** Haptoglobin beta antibody (BPE) was raised against a synthetic peptide of Haptoglobin beta. The Haptoglobin beta peptide immunogen had the following sequence: C-STVPEKKTTPKSP Anti-haptoglobin beta antibody (BPE) is expected to recognize both reported isofo

**Blocking Peptide:** Haptoglobin beta peptide, catalog number AC21-2602-P, is the immunizing peptide for this product and can be used as a negative control to block antibody (BPE) binding in a competition or adsorption assay.

## Target Information

**Accession Number(s):** NP\_005134.1, NP\_001119574.1

**Gene ID Number(s):** 3240 (human)

**Alternative Names:** binding peptide; BP; haptoglobin; haptoglobin alpha(1S)-beta; haptoglobin alpha(2FS)-beta; haptoglobin; alpha polypeptide; haptoglobin; beta polypeptide; HP2ALPHA2; HPA1S; MGC111141; HP



## Application Details

**Tested Applications:** ELISA, WB

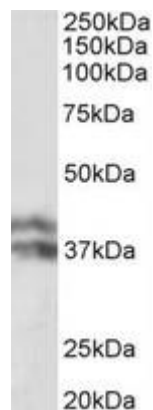
**ELISA:** Detection limit dilution 1:8000.

**Western Blot:** Recommended starting concentration for western blot is 0.1-0.3 $\mu$ g/ml.

**Immunohistochemistry:** n/a

**Immunocytochemistry:** n/a

## Product Images



Western blot using haptoglobin beta antibody (unconjugated) (0.1 $\mu$ g/ml) to detect endogenous haptoglobin beta in human liver lysate (35 $\mu$ g total protein in RIPA buffer).