



SZABO SCANDIC

Part of Europa Biosite

Produktinformation



Forschungsprodukte & Biochemikalien



Zellkultur & Verbrauchsmaterial



Diagnostik & molekulare Diagnostik



Laborgeräte & Service

Weitere Information auf den folgenden Seiten!
See the following pages for more information!



Lieferung & Zahlungsart

siehe unsere [Liefer- und Versandbedingungen](#)

Zuschläge

- Mindermengenzuschlag
- Trockeneiszuschlag
- Gefahrgutzuschlag
- Expressversand

SZABO-SCANDIC HandelsgmbH

Quellenstraße 110, A-1100 Wien

T. +43(0)1 489 3961-0

F. +43(0)1 489 3961-7

mail@szabo-scandic.com

www.szabo-scandic.com

[linkedin.com/company/szaboscandic](https://www.linkedin.com/company/szaboscandic) 



Anti-Haptoglobin beta Antibody (PE-Cy7)

Product Number: AC21-2602-17

Overview

Host Species: Goat

Clonality: Polyclonal

Purity: Affinity purified using the immunizing peptide. The affinity purified antibody is then conjugated to the PE-Cy7 tandem conjugate (phycoerythrin-cyanine 7).

Conjugate: PE-Cy7

Physical Characteristics

Amount: 0.05 mg

Volume: 0.1 ml

Concentration: 0.5 mg/ml

Buffer: 0.5 mg/ml in Tris saline, 0.02% sodium azide, pH7.3 with 0.5% bovine serum albumin.

Storage: Aliquot and store at -20°C. Minimize freezing and thawing.

Specificity

Tested Species Reactivity: Human

Predicted Species Reactivity: Human, Dog, Pig

Negative Species Reactivity: Unknown

Immunogen: Haptoglobin beta antibody (PE-Cy7) was raised against a synthetic peptide of Haptoglobin beta. The Haptoglobin beta peptide immunogen had the following sequence: C-STVPEKKTpkSP Anti-haptoglobin beta antibody (PE-Cy7) is expected to recognize both reported

Blocking Peptide: Haptoglobin beta peptide, catalog number AC21-2602-P, is the immunizing peptide for this product and can be used as a negative control to block antibody (PE-Cy7) binding in a competition or adsorption assay.

Target Information

Accession Number(s): NP_005134.1, NP_001119574.1

Gene ID Number(s): 3240 (human)

Alternative Names: binding peptide; BP; haptoglobin; haptoglobin alpha(1S)-beta; haptoglobin alpha(2FS)-beta; haptoglobin; alpha polypeptide; haptoglobin; beta polypeptide; HP2ALPHA2; HPA1S; MGC111141; HP



Application Details

Tested Applications: ELISA, WB

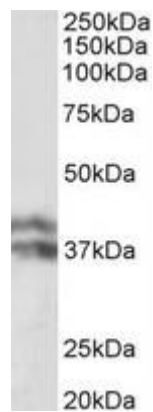
ELISA: Detection limit dilution 1:8000.

Western Blot: Recommended starting concentration for western blot is 0.1-0.3 μ g/ml.

Immunohistochemistry: n/a

Immunocytochemistry: n/a

Product Images



Western blot using haptoglobin beta antibody (unconjugated) (0.1 μ g/ml) to detect endogenous haptoglobin beta in human liver lysate (35 μ g total protein in RIPA buffer).