



# SZABO SCANDIC

Part of Europa Biosite

## Produktinformation



Forschungsprodukte & Biochemikalien



Zellkultur & Verbrauchsmaterial



Diagnostik & molekulare Diagnostik



Laborgeräte & Service

Weitere Information auf den folgenden Seiten!  
See the following pages for more information!



### Lieferung & Zahlungsart

siehe unsere [Liefer- und Versandbedingungen](#)

### Zuschläge

- Mindermengenzuschlag
- Trockeneiszuschlag
- Gefahrgutzuschlag
- Expressversand

### SZABO-SCANDIC HandelsgmbH

Quellenstraße 110, A-1100 Wien

T. +43(0)1 489 3961-0

F. +43(0)1 489 3961-7

[mail@szabo-scandic.com](mailto:mail@szabo-scandic.com)

[www.szabo-scandic.com](http://www.szabo-scandic.com)

[linkedin.com/company/szaboscandic](https://www.linkedin.com/company/szaboscandic) 



# Anti-HoxC6 Antibody (AMCA)

**Product Number:** AC21-2992-01

## Overview

**Host Species:** Goat

**Clonality:** Polyclonal

**Purity:** Affinity purified using the immunizing peptide. The affinity purified antibody is then conjugated to AMCA (Aminomethylcoumarin Acetate) a blue fluorescent dye.

**Conjugate:** AMCA

## Physical Characteristics

**Amount:** 0.05 mg

**Volume:** 0.1 ml

**Concentration:** 0.5 mg/ml

**Buffer:** 0.5 mg/ml in Tris saline, 0.02% sodium azide, pH 7.3 with 0.5% bovine serum albumin.

**Storage:** Aliquot and store at -20°C. Minimize freezing and thawing.

## Specificity

**Tested Species Reactivity:** Human

**Predicted Species Reactivity:** Human, Mouse, Rat, Dog, Pig, Cow

**Negative Species Reactivity:** Unknown

**Immunogen:** HoxC6 antibody (AMCA) was raised against a synthetic peptide of HoxC6. The HoxC6 peptide immunogen had the following sequence: PIVALNSTAYDPVRH

**Blocking Peptide:** HoxC6 peptide, catalog number AC21-2992-P, is the immunizing peptide for this product and can be used as a negative control to block antibody (AMCA) binding in a competition or adsorption assay.

## Target Information

**Accession Number(s):** NP\_004494.1

**Gene ID Number(s):** 3223 (human), 15425 (mouse), 252885 (rat)

**Alternative Names:** CP25; HHO.C8; Homeo box 3C; Homeo box C6; Homeo box C8 protein; Homeobox C6; Homeobox protein CP25; Homeobox protein HHO.C8; Homeobox protein Hox-3C; Homeobox protein Hox-C6; HOX3; HOX3C; Hoxc6; HXC6\_HUMAN



## Application Details

**Tested Applications:** ELISA, WB

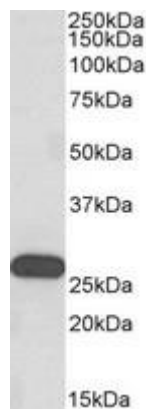
**ELISA:** Detection limit dilution 1:128000

**Western Blot:** Recommended starting concentration for western blot is 0.3-1 $\mu$ g/ml.

**Immunohistochemistry:**

**Immunocytochemistry:**

## Product Images



Western blot using HoxC6 antibody (unconjugated) (0.3 $\mu$ g/ml) to detect endogenous HoxC6 in human frontal cortex lysate (35 $\mu$ g total protein in RIPA buffer).