



SZABO SCANDIC

Part of Europa Biosite

Produktinformation



Forschungsprodukte & Biochemikalien



Zellkultur & Verbrauchsmaterial



Diagnostik & molekulare Diagnostik



Laborgeräte & Service

Weitere Information auf den folgenden Seiten!
See the following pages for more information!



Lieferung & Zahlungsart

siehe unsere [Liefer- und Versandbedingungen](#)

Zuschläge

- Mindermengenzuschlag
- Trockeneiszuschlag
- Gefahrgutzuschlag
- Expressversand

SZABO-SCANDIC HandelsgmbH

Quellenstraße 110, A-1100 Wien

T. +43(0)1 489 3961-0

F. +43(0)1 489 3961-7

mail@szabo-scandic.com

www.szabo-scandic.com

[linkedin.com/company/szaboscandic](https://www.linkedin.com/company/szaboscandic) 



Anti-HoxC6 Antibody (RPE)

Product Number: AC21-2992-21

Overview

Host Species: Goat

Clonality: Polyclonal

Purity: Affinity purified using the immunizing peptide. The affinity purified antibody is then conjugated to R-Phycoerythrin, also known as RPE or R-PE, which is a form of the photosynthesis protein phycoerythrin (PE).

Conjugate: RPE

Physical Characteristics

Amount: 0.05 mg

Volume: 0.1 ml

Concentration: 0.5 mg/ml

Buffer: 0.5 mg/ml in Tris saline, 0.02% sodium azide, pH 7.3 with 0.5% bovine serum albumin.

Storage: Aliquot and store at -20°C. Minimize freezing and thawing.

Specificity

Tested Species Reactivity: Human

Predicted Species Reactivity: Human, Mouse, Rat, Dog, Pig, Cow

Negative Species Reactivity: Unknown

Immunogen: HoxC6 antibody (RPE) was raised against a synthetic peptide of HoxC6. The HoxC6 peptide immunogen had the following sequence: P_NVALN_STAYDP_VRH

Blocking Peptide: HoxC6 peptide, catalog number AC21-2992-P, is the immunizing peptide for this product and can be used as a negative control to block antibody (RPE) binding in a competition or adsorption assay.

Target Information

Accession Number(s): NP_004494.1

Gene ID Number(s): 3223 (human), 15425 (mouse), 252885 (rat)

Alternative Names: CP25; HHO.C8; Homeo box 3C; Homeo box C6; Homeo box C8 protein; Homeobox C6; Homeobox protein CP25; Homeobox protein HHO.C8; Homeobox protein Hox-3C; Homeobox protein Hox-C6; HOX3; HOX3C; Hoxc6; HXC6_HUMAN



Application Details

Tested Applications: ELISA, WB

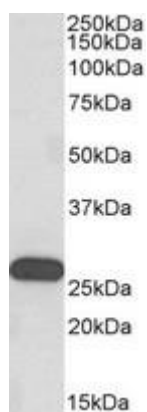
ELISA: Detection limit dilution 1:128000

Western Blot: Recommended starting concentration for western blot is 0.3-1 μ g/ml.

Immunohistochemistry:

Immunocytochemistry:

Product Images



Western blot using HoxC6 antibody (unconjugated) (0.3 μ g/ml) to detect endogenous HoxC6 in human frontal cortex lysate (35 μ g total protein in RIPA buffer).