



SZABO SCANDIC

Part of Europa Biosite

Produktinformation



Forschungsprodukte & Biochemikalien



Zellkultur & Verbrauchsmaterial



Diagnostik & molekulare Diagnostik



Laborgeräte & Service

Weitere Information auf den folgenden Seiten!
See the following pages for more information!



Lieferung & Zahlungsart

siehe unsere [Liefer- und Versandbedingungen](#)

Zuschläge

- Mindermengenzuschlag
- Trockeneiszuschlag
- Gefahrgutzuschlag
- Expressversand

SZABO-SCANDIC HandelsgmbH

Quellenstraße 110, A-1100 Wien

T. +43(0)1 489 3961-0

F. +43(0)1 489 3961-7

mail@szabo-scandic.com

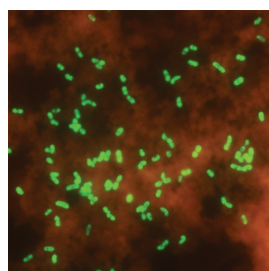
www.szabo-scandic.com

[linkedin.com/company/szaboscandic](https://www.linkedin.com/company/szaboscandic) 

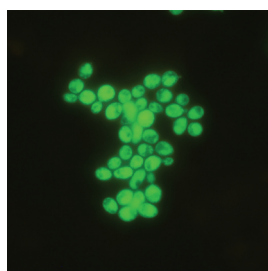
ASR PNA Probes

AdvanDx's Analyte Specific Reagent (ASR) program consists of PNA probes specific for ribosomal RNA (rRNA) sequences found in bacteria and fungi. All probes are manufactured under cGMP to ensure optimal consistency and quality.*

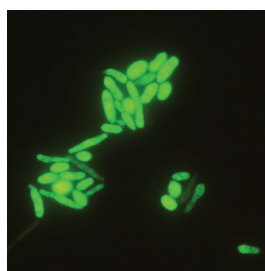
ASR Probes	Cat. No.	Description
<i>Acinetobacter</i> PNA	CP0050	1.5 mL (50 drops) fluorescein-labeled PNA probes targeting rRNA in all <i>Acinetobacter</i> species.
<i>C. dubliniensis</i> PNA	CP0051	1.5 mL (50 drops) fluorescein-labeled PNA probes targeting rRNA in <i>Candida dubliniensis</i> .
<i>C. parapsilosis</i> PNA	CP0052	1.5 mL (50 drops) fluorescein-labeled PNA probes targeting rRNA in <i>Candida parapsilosis</i> .
<i>K. pneumoniae</i> PNA	CP0053	1.5 mL (50 drops) fluorescein-labeled PNA probes targeting rRNA in <i>Klebsiella pneumoniae</i> .
BacUni PNA	CP0054	1.5 mL (50 drops) fluorescein-labeled PNA probes targeting a universal rRNA sequence in bacteria.



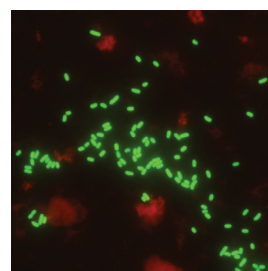
Acinetobacter PNA



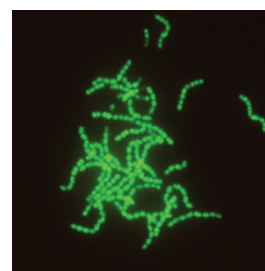
C. dubliniensis PNA



C. parapsilosis PNA



K. pneumoniae PNA



BacUni PNA

*Analyte and performance characteristics are not established. ASRs can only be sold to clinical laboratories regulated under the CLIA of 1988, as qualified to perform high complexity testing under 42 CFR part 493 or under VHA directive 1106.