



SZABO SCANDIC

Part of Europa Biosite

Produktinformation



Forschungsprodukte & Biochemikalien



Zellkultur & Verbrauchsmaterial



Diagnostik & molekulare Diagnostik



Laborgeräte & Service

Weitere Information auf den folgenden Seiten!
See the following pages for more information!



Lieferung & Zahlungsart

siehe unsere [Liefer- und Versandbedingungen](#)

Zuschläge

- Mindermengenzuschlag
- Trockeneiszuschlag
- Gefahrgutzuschlag
- Expressversand

SZABO-SCANDIC HandelsgmbH

Quellenstraße 110, A-1100 Wien

T. +43(0)1 489 3961-0

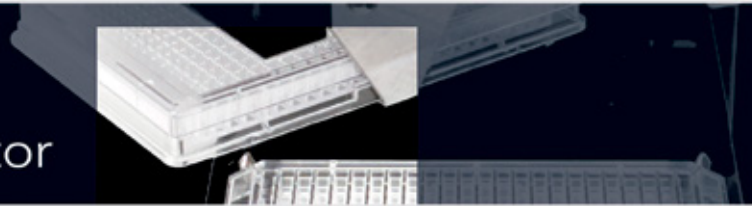
F. +43(0)1 489 3961-7

mail@szabo-scandic.com

www.szabo-scandic.com

[linkedin.com/company/szaboscandic](https://www.linkedin.com/company/szaboscandic) 

BioSpa™ 8 Automated Incubator



BioSpa 8 is an automated incubator that links BioTek readers or imagers together with washers and dispensers for full workflow automation of up to 8 microplates. Real time control and continuous temperature, CO₂/O₂ and humidity level monitoring, along with lid handling ensure an ideal environment for cell cultures during all experiment stages, with minimal manual intervention. Link one washer or dispenser, one plate reader or imager, or one of each for start-to-finish workflow automation. BioSpa's software features customizable text or email notifications and alerts, eliminating the need for onsite monitoring.

The software's session timelines and environmental reports allow quick scrutiny of the process and system status. BioSpa 8 automates assay workflows by repeated manipulation and storage of microplates containing live cells or temperature sensitive reagents. BioSpa's OnDemand mode allows multi-experiment processing, with labware addition and removal at any time during the process. BioSpa 8 is ideal for efficient automation of short or long-term cell-based assays and other temperature, gas and humidity sensitive processes.



BioSpa 8 Automated Incubator



BioSpa 8 holds up to 8 microplates and other labware.

Typical Applications:

- Automated live cell assays (liquid handling and/or imaging)
- ELISA automation (wash, dispense, read), all steps except for initial sample dispensing
- Automated kinetic measurements on multiple microplates in parallel
- Automate processes that run over hours, days or weeks

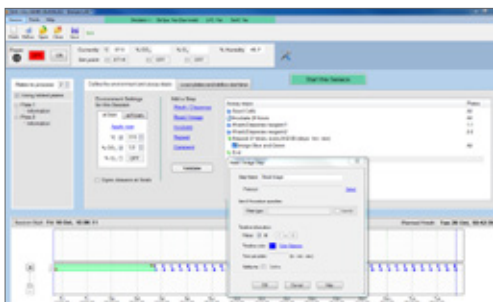
Features:

- Unattended workflow automation integrating sample prep with detection/imaging for up to 8 plates
- Real time temperature and CO₂/O₂ control, with humidity monitoring
- Continuous recording of environment conditions and customized notifications provide detailed assay monitoring and analysis
- Compact system fits in biosafety cabinet, providing the ultimate cell assay protection
- Uncomplicated software and simple integration for rapid implementation with a short learning curve
- OnDemand mode allows for multi-user flexibility and on-the-fly labware addition/removal

Configurations:

- BIOSPA** Automated incubator with 8-plate capacity, incubation to 45 °C, with control and monitoring. Includes BioSpa software and one alignment kit.
- BIOSPAG** Automated incubator with 8-plate capacity, incubation to 45 °C and CO₂/O₂ control and monitoring, water pan and humidity monitoring. Includes BioSpa software and one alignment kit.

See Web site or price list for complete configuration listings and descriptions.



Defining assay steps in BioSpa software.

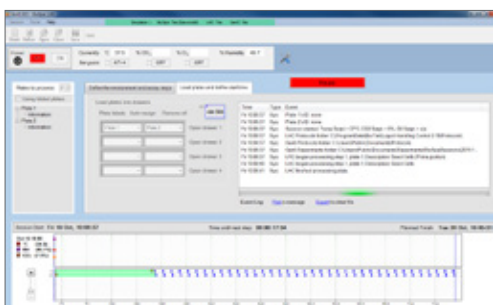


Plate assignment, session details and timeline.



BioSpa 8 integrates with BioTek's microplate washers, dispensers, imagers, and readers for a fully automated assay workstation.

Specifications:

General

- Microplate types:** 6- to 1536-well standard height microplates, with or without lids.
- Other labware supported:** Cell culture dishes (60 mm and 35 mm), T25 flasks
- Plate capacity:** Up to 8 microplates (or other labware)
- Air filter:** User-replaceable HEPA filter
- Plate handler:** Robotic arm moves plate to and from BioSpa 8 and connected instrument; handles de-lidding and re-lidding of plates.
- Compatible BioTek instruments:** Cytation 5, Cytation 1, Synergy Neo2, Synergy H1, Epoch 2 EL406, 405 TS, 405 LS, MultiFlo FX, MultiFlo
- Interfacing capacity:** 1 or 2 devices: Reader/imager only, washer/dispenser only, or one of each

Temperature Control

- Range:** To 45 °C
- Control resolution:** 0.1 °C
- Uniformity:** ±0.5 °C at 37 °C

CO₂ Control

- Range:** 0 – 20%
- Control resolution:** ±0.1%
- Stability:** ±0.2 at 5% CO₂

O₂ Control

- Range:** 1 – 19%
- Control resolution:** ±0.1%
- Stability:** ±0.2 at 1% O₂

Humidity

- rH:** 80 to 95% (lidded plates and 5% CO₂)
- Source:** Removable water pan
- Water level sensor:** Low water level alert

Software

- BioSpa Automated Incubator Software:** Provides programming interface for BioTek detection and liquid handling devices
- Allows user notification (text or email) of events and/or errors in the system
- Provides control, monitoring and logging of:
- CO₂/O₂
 - Temperature
- Provides humidity level monitoring and logging
- Allows long-term uninterrupted runs up to 2 weeks

Physical Characteristics

- Dimensions:** With standard base pan extension: 29.5" L x 22" W x 19" H (75 cm x 55 cm x 49 cm)
With fluidics base pan extension: 39" L x 22" W x 19" H (99 cm x 55 cm x 49 cm)
- Weight:** <85 lbs (39 kg) (without shipping components and an empty water pan)

Regulatory

CE and TUV marked, RoHS compliant.



BioTek Instruments, Inc.
Highland Park, P.O. Box 998
Winooski, Vermont 05404-0998, USA

Phone: 802-655-4040 • Toll-Free: 888-451-5171
Outside the USA: 802-655-4740
www.biotek.com